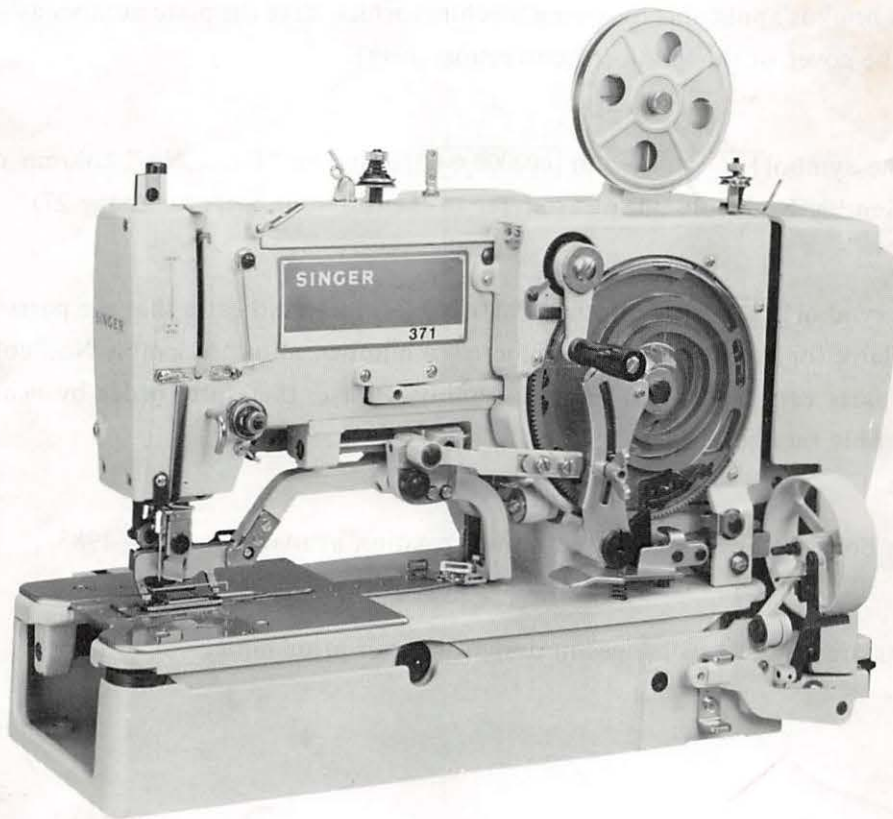


PARTS BOOK

FOR

SINGER 371U



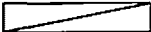
P371402



High Speed Buttonhole Sewing Machine
High Speed Gimp Buttonhole Sewing Machine

THE SINGER COMPANY

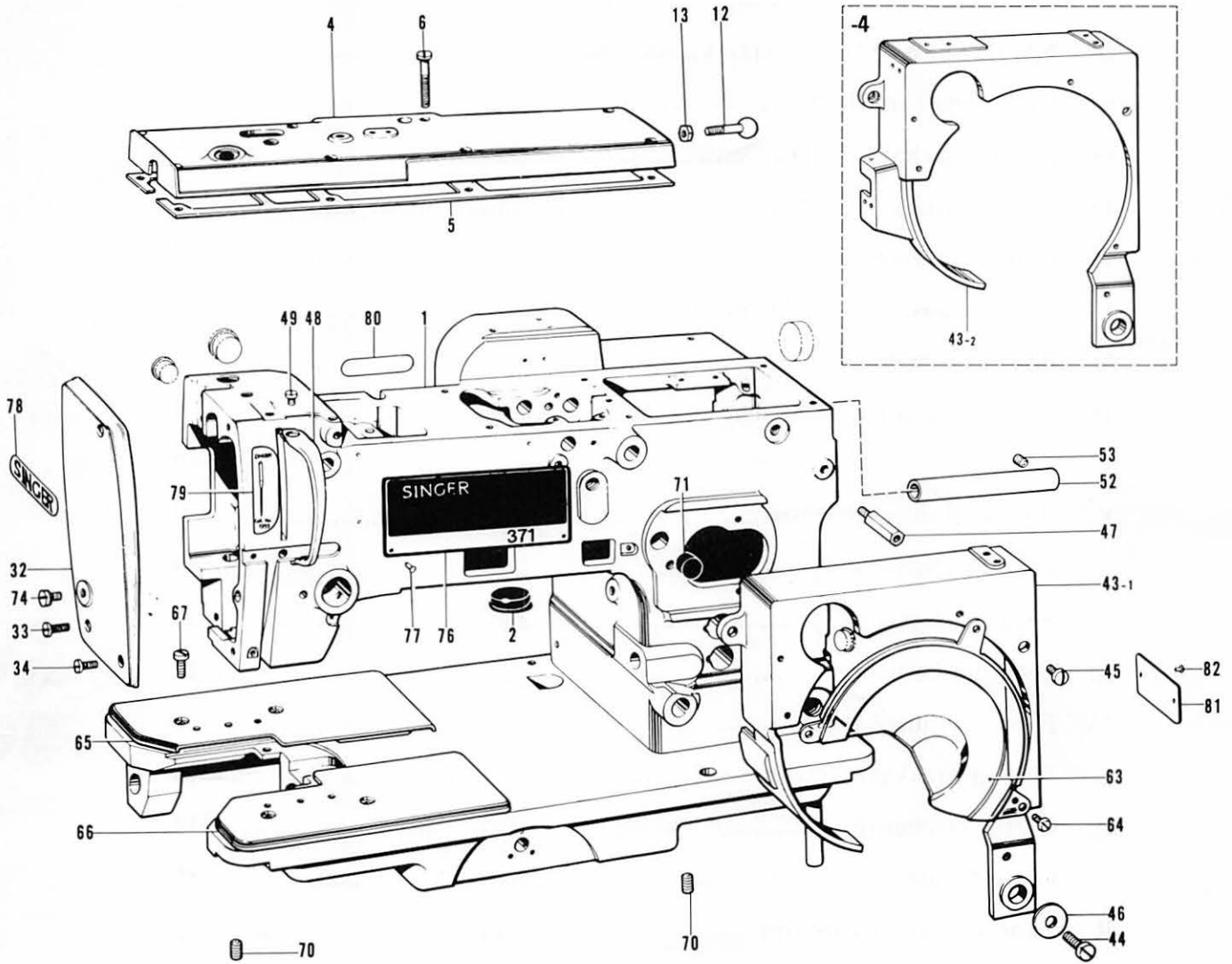
Notes for using this parts book

1. This book is applicable to sewing machines which have the plate number as shown on the cover of this book (or correction sheet).
2. If the symbol  or  is in the "Parts No." column or the "Assembly No." column, please refer to the different parts list (page 27).
3. The symbol  in the "Parts No." column indicates that the parts is not available for supply. If, however, there is a number in the "Assembly No." column, the parts can be ordered as an assembly. Please, therefore, order by using the assembly number.
4. This book was prepared based on information available in May, 1983.
5. Parts are subject to changes in design without prior notice.

CONTENTS

A. Machine body (1)	1
A. Machine body (2)	2
B. Needle bar and thread take-up mechanism	3
C. Upper shaft mechanism	4
D. Zigzag mechanism (1)	5
D. Zigzag mechanism (2)	6
E. Clutch mechanism	7
F. Power transmitter mechanism	8
G. Belt shift mechanism	8
H. Emergency stop mechanism	9
J. Tension pulley mechanism	9
K. Presser foot mechanism	10
L. Feed mechanism (1)	10
L. Feed mechanism (2)	11
L. Feed mechanism (3)	12
M. Feed cam mechanism	13
N. Thread breakage detector	13
P. Cutter mechanism	14
Q. Gimp Guide mechanism	15
R. Tape winder mechanism	16
S. Vertical shaft and Lower shaft mechanism	17
T. Lubrication (1)	18
T. Lubrication (2)	19
U. Threading mechanism (1)	20
U. Threading mechanism (2)	21
V. Bobbin winder	21
W. Upper Thread Trimmer mechanism (1)	22
W. Upper Thread Trimmer mechanism (2)	23
X. Lower Thread Trimmer mechanism	24
Z. Accessories mechanism (1)	25
Z. Accessories mechanism (2)	26
DIFFERENT PARTS LIST	27
GAUGE PARTS LIST	35
MOTOR PULLEY AND BELTS	37
INDEX	38

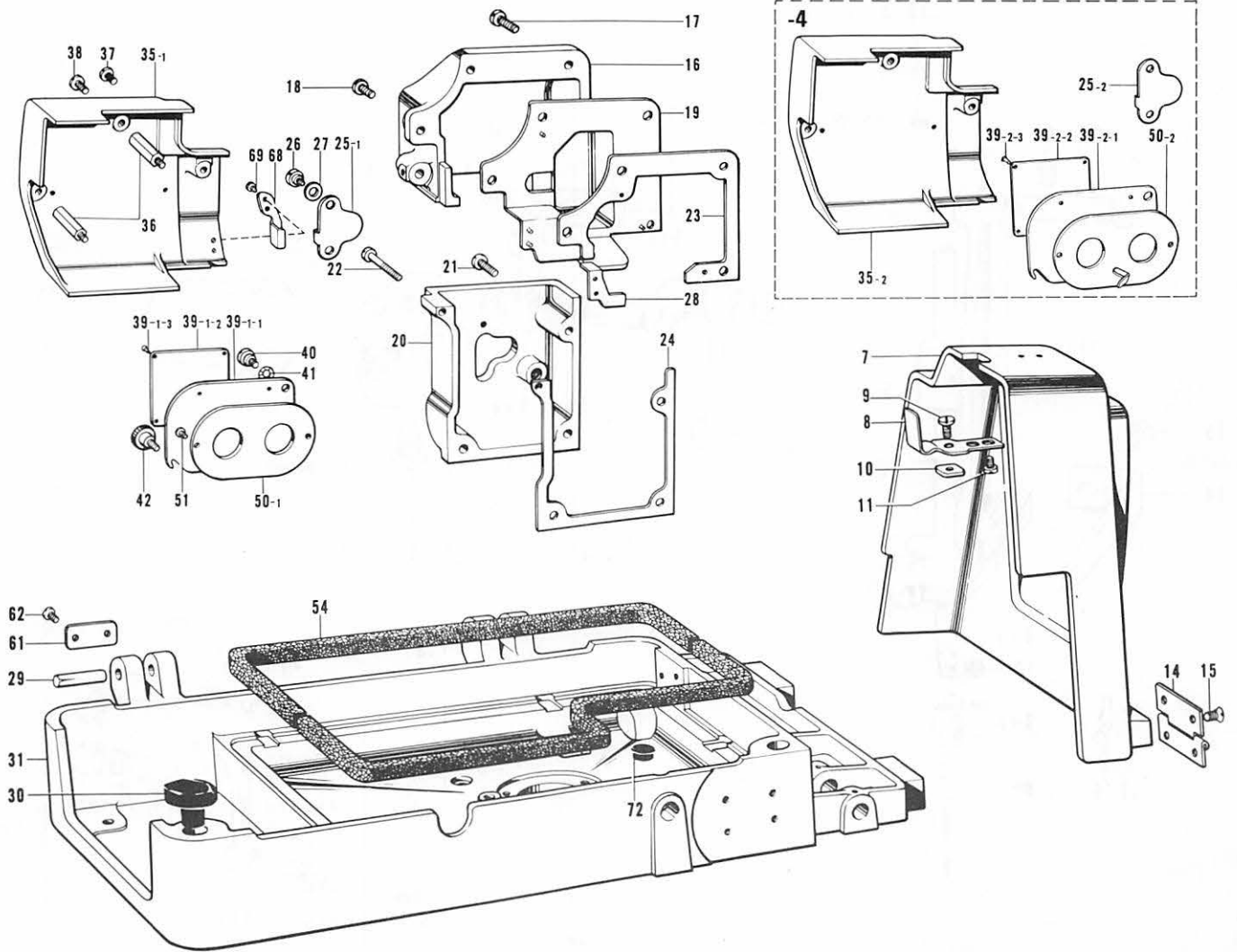
A. Machine body (1)



Ref. No.	Name of Parts	Q'ty	Parts No.	Assembly No.	Ref. No.	Name of Parts	Q'ty	Parts No.	Assembly No.
1	Arm Bed	1			52	Connecting Pipe	1	141718-001	
2	Oil Cap	2	142743-000		53	Screw 5.95 x 6	1	014760-622	
4	Top Cover	1	141243-002		63	Cam Cover (Upper)	1	143445-001	
5	Packing	1	141244-000		64	Screw 3.57 x 5		001670-512	
6	Screw 4.37	8	102424-004		65	Bed Cover (Left)	1	143742-001	
12	Belt Cover Stopper	1	141248-001		66	Bed Cover (Right)	1	143741-001	
13	Nut 4.37	1	105234-003		67	Screw 4.37	4	107407-003	
32	Face Plate	1	150568-002		70	Screw 5.95 x 7	2	013760-712	
33	Screw 4.37 x 14	2	009681-412		71	Oil Cap	1	145342-001	
34	Screw 4.37 x 10	1	009681-012		74	Screw 4.76 x 6	1	009710-614	
43-1	Cam Cover	1	141266-002		76	Name Plate	1		
43-2	Cam Cover	1	145339-002		77	Pin	4		
44	Screw 4.37 x 12	2	009681-212		78	Name Plate Singer	1		
45	Screw 4.37	1	100644-005		79	Label	1		
46	Washer	1	116662-003		80	Parts Book Number Plate	1		
47	Bolt	1	141267-001		81	Model Plate	1		
48	Thread Take-up Cover	1	141268-002		82	Pin	2		
49	Screw 3.57 x 5	1	009670-512						

[NOTE! PREFIX ALL NUMBERS BY 'BR'.]
 EXAMPLE BR009681-0-14

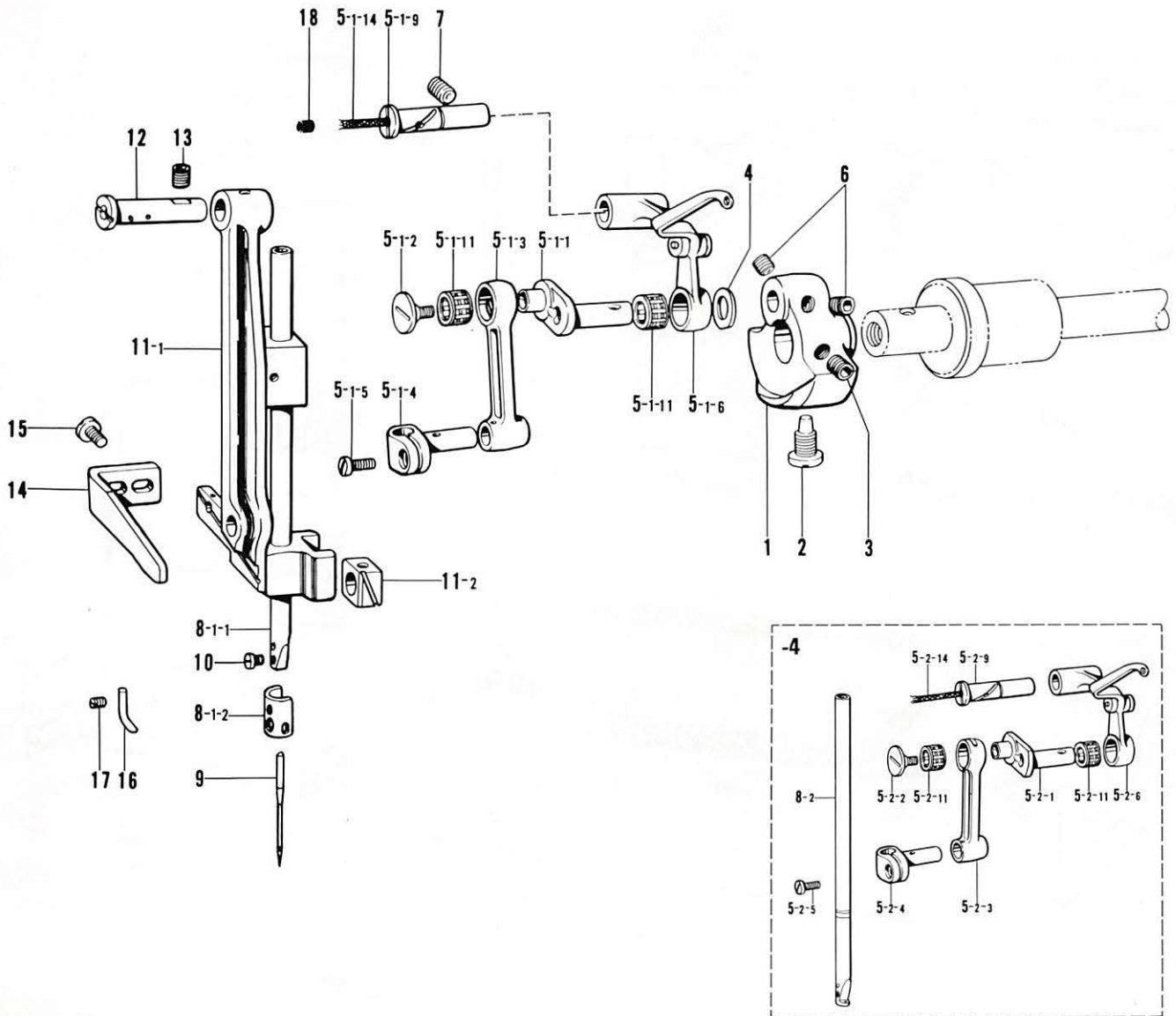
A. Machine body (2)



Ref. No.	Name of Parts	Q'ty	Parts No.	Assembly No.	Ref. No.	Name of Parts	Q'ty	Parts No.	Assembly No.
7	Belt Cover	1	141245-002		35-1	Side Cover	1	154473-001	
8	Belt Cover Spring Plate	1	141246-001		35-2	Side Cover	1	154474-001	
9	Screw 4.37 x 4.5	2	009689-412		36	Bolt	3	141262-001	
10	Belt Cover Stopper	1	141247-001		37	Screw 4.37 x 12	2	009681-212	
11	Screw 4.37 x 4.5	1	009689-412		38	Screw 4.37 x 20	1	009682-012	
14	Belt Cover Hinge	2	107372-001		39-1-1	Gear Case Cover	1	141264-002	A-39-1 Gear Case Cap Assembly 154485-001
15	Screw 4.76	8	107231-002		39-1-2	Diagram for Numbers of Stitch	1	141265-001	
16	Sub Shaft Cover Upper	1	141249-002		39-1-3	Pin 1.7 x 2	4	041170-204	
17	Screw 5.95 x 20	3	009762-012		39-2-1	Gear Case Cover	1	141264-002	A-39-2 Gear Case Cap Assembly 154486-001
18	Screw 5.95 x 14	1	009761-412		39-2-2	Diagram for Numbers of Stitch	1	147203-001	
19	Sub Shaft Cover	1	144946-000		39-2-3	Pin 1.7 x 2	4	041170-204	
20	Sub Shaft Cover Lower	1	143984-002		40	Screw 4.76	1	107321-003	
21	Screw 5.95 x 20	3	009762-012		41	Washer	1	107017-002	
22	Screw 4.37	1	102023-005		42	Screw 3.57	1	129986-001	
23	Packing (Large)	1	141252-000		50-1	Gear Separation Plate	1	141269-001	
24	Packing	1	141254-000		50-2	Gear Separation Plate	1	145345-001	
25-1	Oil Gauge Window	1	143985-001		51	Screw 3.57 x 6	2	009670-612	
25-2	Oil Gauge Window	1	145343-001		54	Cork Packing	2	114747-001	
26	Screw 4.76	1	107321-003		61	Head Hook Plate	2	142312-001	
27	Washer	1	107017-002		62	Screw 4.37 x 7	4	009680-712	
28	Packing (Small)	1	142269-000		68	Cover	1	143911-001	
29	Pin	2	141257-001		69	Screw 4.37 x 6	2	009680-612	
30	Bed Cushion	2	141258-001		72	Oil Cap	1	117934-001	
31	Bed Base	1	141259-002						

[NOTE! PREFIX ALL NUMBERS BY 'BR'.]
 [EXAMPLE BR009681-0-14]

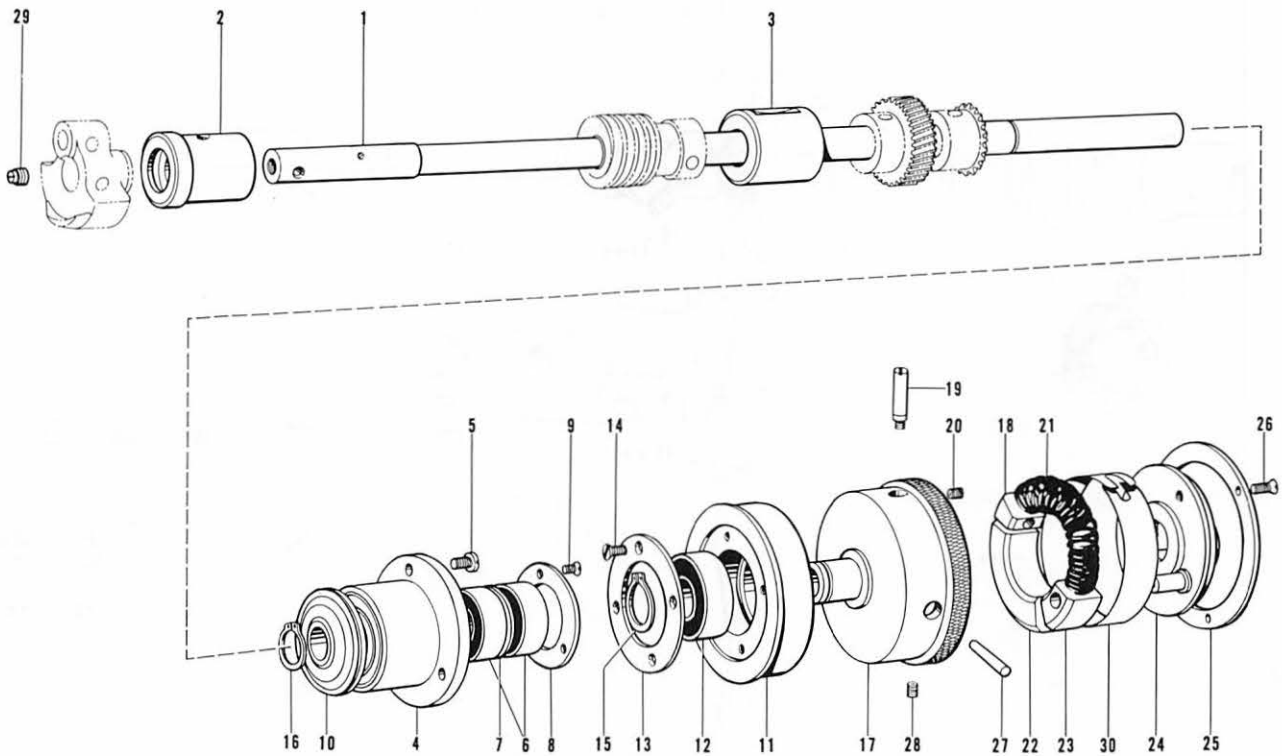
B. Needle bar and thread take-up mechanism



Ref. No.	Name of Parts	Q'ty	Parts No.	Assembly No.	Ref. No.	Name of Parts	Q'ty	Parts No.	Assembly No.
1	Counter Weight	1	141290-000		5-2-11	Needle Roller Bearing	2		B-5-2
2	Screw 7.14	1	100250-001		5-2-14	Wick	1	140430-001	145719-101
3	Screw 6.35 x 6	1	014770-622		6	Screw 6.35 x 6	2	014770-622	
4	Washer	1	110367-001		7	Screw 6.35 x 6	1	014770-622	
5-1-1	Needle Bar Crank	1		B-5-1 Thread Take-up Lever Assembly 147650-101	8-1-1	Needle Bar	1	148052-001	B-8-1 Needle Bar Assembly 141293-101
5-1-2	Screw 3.57 L	1	145465-001		8-1-2	Needle Bar Thread Guide	1	148053-001	
5-1-3	Needle Bar Crank Rod	1	118829-001		8-2	Needle Bar	1	146075-001	
5-1-4	Needle Bar Clamp	1	111237-001		9	Needle Cat. No. 1955-01	1	154483-0	
5-1-5	Screw 3.57	1	140004-001		10	Screw 3.18	1	140553-102	
5-1-6	Thread Take-up Lever	1			11-1	Needle Bar Support	1		B-11 Needle Bar Support Assembly 142736-001
5-1-9	Stud	1	111468-001		11-2	Slide Block	1		
5-1-11	Needle Roller Bearing	2			12	Stud	1	141295-001	
5-1-14	Wick	1	140430-001		13	Screw 63.5 x 6	1	014770-622	
5-2-1	Needle Bar Crank	1			14	Needle Bar Support Guide	1	141296-001	
5-2-2	Screw 3.57 L	1	145465-001	15	Screw 4.37	2	107407-003		
5-2-3	Needle Bar Crank Rod	1	118829-001	16	Needle Bar Position Pointer	1	118682-001		
5-2-4	Needle Bar Clamp	1	111237-001	17	Screw 3.18	1	103978-002		
5-2-5	Screw 3.57	1	140004-001	18	Oil Cap	1	140326-001		
5-2-6	Thread Take-up Lever	1							
5-2-9	Stud	1	111468-001						

[NOTE! PREFIX ALL NUMBERS BY 'BR'.]
 [EXAMPLE BR009681-0-14]

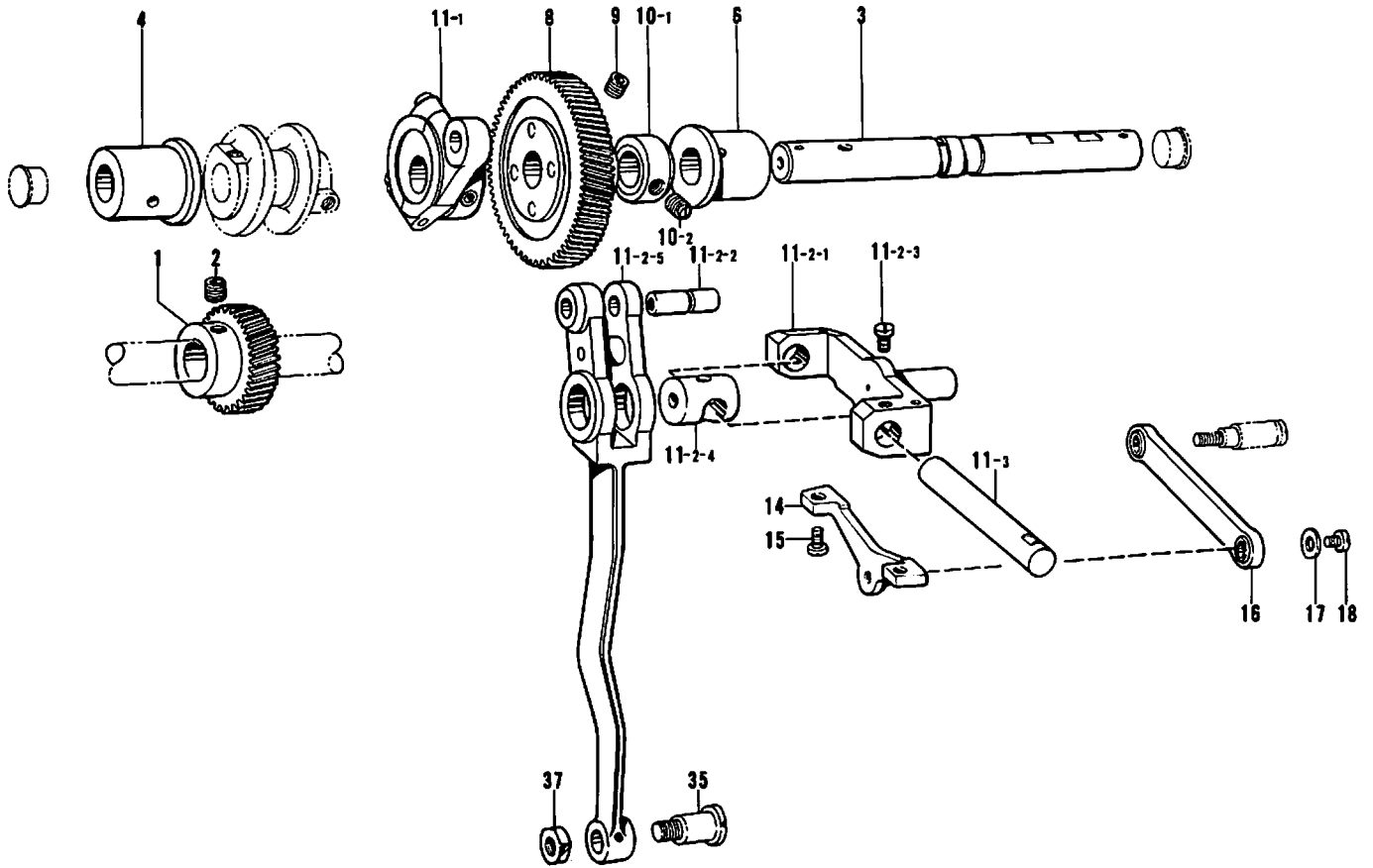
C. Upper shaft mechanism



Ref. No.	Name of Parts	Q'ty	Parts No.	Assembly No.	Ref. No.	Name of Parts	Q'ty	Parts No.	Assembly No.
1	Upper Shaft	1	141271-001		16	Stop Ring C15	1	048150-142	
2	Upper Shaft Bushing (Front)	1	141272-001		17	Arm Shaft Pulley	1	141280-001	
3	Upper Shaft Bushing (Intermediate)	1	141273-000		18	Block for Pulley	1	141281-001	
4	Bearing Case	1	141274-000		19	Screw	1	141282-001	
5	Screw 4.37 x 12	3	009681-212		20	Screw 3.57 x 7	1	013670-712	
6	Bearing 6202VV	2	072620-260		21	Plunge Spring	1	141283-001	
7	Bearing Collar	1	141275-001		22	Plunge Spring Supporter	1	141284-000	
8	Bearing Cap	1	141276-001		23	Block for Pulley Stop Cam	1	141285-001	
9	Screw 3.57	3	102843-004		24	Stop Cam Assembly	1	141286-001	
10	Oil Rejector	1	141277-000		25	Cap for Stop Cam	1	141289-001	
11	Idle Pulley	1	141278-001		26	Screw 3.57	3	117348-001	
12	Bearing 6005VV	1	072600-560		27	Pin	1	142297-001	
13	Bearing Cap (Large)	1	141279-001		28	Screw 6.35 x 6	1	014770-622	
14	Screw 3.57	4	102843-004		29	Screw 6.35	1	101706-001	
15	Stop Ring C25	1	048250-142		30	Pulley Inside Cover	1	142751-001	

[NOTE! PREFIX ALL NUMBERS BY 'BR'.]
 [EXAMPLE BR009681-0-14]

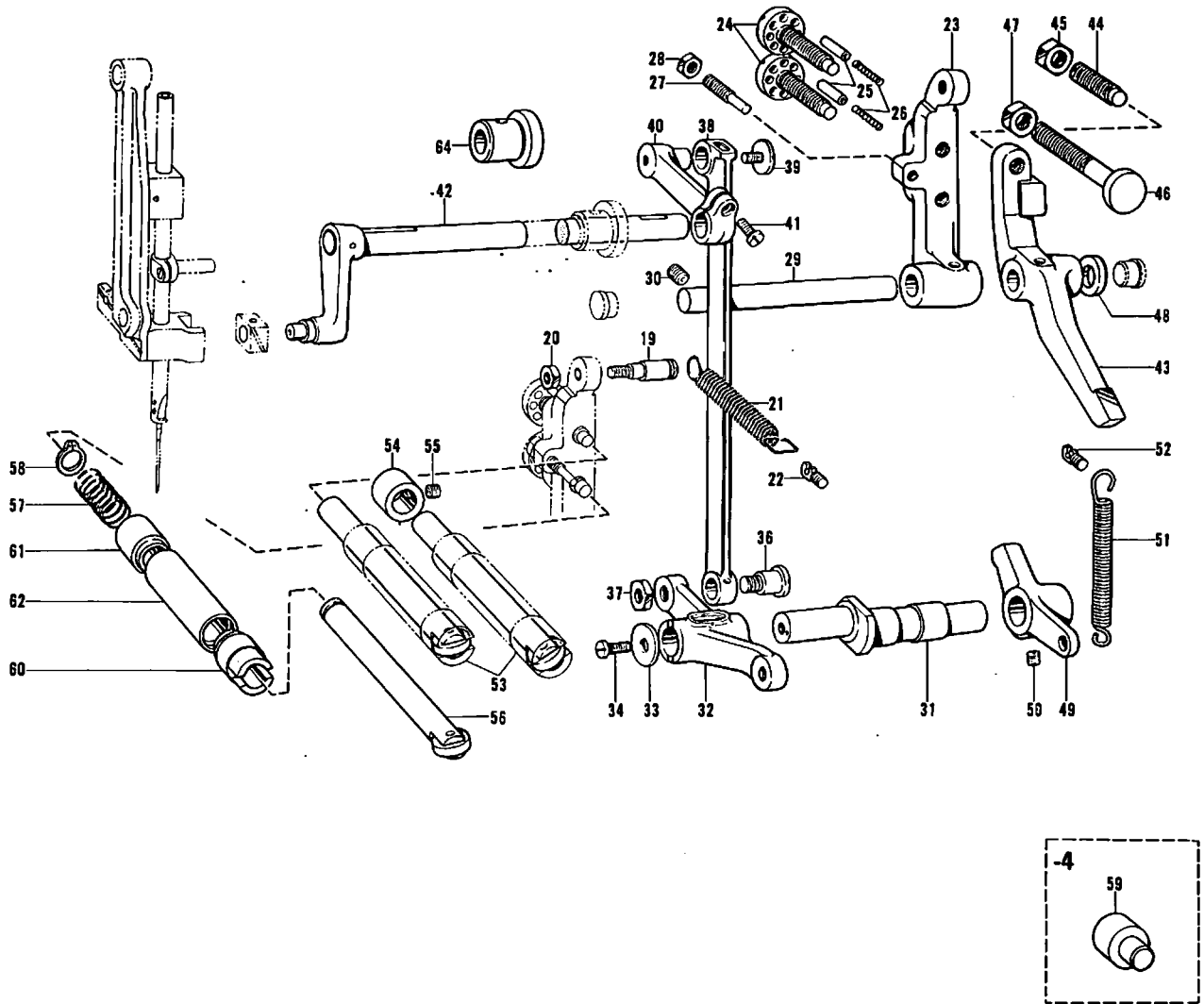
D. Zigzag mechanism (1)



Ref. No.	Name of Parts	Q'ty	Parts No.	Assembly No.	Ref. No.	Name of Parts	Q'ty	Parts No.	Assembly No.
1	Speed Reduction Gear	1	141309-001		11-2-3	Screw 4.37	1	104908-002	D-11 Zigzag Adjusting Cam Assembly 147901-001
2	Screw 6.35 x 6	2	014770-622		11-2-4	Zigzag Adjusting Ring	1		
3	Sub Shaft	1	141310-001		11-2-5	Zigzag Adjusting Ring Connector	1		
4	Sub Shaft Bushing (Left)	1	141311-000		11-3	Pin	1	141326-001	
6	Sub Shaft Bushing (Right)	1	141312-000		14	Zigzag Adjusting Link Shaft	1	141328-001	
8	Sub Shaft Gear	1	141313-001		15	Screw 4.37 x 7	2	009680-712	
9	Screw 6.35 x 6	2	014770-622		16	Zigzag Adjusting Link	1	141329-001	
10-1	Collar	1		D-10 Collar Assembly 181994-001	17	Washer	1	102707-002	
10-2	Screw 5.95	2	151604-001		18	Screw 3.57 x 6	1	009670-612	
11-1	Zigzag Cam	1		D-11 Zigzag Adjusting Cam Assembly 147901-001	35	Screw 7.94	1	141344-001	
11-2-1	Zigzag Adjusting Bracket	1			37	Nut 7.94	2	403388-002	
11-2-2	Zigzag Adjusting Shaft	1							

[NOTE! PREFIX ALL NUMBERS BY 'BR'.]
 [EXAMPLE BR009681-0-14]

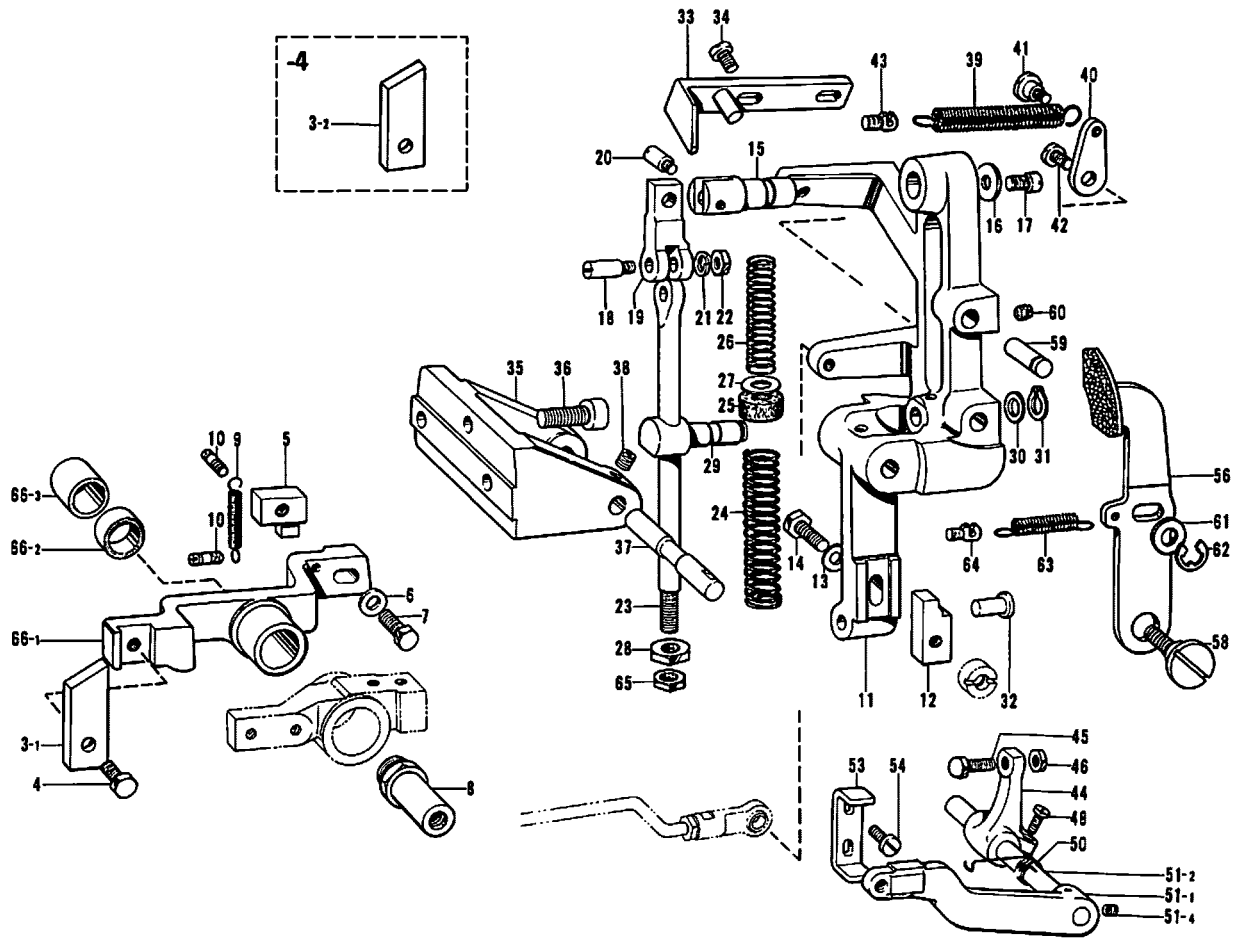
D. Zigzag mechanism (2)



Ref. No.	Name of Parts	Q'ty	Parts No.	Assembly No.	Ref. No.	Name of Parts	Q'ty	Parts No.	Assembly No.
19	Pin	1	141332-001		43	Zigzag Position Changing Lever	1	141354-000	
20	Nut 5.95	1	106588-003		44	Screw	1	141355-001	
21	Spring	1	141333-001		45	Nut 7.94	1	105812-003	
22	Spring Hook	1	141334-001		46	Screw	1	141356-001	
23	Zigzag Adjusting Lever	1	141335-000		47	Nut 7.94	1	105812-002	
24	Screw	2	141336-001		48	Washer	1	158449-001	
25	Pin	2	141337-001		49	Stopper	1	141357-000	
26	Spring	2	141338-001		50	Screw 5.95 x 6	2	014760-622	
27	Screw	1	141339-001		51	Spring	1	141358-001	
28	Nut 5.95	1	106588-003		52	Spring Hook	1	141334-001	
29	Zigzag Adjusting Lever Shaft	1	141340-001		53	Zigzag Connecting Shaft		141359-001	
30	Screw 5.95	1	013760-612		54	Collar	1	141351-001	
31	Zigzag Eccentric Shaft	1	141341-001		55	Screw 6.35 x 6	1	014770-622	
32	Zigzag Eccentric Shaft Link	1	141342-000		56	Bar Tack Connecting Shaft	1	141659-001	
33	Washer	1	149095-001		57	Spring	1	141363-001	
34	Screw 5.95 x 12	1	009761-212		58	Stop Ring C11	1	048110-142	
36	Screw 7.94	1	141345-001		59	Stud	1	145344-001	
38	Zigzag Connecting Rod	1	141346-001		60	Bushing (Right)		141716-000	
39	Screw 4.76	1	100511-003		61	Bushing (Left)		141365-000	
40	Zigzag Connecting Lever (A)	1	141347-001		62	Collar		141366-001	
41	Screw 4.76 x 14	1	009711-412		64	Bushing	1	147155-000	
42	Zigzag Connecting Lever (B)	1	141348-001						

[NOTE! PREFIX ALL NUMBERS BY 'BR'.]
 [EXAMPLE BR009681-0-14]

E. Clutch mechanism



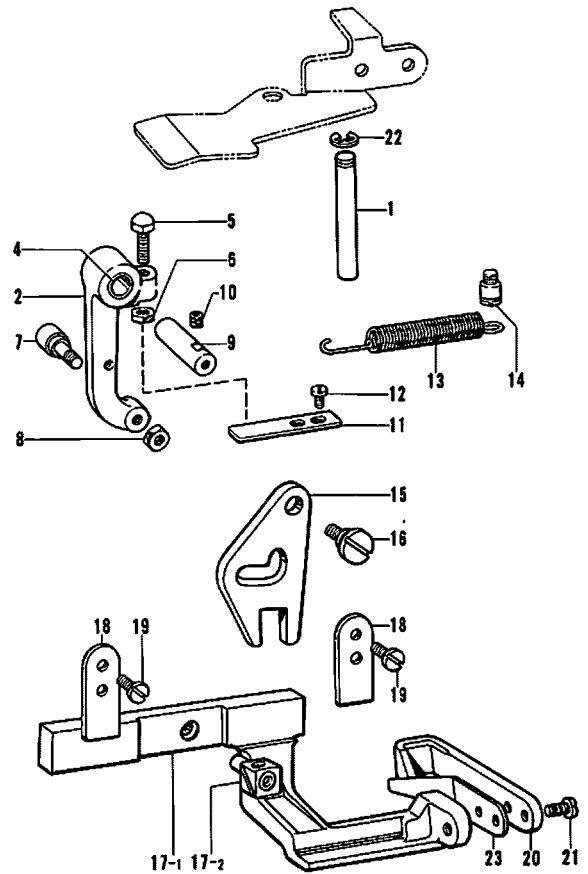
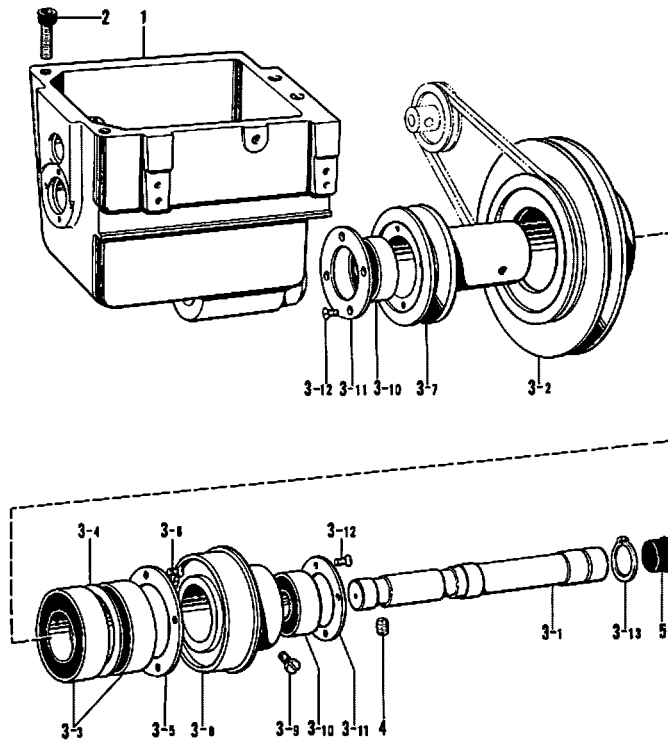
Ref. No.	Name of Parts	Q'ty	Parts No.	Assembly No.	Ref. No.	Name of Parts	Q'ty	Parts No.	Assembly No.
3-1	Stop Cam Segment (B)	1	141547-001		34	Screw 5.95 x 10	2	009761-012	
3-2	Stop Cam Segment (B)	1	145442-001		35	Clutch Lever Bracket	1	141557-002	
4	Bolt 5.95 x 14	1	017761-412		36	Bolt 8 x 25	3	018082-522	
5	Clutch Claw (A)	1	141548-001		37	Clutch Lever Shaft	1	141558-001	
6	Washer	1	118735-002		38	Screw 6.35 x 6	1	014770-622	
7	Bolt 6.35 x 14	1	017781-412		39	Clutch Return Spring	1	141559-001	
8	Emergency Stop Lever Shaft	1	141618-001		40	Adjusting Plate	1	115558-002	
9	Stop Lever Spring	1	141549-001		41	Screw 4.76	1	115559-002	
10	Spring Hook	2	141550-001		42	Screw 5.95 x 10	1	009761-012	
11	Clutch Lever	1	146041-002		43	Spring Hook	1	141334-001	
12	Clutch Claw (B)	1	141553-001		44	Clutch Starting Lever	1	146955-004	
13	Washer	1	118735-002		45	Bolt 7.94	1	115585-001	
14	Bolt 6.35 x 25	1	017782-512		46	Bolt 7.94	1	152997-001	
15	Clutch Stopper Stud	1	115542-001		48	Screw 4.76 x 14	2	009711-412	
16	Washer 6	1	025060-332		50	Clutch Starting Lever Spring	1	141562-001	
17	Screw 5.95 x 12	1	009761-212		51-1	Clutch Starting Lift Lever	1		E-31 Starting Lift Lever Assembly 154499-001
18	Screw	1	115544-001		51-2	Clutch Starting Lever Shaft	1		
19	Clutch Stopper	1	115545-001		51-4	Screw 6.35 x 6	1	014770-622	
20	Screw	1	115546-001		53	Stopper	1	141564-001	
21	Washer 2-5	1	028050-240		54	Screw 5.95 x 12	2	009761-212	
22	Nut 4.76	1	021710-202		56	Brake Lever Assembly	1	142755-001	
23	Stopper Bar	1	141554-001		58	Screw 7.14	1	141953-001	
24	Spring (C)	1	147639-001		59	Brake Lever Pin	1	142214-001	
25	Spring Felt	1	115550-001		60	Screw 5.95	1	151604-002	
26	Spring (B)	1	115551-001		61	Washer	1	107153-002	
27	Washer 10	1	025100-132		62	Stop Ring E7	1	048070-342	
28	Nut 9.52	1	021860-202		63	Brake Spring	1	142771-001	
29	Bar Clamp	1	115552-001		64	Spring Hook	1	141334-001	
30	Washer 10	1	025100-132		65	Nut 9.52	1	100075-004	
31	Stop Ring C10	1	048100-142		66-1	Stop Lever	1		E-66 Stop Lever Assembly 181708-001
32	Clutch Lever Pin	1	141555-001		66-2	Bushing	1	142372-000	
33	Belt Shifter	1	141556-101		66-3	Bushing	1	142373-000	

[NOTE! PREFIX ALL NUMBERS BY 'BR'.]
 [EXAMPLE BR009681-0-14]

From the library of: Diamond Needle Corp

F. Power transmitter mechanism

G. Belt shift mechanism



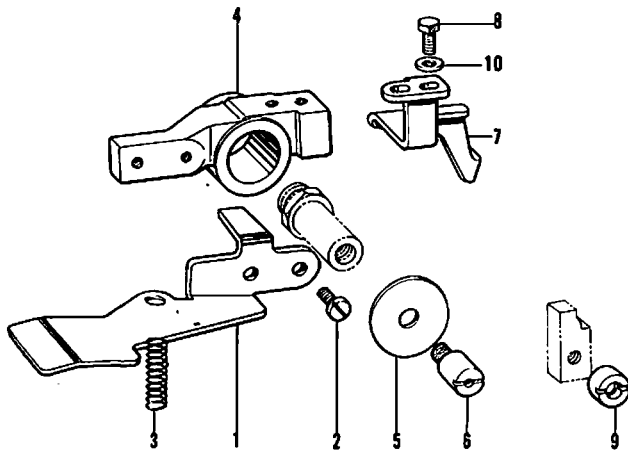
Ref. No.	Name of Parts	Q'ty	Parts No.	Assembly No.
1	Transmitter Base	1	147222-002	
2	Bolt 8 x 25	3	018082-522	
3-1	Transmitter Shaft	1		
3-2	Slow Speed Pulley	1		
3-3	Bearing 6007VV	2		
3-4	Bearing Coller	1		
3-5	Bearing Cap	1		
3-6	Screw 3.18 x 8	4	003660-812	
3-7	Pulley	1		
3-8	Pulley	1		
3-9	Screw 4.76 x 14	2	009711-412	
3-10	Bearing 6004VV	2		
3-11	Bearing Cap	2		
3-12	Screw 3.18 x 8	8	003660-812	
3-13	Stop Ring C20	1	048200-142	
4	Screw 6.35 x 10	2	013781-012	
5	Oil Cap	1	111937-001	

F-3
Transmitter
Assembly
141566-001

[NOTE! PREFIX ALL NUMBERS BY 'BR'.]
EXAMPLE BR009681-0-14

Ref. No.	Name of Parts	Q'ty	Parts No.	Assembly No.
1	Belt Shifter Bar	1	141574-001	
2	Belt Shift Lever	1	141575-001	
4	Bushing	2	142373-000	
5	Bolt 7.94	1	115585-001	
6	Nut 7.94	1	152997-001	
7	Roller with Roller Stud Assembly	1	141576-001	
8	Nut 5.56	1	021750-102	
9	Belt Shift Lever Pin	1	141579-001	
10	Screw 6.35 x 6	1	014770-622	
11	Stopper Plate	1	141580-001	
12	Screw 4.37 x 8	2	009680-812	
13	Spring	1	141581-001	
14	Spring Hook	1	141472-002	
15	Belt Shifter Cam	1	141582-001	
16	Screw 6.35	1	141583-001	
17-1	Belt Shifter Bracket	1		G-17 Belt Shifter Bracket Assembly 141584-001
17-2	Slide Block	1	141586-001	
18	Belt Shifter Guide	2	141588-001	
19	Screw 4.37 x 8	4	009680-812	
20	Belt Shifter	1	141589-001	
21	Screw 4.76 x 10	2	009711-012	
22	Stop Ring E7	1	048070-342	
23	Spring	1	145931-001	

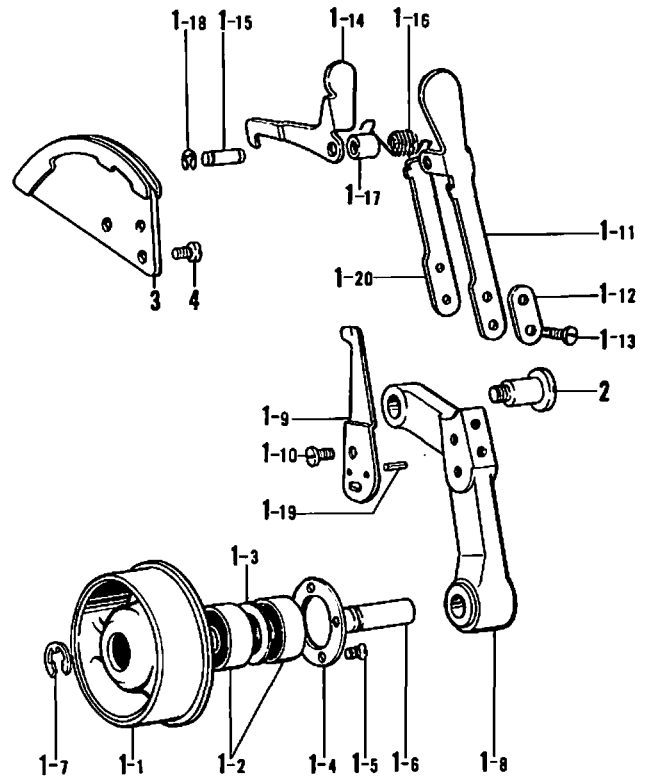
H. Emergency stop mechanism



Ref. No.	Name of Parts	Q'ty	Parts No.	Assembly No.
1	Emergency Stop Lever	1	141698-001	
2	Screw 4.37	2	107407-003	
3	Spring	1	141699-001	
4	Emergency Stop Supporter	1	141700-001	
5	Washer	1	141701-001	
6	Screw	1	141702-001	
7	Retainer Plate	1	141703-001	
8	Bolt 4.37 x 10	2	017681-012	
9	Emergency Stop Joint	1	141704-001	
10	Washer 4.37	2	025680-232	

[NOTE! PREFIX ALL NUMBERS BY 'BR'.]
 [EXAMPLE BR009681-0-14]

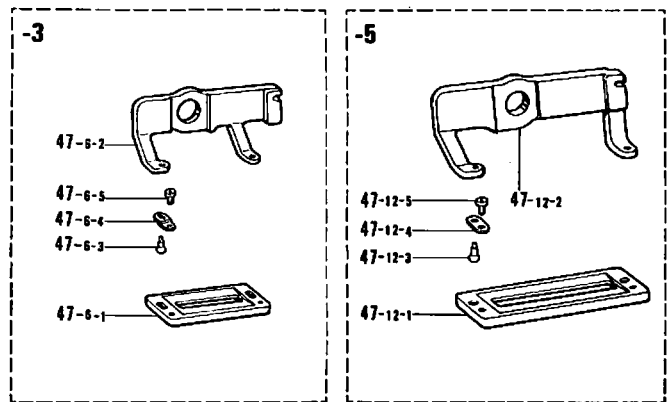
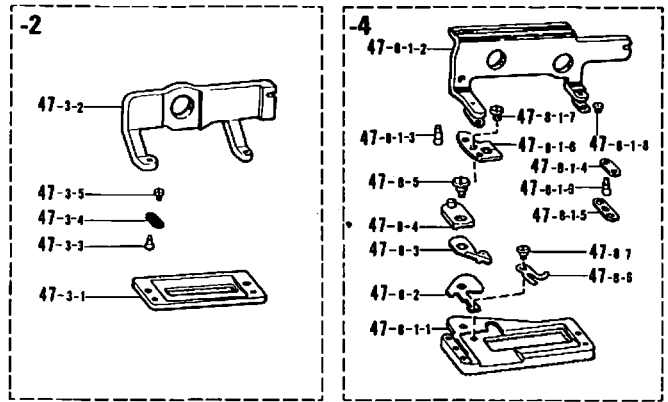
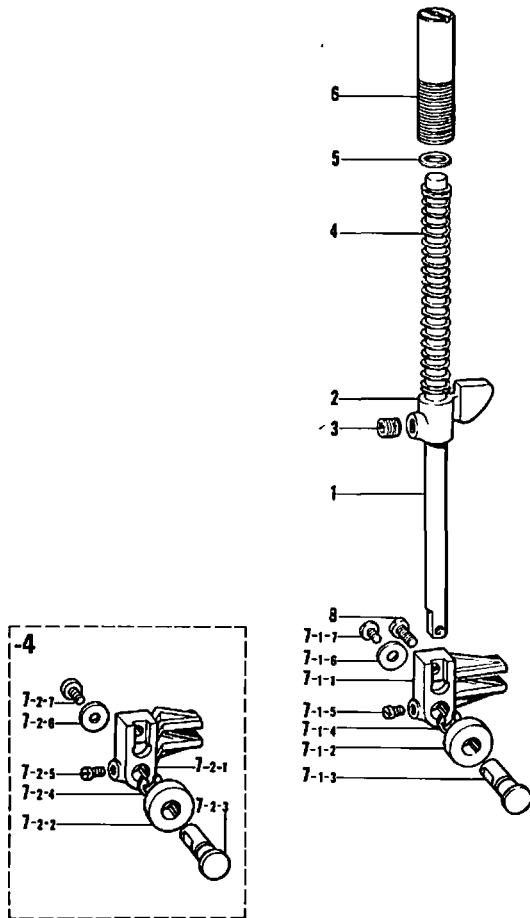
J. Tension pulley mechanism



Ref. No.	Name of Parts	Q'ty	Parts No.	Assembly No.
1- 1	Tension Pulley	1	141622-000	J-1 Tension Pulley Assembly 141621-001
1- 2	Bearing 6000DD	2	072600-040	
1- 3	Collar	1	142342-000	
1- 4	Cap Plate	1	141316-001	
1- 5	Screw 3.18	4	110185-002	
1- 6	Tension Pulley Shaft	1	141623-001	
1- 7	Stop Ring E9	1	048090-342	
1- 8	Tension Pulley Arm	1	141624-001	
1- 9	Tension Pulley Indicator	1	141625-001	
1-10	Screw 3.57 x 6	2	009670-612	
1-11	Tension Pulley Lever	1	143917-001	
1-12	Washer	1	141627-001	
1-13	Screw 3.57 x 12	2	007671-212	
1-14	Tension Pulley Pawl	1	141628-001	
1-15	Tension Pulley Pawl Shaft	1	141629-001	
1-16	Spring	1	141630-001	
1-17	Collar	1	141631-001	
1-18	Stop Ring E3	2	048030-342	
1-19	Spring Pin AW2.5	2	047250-842	
1-20	Tension Lever	1	143914-001	
2	Screw 7.94	1	141632-001	
3	Tension Pulley Ratchet	1	141633-001	
4	Screw 4.37 x 8	3	009680-812	

K. Presser foot mechanism

L. Feed mechanism (1)



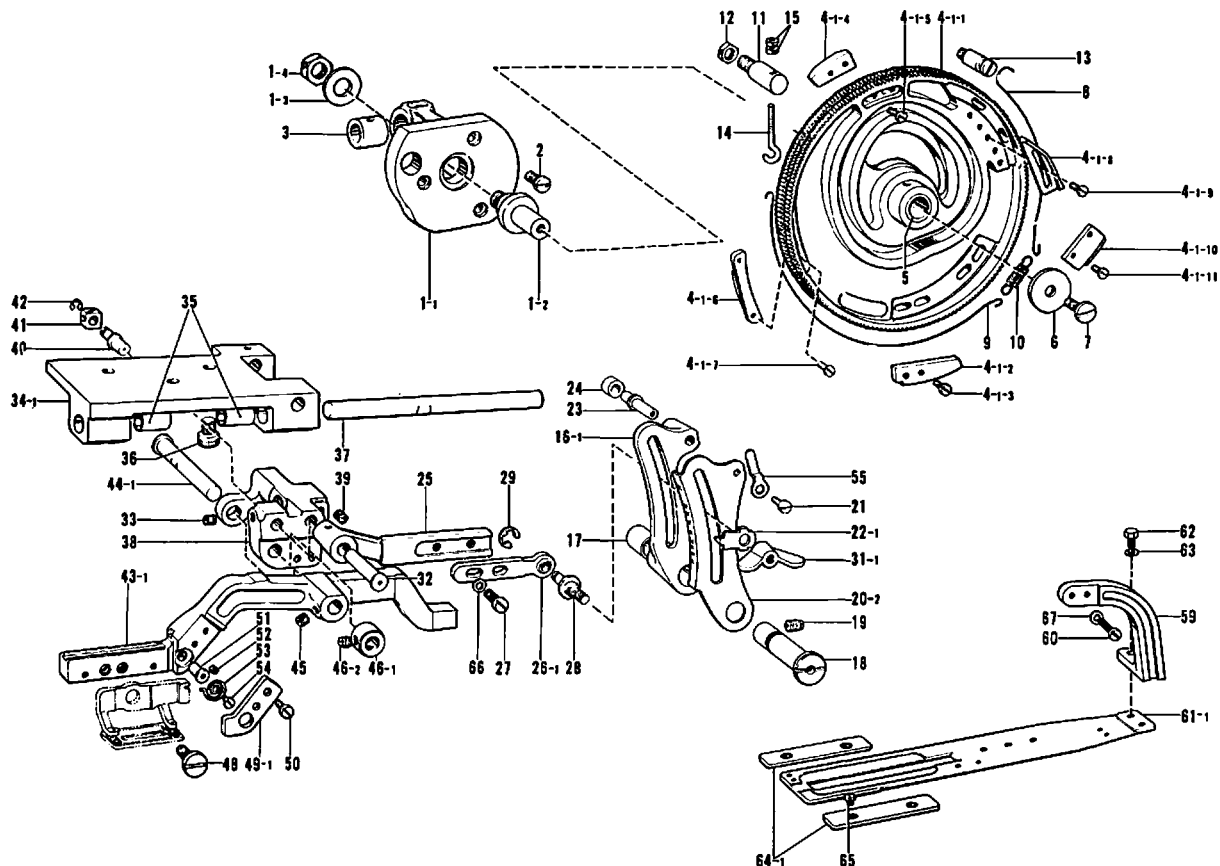
Ref. No.	Name of Parts	Q'ty	Parts No.	Assembly No.
1	Presser Bar	1	141449-001	
2	Presser Bar Bracket	1	141450-001	
3	Screw 6.35 x 6	1	014770-622	
4	Presser Bar Spring (Large)	1	141451-001	
5	Washer	1	100281-001	
6	Screw	1	141454-001	
7-1-1	Presser Bar Roller Bracket	1		K-7-1 Presser Bar Roller Bracket Assembly 141455-001
7-1-2	Roller 7 x 17	1	156879-001	
7-1-3	Roller Stud	1		
7-1-4	Stop Ring E6	1	048060-342	
7-1-5	Screw 4.37 x 5	1	100366-002	
7-1-6	Washer 3.5	1	025350-332	
7-1-7	Screw 3.57 x 5	1	001670-512	
7-2-1	Presser Bar Roller Bracket	1		K-7-2 Presser Bar Roller Bracker Assembly 145377-001
7-2-2	Roller 7 x 14	1	156880-001	
7-2-3	Roller Stud	1		
7-2-4	Stop Ring E6	1	048060-342	
7-2-5	Screw 4.37 x 5	1	100366-002	
7-2-6	Washer 3.5	1	025350-332	
7-2-7	Screw 3.57 x 5	1	001670-512	
8	Screw 4.37 x 10	1	009681-012	

[NOTE! PREFIX ALL NUMBERS BY 'BR'.]
EXAMPLE BR009681-0-14

Ref. No.	Name of Parts	Q'ty	Parts No.	Assembly No.
47- 3-1	Upper Clamping Foot Rubber	1	144498-001	L-47-3 Upper Clamping Rubber Foot Assembly 150764-001
47- 3-2	Upper Clamping Foot Supporter	1	144496-001	
47- 3-3	Pin	2	144496-001	
47- 3-4	Spring	2	107401-001	
47- 3-5	Screw 1.98	2	107404-001	
47- 6-1	Upper Clamping Foot Rubber	1	144630-001	L-47-6 Upper Clamping Foot Assembly 150768-001
47- 6-2	Upper Clamping Foot Supporter	1	144496-001	
47- 6-3	Pin	2	144496-001	
47- 6-4	Rubber Foot Presser Plate Spring	2	144707-001	
47- 6-5	Screw 1.98	2	107404-001	
47- 8-1-1	Upper Clamping Foot (25-4)	1	145362-001	L-47-8 Upper Clamping Foot Assembly, 25 mm 150770-001
47- 8-1-2	Upper Clamping Foot Supporter	1		
47- 8-1-3	Pin	1	144496-001	
47- 8-1-4	Spring	1	107401-001	
47- 8-1-5	Spring Plate	1	145365-001	
47- 8-1-6	Thread Presser	1	145366-001	
47- 8-1-7	Screw 2.38	2	111105-001	
47- 8-1-8	Screw 1.98	1	107404-001	
47- 8-1-9	Pin	1	146034-001	
47- 8-2	Gimp Fixed Knife	1	145367-001	
47- 8-3	Gimp Trimming Knife	1	145731-001	
47- 8-4	Gimp Trimming Crank	1	145369-001	
47- 8-5	Screw 3.57	1	145370-001	
47- 8-6	Gimp Detach Lever	1	145373-001	
47- 8-7	Screw 2.38	1	145371-001	
47-12-1	Upper Clamping Foot 50	1	147230-001	L-47-12 Upper Clamping Foot Assembly, 50 150766-001
47-12-2	Upper Clamping Foot Supporter 50	1		
47-12-3	Pin	2	144496-001	
47-12-4	Spring	2	107401-001	
47-12-5	Screw 1.98	2	107404-001	

From the library of: Diamond Needle Corp

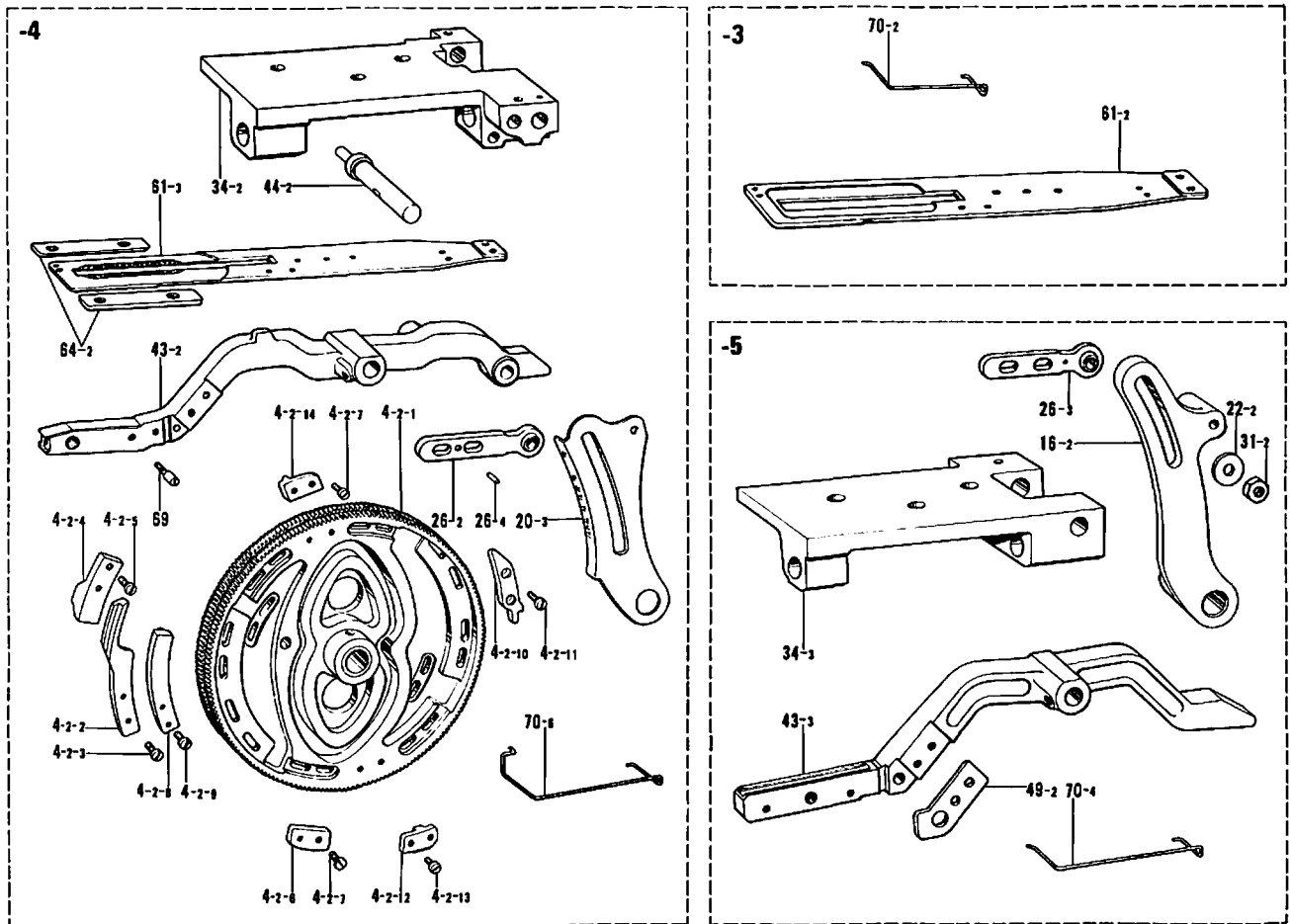
L. Feed mechanism (2)



Ref. No.	Name of Parts	Q'ty	Parts No.	Assembly No.	Ref. No.	Name of Parts	Q'ty	Parts No.	Assembly No.
1-1	Feed Cam Shaft Bracket	1		L-1 Feed Cam Shaft Assembly 141401-001	26-1	Feed Lever (B)	1	141422-001	
1-2	Feed Shaft	1			27	Screw 5.95 x 10	2	009761-012	
1-3	Washer 12.70	1	025900-232		28	Feed Lever Shaft	1	147945-001	
1-4	Nut 12.70	1	021910-302		29	Stop Ring E5	1	048050-342	
2	Screw 5.95 x 12	3	009761-212	L-4-1 Feed Cam Assembly 143942-001	31-1	Wing Nut 5.95	1	118262-002	
3	Bushing	1	141404-000		32	Stud	1	141426-001	
4-1-1	Feed Cam	1			33	Screw 6.35 x 6	1	014770-622	
4-1-2	Thread Release Cam Segment	1	143943-001		34-1	Feed Guide Shaft Bracket	1	141427-002	
4-1-3	Screw 4.37	2	107407-003		35	Bushing	2	142374-000	
4-1-4	Thread Tension Release Segment (B)	1	143944-001		36	Bolt 8 x 14	3	018081-422	
4-1-5	Screw 4.37 x 12	2	009681-212		37	Feed Guide Shaft	1	141429-001	
4-1-6	Bar Tack Cam Segment	2	141445-001		38	Feed Arm Bracket	1	141430-002	
4-1-7	Screw 4.37 x 12	4	009681-212		39	Screw 6.35 x 6	1	014770-622	
4-1-8	Stop Cam Segment (Large)	1	141446-001		40	Stud	1	141431-001	
4-1-9	Screw 4.37 x 10	2	009681-012		41	Feed Bar Guide Block	1	118215-001	
4-1-10	Cutter Segment	1	141448-001	42	Stop Ring E4	1	048040-342		
4-1-11	Screw 4.37	2	107407-003	43-1	Length Feed Arm	1	141433-002		
5	Bushing	1	142375-000	44-1	Feed Arm Shaft	1	141434-001		
6	Washer	1	141400-001	45	Screw 6.35 x 6	1	014770-622		
7	Screw 5.95	1	141408-001	46-1	Collar	1		L-46 Collar Assembly 181969-003	
8	Cam Brake Wire (A)	1	141409-001	46-2	Screw 6.35	2	101706-003		
9	Cam Brake Wire (B)	1	141410-001	48	Screw 6.35	1	141439-001		
10	Spring	1	141411-001	49-1	Guide Plate	1	141440-001		
11	Cam Brake Hook Bracket	1	141412-001	50	Screw 4.37 x 6	2	009680-612		
12	Nut 7.94	1	106147-002	51	Stud	1	141441-001		
13	Hook	1	141413-001	52	Screw 4.37	1	151601-002		
14	Adjusting Hook	1	140947-002	53	Upper Clamping Foot Spring	1	141442-001		
15	Nut 4	2	021400-102	54	Screw 3.18 x 3.5	1	009669-312		
16-1	Length Feed Adjusting Lever	1	143739-002	55	Stopper	1	144541-001		
17	Bushing	2	142372-000	59	Lower Feed Arm	1	143738-002		
18	Length Feed Adjusting Lever Shaft	1	141417-001	60	Screw 4.37 x 20	2	009682-012		
19	Screw 5.95	1	151605-002	61-1	Length Feed Plate	1	145248-001		
20-2	Length Feed Indicator Plate	1	143740-001	62	Bolt 4.37 x 10	2	017681-012		
21	Screw 3.57 x 6	1	009670-612	63	Washer	2	113431-002		
22-1	Length Feed Indicator	1	141419-001	64-1	Length Feed Guide Plate	2	143743-001		
23	Roller Stud	1	141420-001	65	Screw 3.57	4	106568-003		
24	Roller	1	107550-002	66	Washer	2	118735-002		
25	Feed Lever (A)	1	141421-002	67	Washer	2	100645-003		

[NOTE! PREFIX ALL NUMBERS BY 'BR'.]
 [EXAMPLE BR009681-0-14]

L. Feed mechanism (3)

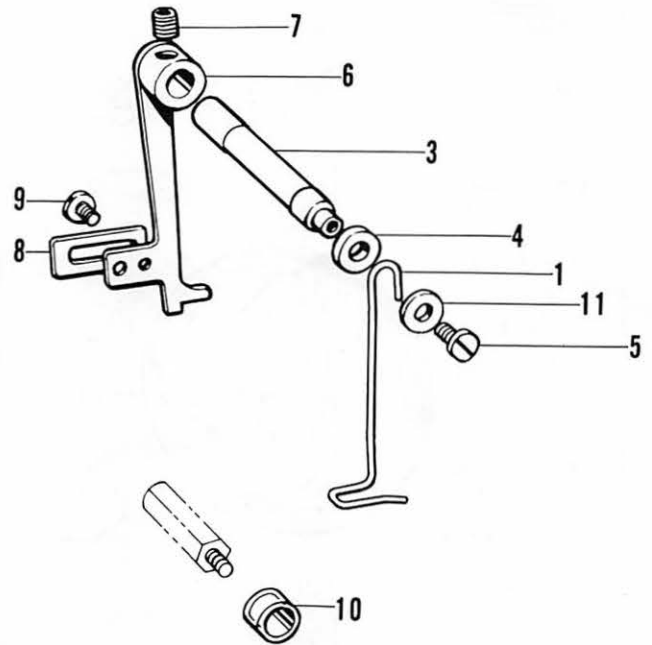
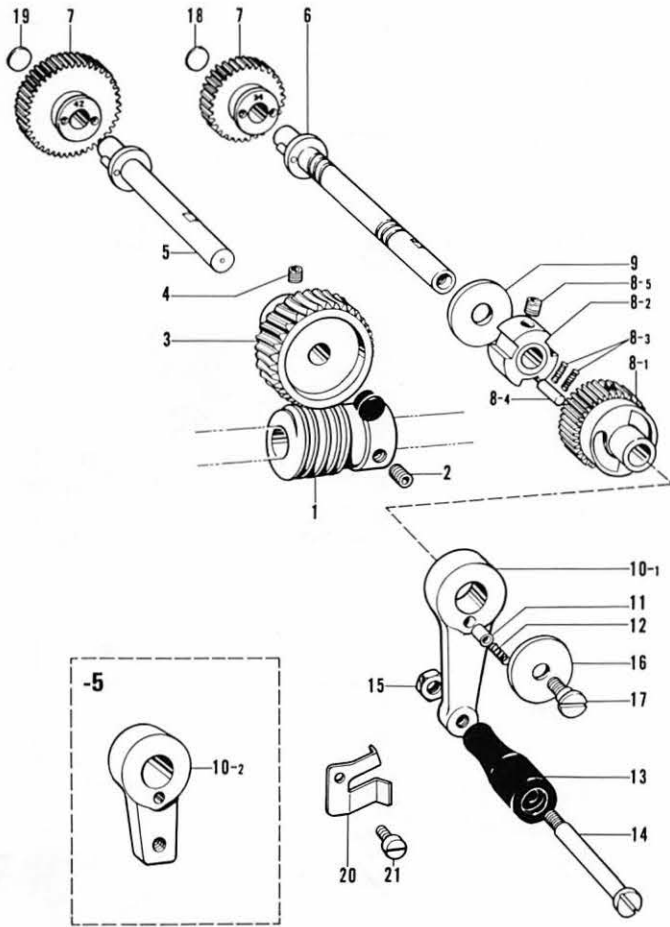


Ref. No.	Name of Parts	Q'ty	Parts No.	Assembly No.	Ref. No.	Name of Parts	Q'ty	Parts No.	Assembly No.
4- 2- 1	Feed Cam	1		L-4-2 Feed Cam Assembly 146336-001	26- 2	Feed Lever (B) Assembly	1	145445-001	
4- 2- 2	Push Cam	2	145348-001		26- 3	Feed Lever (B) Assembly	1	147939-001	
4- 2- 3	Screw 4.37 x 12	4	009681-212		26- 4	Spring Pin AW 4 x 8	1	047400-842	
4- 2- 4	Zigzag Cam Segment	2	146338-001		31- 2	Nut 5.95	1	106588-003	
4- 2- 5	Screw 4.37 x 12	4	009681-212		34- 2	Feed Guide Shaft Bracket	1	145354-002	
4- 2- 6	Zigzag Cam	1	145350-001		34- 3	Feed Guide Shaft Bracket	1	151583-002	
4- 2- 7	Screw 4.37 x 10	4	009681-012		43- 2	Length Feed Arm	1	145356-002	
4- 2- 8	Bar Tack Cam	2	145351-001		43- 3	Length Feed Arm	1	147228-002	
4- 2- 9	Screw 4.37 x 8	4	009680-812		44- 2	Feed Arm Shaft	1	145355-001	
4- 2-10	Stop Cam	1	145352-001		49- 2	Guide Plate	1	147232-001	
4- 2-11	Screw 4.37 x 8	2	009680-812		61- 2	Length Feed Plate	1	144627-001	
4- 2-12	Cutter Cam	1	145353-001		61- 3	Length Feed Plate	1	145357-001	
4- 2-13	Screw 4.37 x 10	2	009681-012		64- 2	Length Feed Guide Plate	2	145358-001	
4- 2-14	Zigzag Cam	1	146130-001		69	Pin	1	115120-001	
16- 2	Length Feed Adjusting Lever	1	147229-002	70- 2	Finger Guard (M)	1	150562-000		
20- 3	Length Feed Indicator Plate	1	145359-001	70- 4	Finger Guard (LL)	1	150564-000		
22- 2	Washer 6	1	025060-332	70- 6	Finger Guard (M)	1	150566-000		

[NOTE! PREFIX ALL NUMBERS BY 'BR'.]
 [EXAMPLE BR009681-0-14]

M. Feed cam mechanism

N. Thread breakage detector

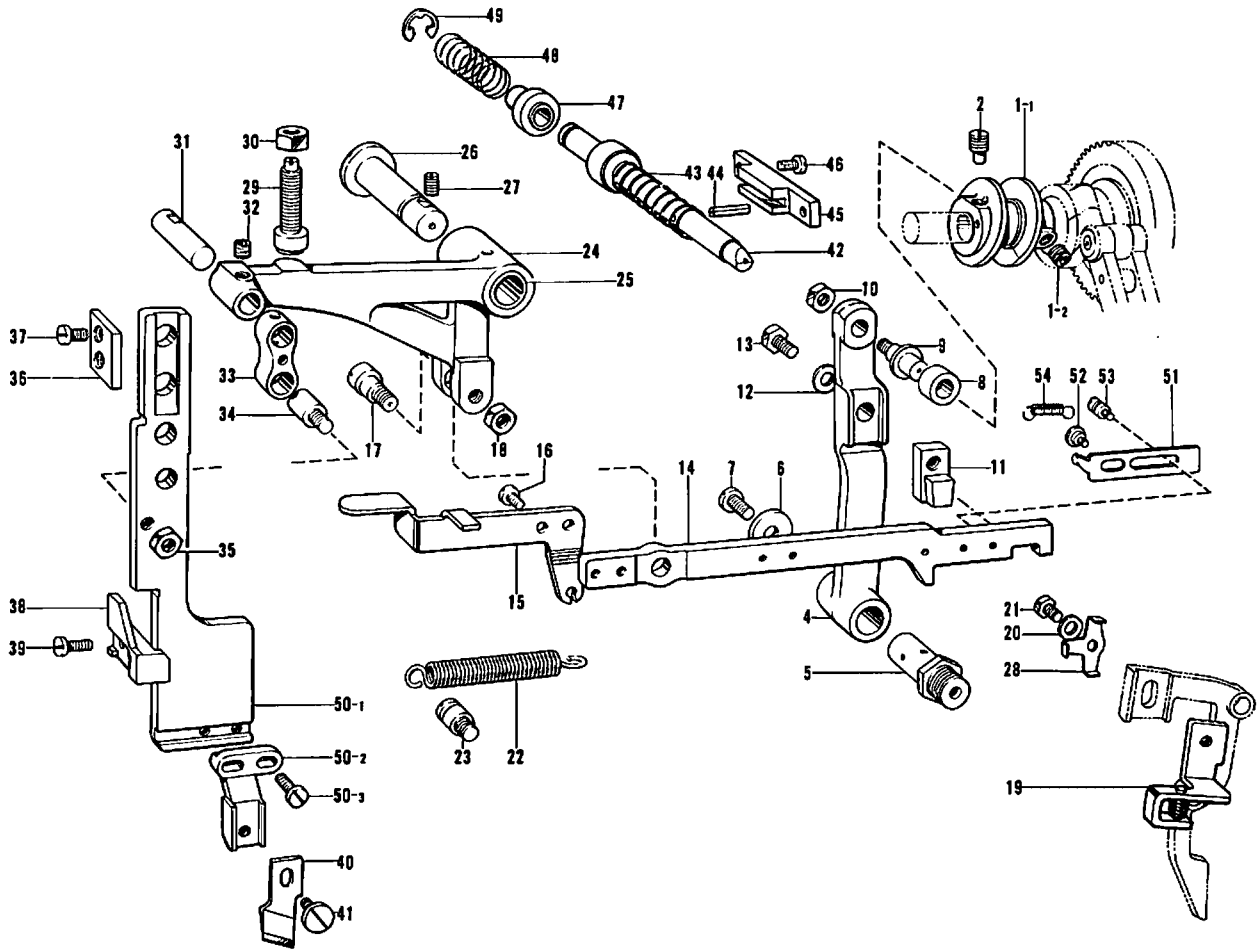


Ref. No.	Name of Parts	Q'ty	Parts No.	Assembly No.
1	Worm	1	141367-001	
2	Screw 6.35 x 6	2	014770-622	
3	Worm Wheel	1	141368-000	
4	Screw 6.35 x 6	2	014770-622	
5	Worm Wheel Shaft	1	141369-001	
6	Gear Shaft	1	141714-001	
7	Gear	1		
7	Gear	1		
8-1	Free Wheel Gear	1		M-8 Free Wheel Cam Assembly 141389-001
8-2	Free Wheel Cam	1		
8-3	Spring	6	141392-001	
8-4	Pin	3	141393-001	
8-5	Screw 5.95 x 6	2	014760-622	
9	Washer	1	141394-001	
10-1	Handle Lever	1	141395-002	
10-2	Handle Lever	1	147559-002	
11	Pin	1	141396-001	
12	Spring	1	141397-001	
13	Handle	1	141398-001	
14	Handle Shaft	1	141399-001	
15	Nut 6.35	1	150556-001	
16	Washer	1	141400-001	
17	Screw 5.56	1	142702-002	
18	Gear Indicator (R)	1	142272-001	
19	Gear Indicator (L)	1	142273-001	
20	Spring	1	147317-001	
21	Screw 4.37 x 4.5	1	009689-412	

Ref. No.	Name of Parts	Q'ty	Parts No.	Assembly No.
1	Thread Breakage Perceiving Wire	1	141614-001	
3	Thread Breakage Perceiving Wire Bar	1	141616-001	
4	Collar	1	141617-001	
5	Screw 3.57 x 6	1	001670-612	
6	Cutter Bar Fixed Plate	1	141619-001	
7	Screw 5.95	1	013760-612	
8	Balance Plate	1	141620-001	
9	Screw 4.37	1	101671-002	
10	Vinyl Tube	1	117258-001	
11	Washer 3.5	1	025350-332	

[NOTE! PREFIX ALL NUMBERS BY 'BR'.]
 [EXAMPLE BR009681-0-14]

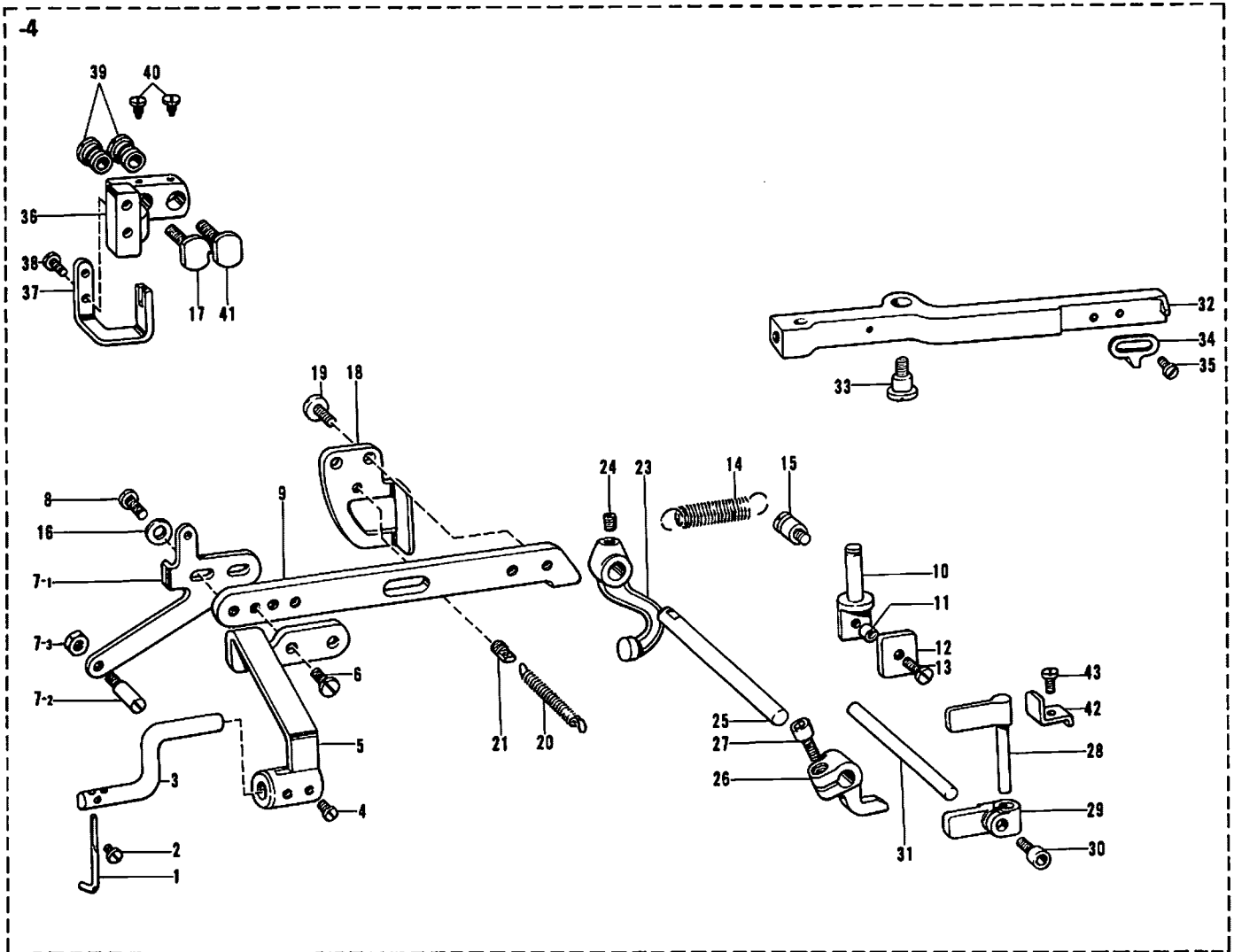
P. Cutter mechanism



Ref. No.	Name of Parts	Q'ty	Parts No.	Assembly No.	Ref. No.	Name of Parts	Q'ty	Parts No.	Assembly No.
1-1	Cutter Cam	1		P-1 Cutter Cam with Screw 181250-001	29	Cutter Base Lifter Stopper with Rubber	1	141481-001	
1-2	Screw 6.35 x 6	1	014770-622		30	Nut 9.52	1	152998-001	
2	Screw	1	141717-001		31	Cutter Base Connecting Shaft (A)	1	141474-001	
4	Cutter Connecting Lever	1	141462-001		32	Screw 6.35 x 6	1	014770-622	
5	Cutter Connecting Lever Shaft	1	141463-001		33	Cutter Base Connecting Link	1	141475-001	
6	Washer	1	149095-001		34	Cutter Base Connecting Shaft (B)	1	141476-001	
7	Screw 5.95 x 12	1	009761-212		35	Nut 5.95	1	150553-003	
8	Roller	1	141464-001		36	Cutter Base Guide (Upper)	1	141478-001	
9	Roller Shaft	1	141465-001		37	Screw 4.37 x 7	2	009680-712	
10	Nut 5.95	1	106588-003		38	Cutter Base Guide (Lower)	1	141479-001	
11	Cutter Connecting Slide Block	1	141466-001		39	Screw 4.37 x 14	2	009681-412	
12	Washer	1	109893-002		40	Cutter	1		
13	Bolt 6.35 x 20	1	017772-012		41	Screw 4.37	1	115503-001	
14	Cutter Lever	1	141467-001		42	Cutter Clutch Bar	1	141484-001	
15	Cutter Stop Lever	1	141468-001		43	Cutter Clutch Spring (A)	1	141485-001	
16	Screw 4.37 x 8	2	009680-812		44	Pin AW3	1	047301-842	
17	Screw	1	141469-001		45	Cutter Clutch Bar Guide	1	141486-001	
18	Nut 6.35	1	110744-002		46	Screw 3.57 x 8	2	009670-812	
19	Cutter Lever Supporting Plate	1	143945-001		47	Cutter Clutch	1	141487-001	
20	Washer	1	107453-001		48	Cutter Clutch Spring (B)	1	141488-001	
21	Bolt 5.56 x 14	1	017751-412		49	Stop Ring E8	1	048080-342	
22	Spring	1	141471-001		50-1	Cutter Base	1		P-50 Cutter Bracket Assembly 142724-001
23	Spring Hook	1	141472-002		50-2	Cutter Holder	1	141480-001	
24	Cutter Base Lifter	1	141473-002		50-3	Screw 4.37	2	107407-003	
25	Bushing	1	142376-000		51	Clutch	1	142779-001	
26	Length Feed Adjusting Lever Shaft	1	141417-001		52	Screw 3.57	2	112144-001	
27	Screw 6.35 x 10	1	013781-012		53	Spring Hook	1	107126-001	
28	Washer	1	143927-001		54	Spring	1	120790-001	

[NOTE! PREFIX ALL NUMBERS BY 'BR'.]
 [EXAMPLE BR009681-0-14]

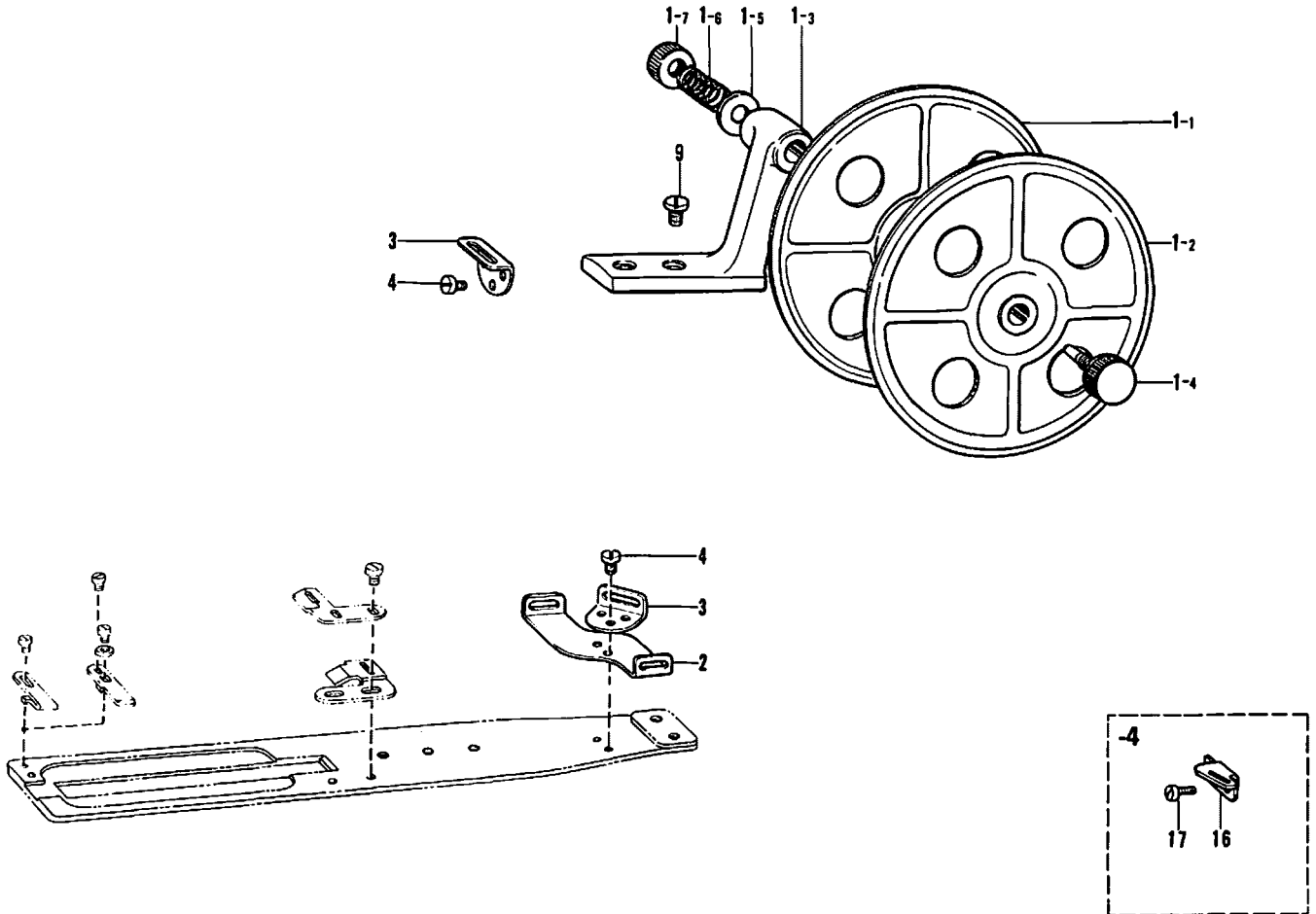
Q. Gimp Guide mechanism



Ref. No.	Name of Parts	Q'ty	Parts No.	Assembly No.	Ref. No.	Name of Parts	Q'ty	Parts No.	Assembly No.
1	Gimp Guide Pipe	1	145380-001		21	Spring Hook	1	107640-001	
2	Screw 3.57	1	111443-001		23	Gimp Guide Push Lever (A)	1	145394-001	
3	Gimp Guide Bar	1	145381-001		24	Screw 6.35 x 6	1	014770-622	
4	Screw 4.37 x 5	2	100366-002		25	Push Lever Shaft	1	145395-001	
5	Gimp Guide Bar Supporter	1	145382-001		26	Gimp Guide Push Lever (B)	1	151018-001	
6	Screw 4.37	2	107407-003		27	Bolt 4 x 12	1	018401-222	
7-1	Gimp Guide Changing Plate	1	147758-001	Q-7 Gimp Guide Changing Plate Assembly 145383-101	28	Lever (A)	1	145397-001	
7-2	Screw	1	141504-001		29	Lever (B)	1	145398-101	
7-3	Nut 4.76	1	110161-004		30	Bolt 4 x 8	1	018400-822	
8	Screw 4.37	2	107407-003		31	Shaft	1	145399-001	
9	Gimp Guide Connector	1	145384-001		32	Gimp Guide Lever	1	145400-001	
10	Gimp Guide Hinge	1	145385-001		33	Screw 5.95	1	115493-002	
11	Hinge Roller	1	145386-001		34	Stopper	1	145401-001	
12	Washer	1	145387-001		35	Screw 4.37 x 8	2	009680-812	
13	Screw 4.76 x 12	1	009711-212		36	Gimp Guide Position Bracket	1	145402-002	
14	Spring	1	145692-001		37	Gimp Guide Positioner	1	145403-001	
15	Spring Hook	1	145388-001		38	Screw 3.57 x 6	2	001670-612	
16	Washer 4.37	2	025680-232		39	Position Supporter	2	145404-001	
17	Screw	1	146316-001		40	Screw 3.57	2	102850-002	
18	Gimp Guide Pushing Plate	1	145392-001		41	Screw	1	145405-001	
19	Screw 4.37	2	107407-003		42	Lever Supporter	1	145406-001	
20	Spring	1	146951-001		43	Screw 3.57 x 8	1	009670-812	

[NOTE! PREFIX ALL NUMBERS BY 'BR'.]
EXAMPLE BR009681-0-14

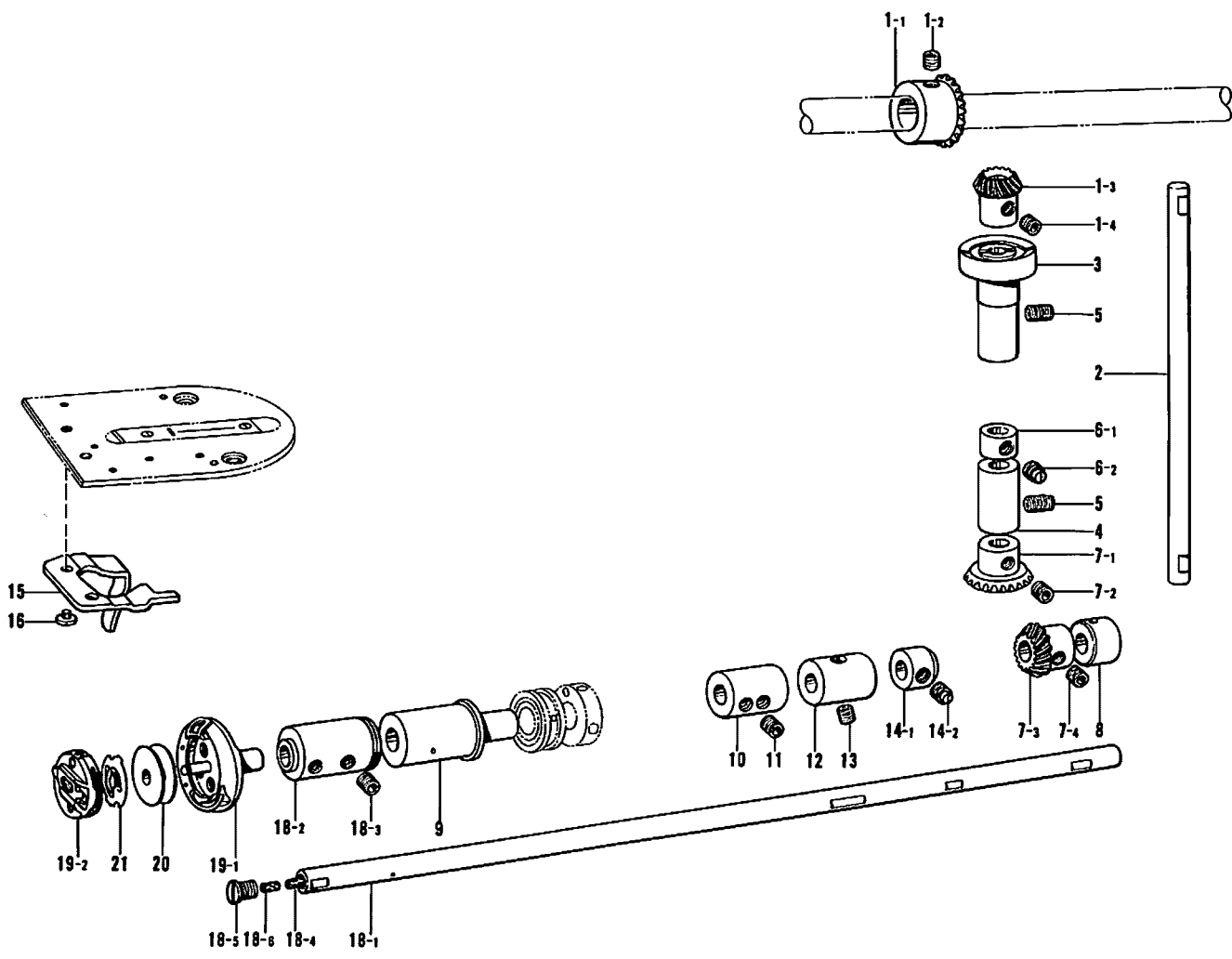
R. Tape winder mechanism



Ref. No.	Name of Parts	Q'ty	Parts No.	Assembly No.	Ref. No.	Name of Parts	Q'ty	Parts No.	Assembly No.
1-1	Tape Winder Wheel (R)	1		R-1 Tape Window Assembly 154500-001	2	Tape Guide Lower	1	143749-001	
1-2	Tape Winder Wheel (L)	1			3	Tape Guide Upper	2	143748-001	
1-3	Tape Winder Bracket	1			4	Screw 3.18 x 4	4	009660-412	
1-4	Screw	1	143980-001		9	Screw 4.37	2	107407-003	
1-5	Washer	1	108494-001		16	Tape Guide	1	145441-001	
1-6	Spring	1	108495-001		17	Screw 3.18 x 4	2	009660-412	
1-7	Tension Control Nut	1	100136-001						

[NOTE! PREFIX ALL NUMBERS BY 'BR'.]
 [EXAMPLE BR009681-0-14]

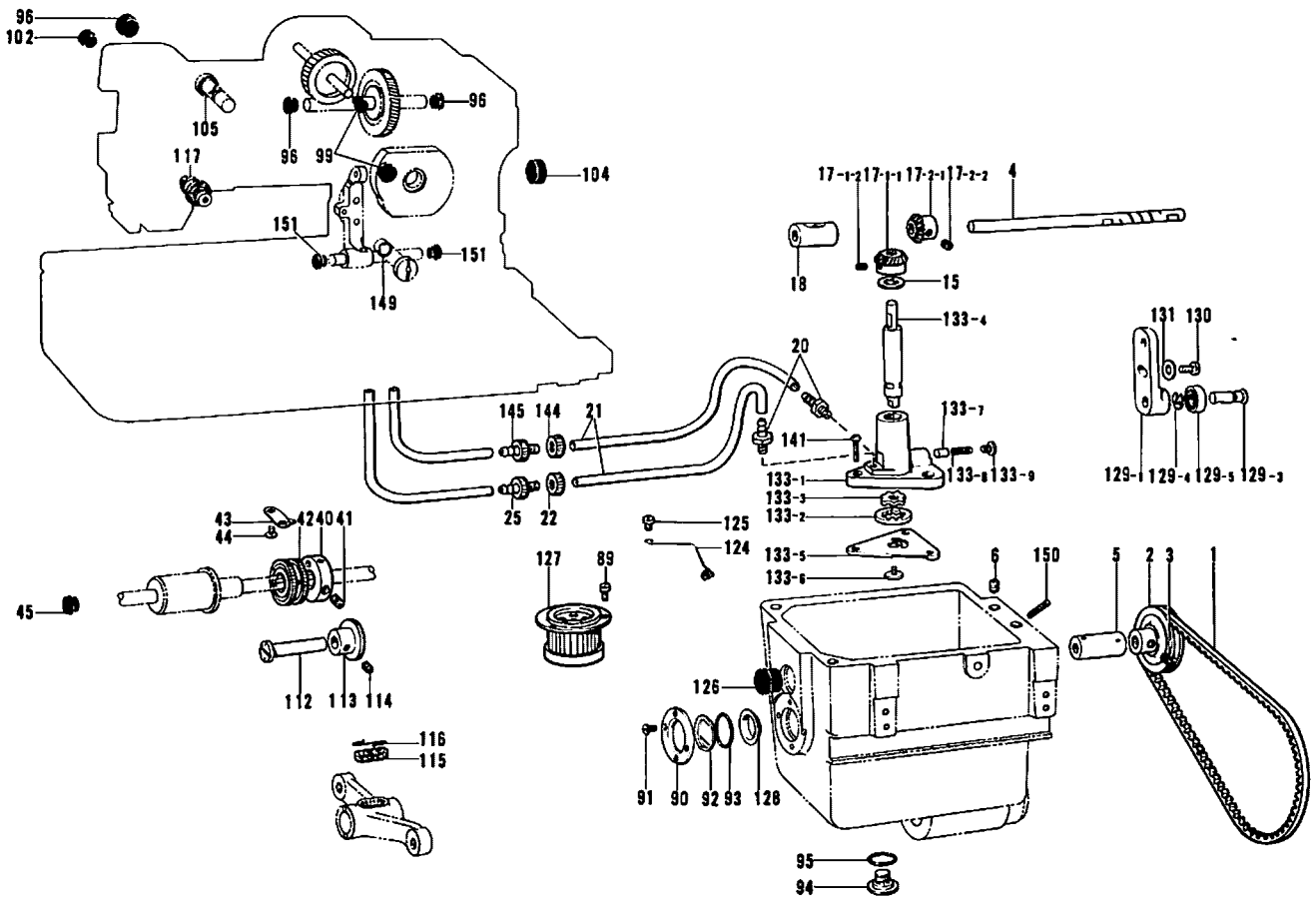
S. Vertical shaft and Lower shaft mechanism



Ref. No.	Name of Parts	Q'ty	Parts No.	Assembly No.	Ref. No.	Name of Parts	Q'ty	Parts No.	Assembly No.
1-1	Upper Shaft Gear	1		S-1 Upper Shaft Gear Assembly 181092-001	12	Lower Shaft Bushing (Intermediate)	1	141305-000	
1-2	Screw 6.35 x 6	2	014770-622		13	Screw 6.35 x 14	1	013771-410	
1-3	Vertical Shaft Gear	1			14-1	Collar	1		S-14 Vertical Shaft Collar Assembly 118759-001
1-4	Screw 6.35 x 6	2	014770-622		14-2	Screw 6.35	2	101706-001	
2	Vertical Shaft	1	141297-001		15	Rotary Hook Holder Positioner	1	141308-101	
3	Vertical Shaft Upper Bushing	1	141298-000		16	Screw 4.37 x 5	2	009680-512	
4	Vertical Shaft Lower Bushing	1	109208-001		18-1	Lower Shaft	1		S-18 Lower Shaft Assembly 143933-001
5	Screw 5.95	2	013761-410	18-2	Collar	1			
6-1	Collar	1		18-3	Screw 6.35-40	4	143793-001		
6-2	Screw 6.35	2	101706-001	18-4	Felt	1	142744-001		
7-1	Vertical Shaft Lower Gear	1		18-5	Screw	1	109173-001		
7-2	Screw 6.35 x 6	2	014770-622	18-6	Felt	1	147985-001		
7-3	Lower Shaft Gear	1		19-1	Rotary Hook	1		S-19 Rotary Hook Assembly 143986-101	
7-4	Screw 6.35 x 6	2	014770-622	19-2	Bobbin Case	1	107097-101		
8	Lower Shaft Bushing (Right)	1	141303-000	20	Bobbin	1	146025-001		
9	Lower Shaft Bushing (Front)	1	146355-001	21	Bobbin Spring	1	148054-001		
10	Collar	1	141304-001						
11	Screw 6.35 x 6	4	014770-622						

[NOTE! PREFIX ALL NUMBERS BY 'BR'.]
 [EXAMPLE BR009681-0-14]

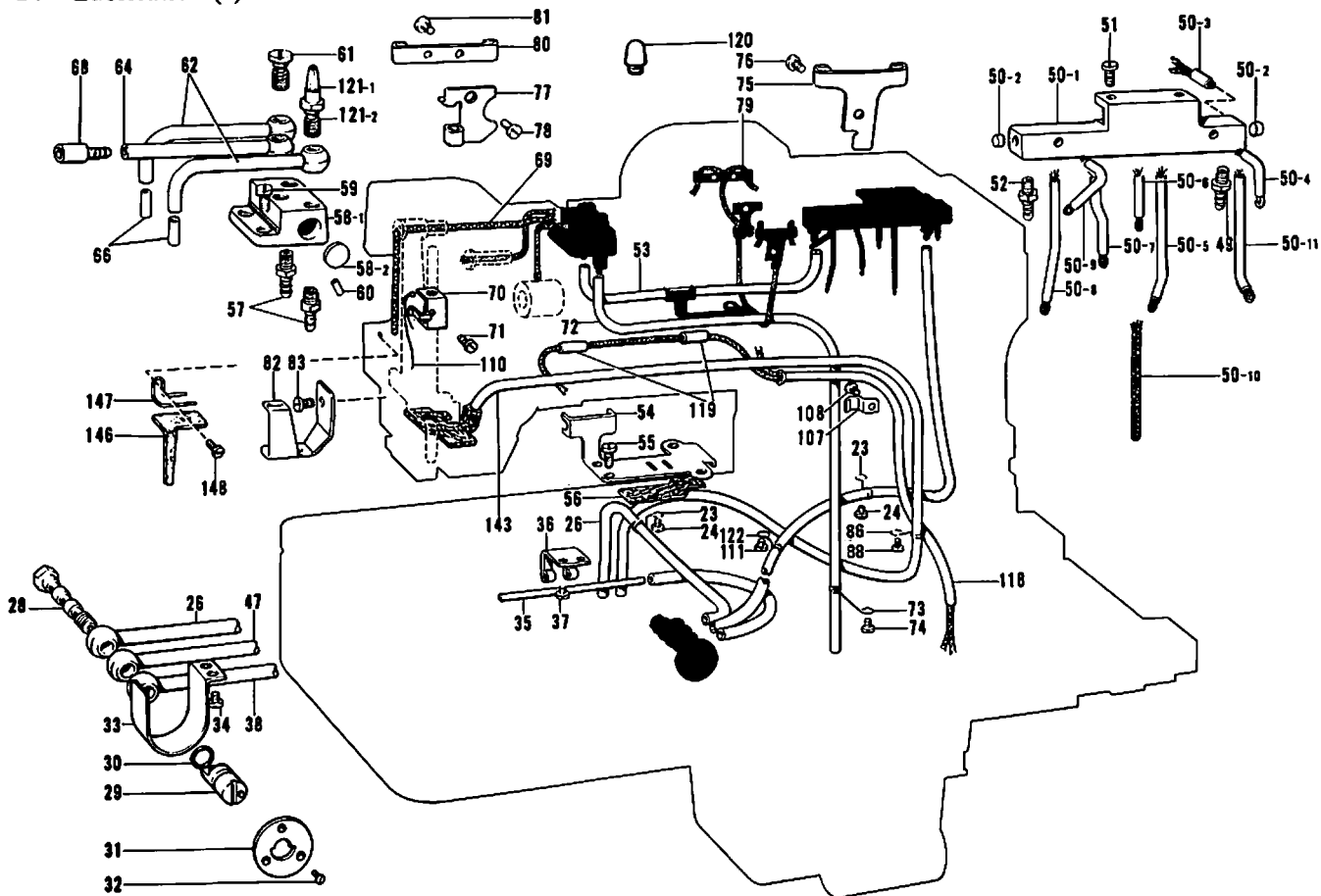
T. Lubrication (1)



Ref. No.	Name of Parts	Q'ty	Parts No.	Assembly No.	Ref. No.	Name of Parts	Q'ty	Parts No.	Assembly No.
1	V-Belt	1	141636-000		104	Oil Cap	1	116725-001	
2	Oil Pump Pulley	1	141637-000		105	Packing	1	141697-000	
3	Screw 6.35	2	100251-001		112	Oil Adjusting Stud	1	142408-001	
4	Pump Pulley Shaft	1	143982-001		113	Oil Adjusting Knob	1	142582-001	
5	Bushing	1	142766-001		114	Screw 4.37	2	151602-002	
6	Screw 5.95 x 6	1	014760-622		115	Felt	1	117598-001	
15	Washer	1	107153-001		116	Clip	1	116795-000	
17-1-1	Pump Shaft Gear	1		T-17-1 Pump Shaft Gear Assembly 143916-001	117	Packing	1	114294-001	
17-1-2	Screw 6.35 x 6	2	014770-622		124	Tube Stopper	1	116975-001	
17-2-1	Lower Shaft Gear	1		T-17-2 Pump Shaft Gear Assembly 180515-001	125	Screw 3.57 x 6	1	001670-614	
17-2-2	Screw 6.35 x 6	2	014770-622		126	Oil Cap	1	108520-001	
18	Bushing (Front)	1	143983-001		127	Oil Filter Assembly	1	146209-001	
20	Oil Feeding Pipe	2	142359-001		128	Oil Plate	1	147226-001	
21	Vinyl Tube	2	141647-000		129-1	Pump Belt Tension Lever	1		T-129 Pump Belt Tension Lever Assembly 147223-001
22	Nut	1	142750-001		129-3	Pump Belt Tension Roller Stud	1		
25	Oil Feeding Pipe	1	142748-001		129-4	Stop Ring E6	1	048060-342	
40	Collar	1	109183-001		129-5	Bearing 697ZZ	1		
41	Screw 3.57 x 7	2	013670-712		130	Screw 5.95 x 12	1	009761-212	
42	Oil Adjusting Case	1	142407-001		131	Washer 6	1	025060-232	
43	Ratchet	1	109862-001		133-1	Pump Body	1		T-133 Pump Assembly 148761-001
44	Screw 3.57 x 5	2	009670-512		133-2	Oil Pump Outer Rotor	1	141642-000	
45	Oil Cap	1	104833-001		133-3	Oil Pump Inner Rotor	1	141643-000	
89	Screw 4.37 x 7	3	009680-712		133-4	Pump Shaft	1	148469-001	
90	Oil Gauge Flange	1	151074-001		133-5	Pump Cap Plate	1	148470-001	
91	Screw 3.57	4	100257-010		133-6	Screw 3.57	1	145465-001	
92	Oil Gauge Window	1	141696-001		133-7	Plunger	1	148471-001	
93	Packing PW14	1	081014-670		133-8	Spring	1	144876-001	
94	Screw 9.52	1	110641-002		133-9	Screw 6.35	1	112467-002	
95	Packing	1	109203-001		141	Screw 4.76 x 14	3	009711-412	
96	Oil Cap	3	104449-001		144	Nut	1	142750-002	
99	Oil Cap	2	104821-001		145	Oil Feeding Pipe	1	142748-002	
102	Oil Cap	2	104450-001		149	Packing	1	141697-000	
					150	Wick	1	183120-000	
					151	Oil Cap	2	158437-001	

[NOTE! PREFIX ALL NUMBERS BY 'BR'.]
 EXAMPLE BR009681-0-14

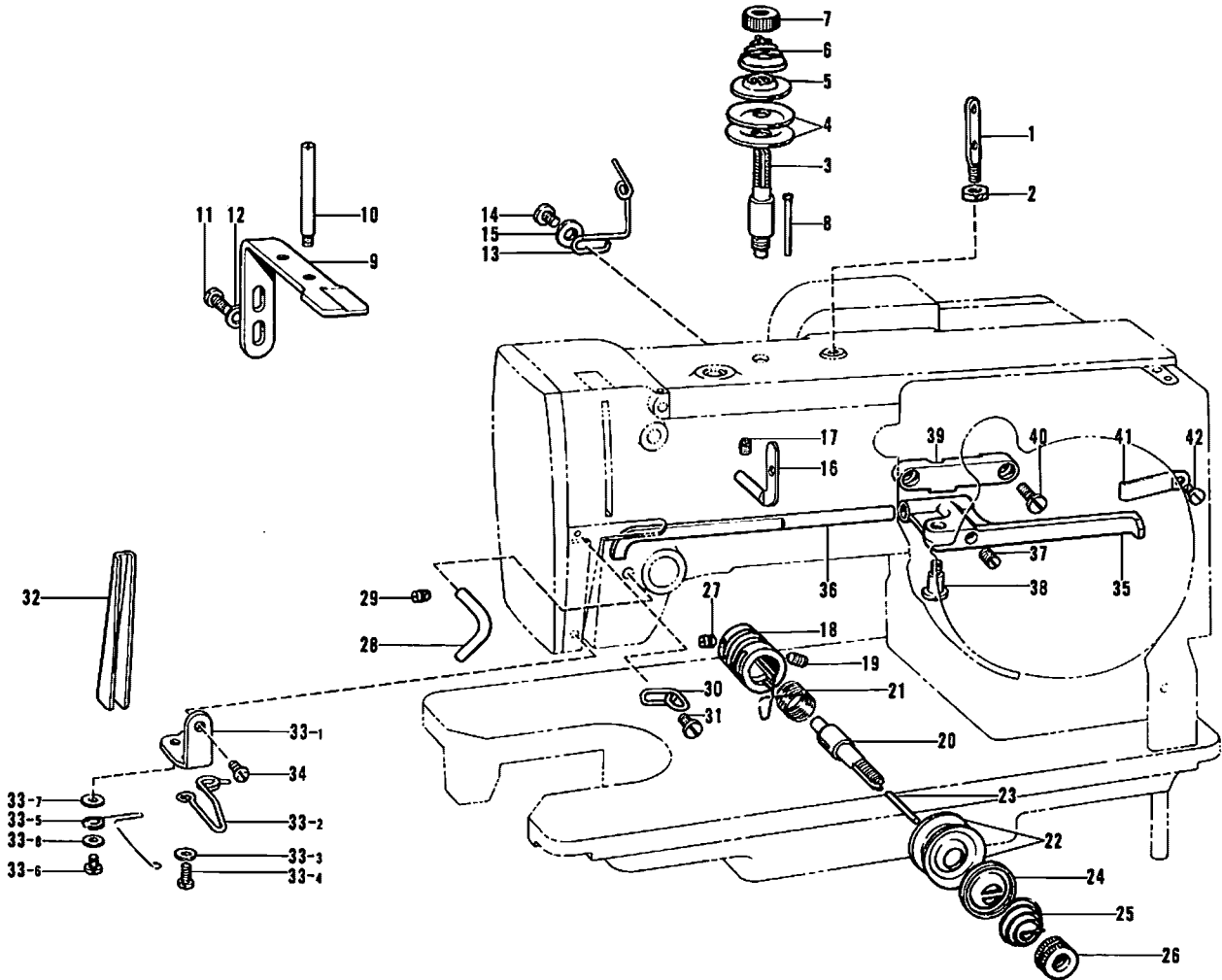
T. Lubrication (2)



Ref. No.	Name of Parts	Q'ty	Parts No.	Assembly No.	Ref. No.	Name of Parts	Q'ty	Parts No.	Assembly No.
23	Tube Stopper	2	112744-001		60	Pin AW 1.6	1	047161-042	
24	Screw 3.57 x 5	2	009670-512		61	Screw	2	112359-001	
26	Vinyl Tube Assembly	1	142351-001		62	Vinyl Tube Assembly	2	142354-001	
28	Oil Feeding Pipe	1	141651-001		64	Vinyl Tube Assembly	1	142355-001	
29	Oil Adjusting Bracket	1	141652-001		66	Vinyl Tube (B)	2	141679-001	
30	Packing	1	104564-001		68	Oil Feeding Pipe (B)	1	141680-001	
31	Cap Plate	1	141653-001		69	Wick	1	141681-000	
32	Screw 3.57	3	102538-002		70	Wick Holder	1	141682-001	
33	Cover	1	141654-001		71	Screw 3.18 x 4.5	1	009669-412	
34	Screw 3.57 x 6	2	009670-612		72	Vinyl Tube	1	141683-000	
35	Oil Pipe for Rotary Hook	1	141655-000		73	Tube Stopper	1	116975-001	
36	Tube Holder	1	141656-001		74	Screw 3.57 x 5	1	009670-512	
37	Screw 3.57 x 6	2	009670-612		75	Wick Holder (A)	1	141685-001	
38	Vinyl Tube Assembly	1	142352-001		76	Screw 4.37 x 6	1	009680-612	
47	Vinyl tube Assembly	1	142353-001		77	Wick Holder (B)	1	141686-001	
49	Oil Feeding Pipe	1	142359-001		78	Screw 4.37 x 6	1	009680-612	
50- 1	Wick Base (B)	1			79	Wick	2	141687-000	
50- 2	Oil Cap	2	110104-000		80	Wick Holder (C)	1	141688-001	
50- 3	Oil Tube (A)	1	141663-001		81	Screw 3.57	2	100242-003	
50- 4	Oil Tube (B)	1	141664-001		82	Wick Holder (D)	1	141689-001	
50- 5	Oil Tube (C)	1	141665-001	T-50 Wick Base Assembly 141661-001	83	Screw 4.37	1	107419-002	
50- 6	Oil Pipe	1	116968-001		86	Tube Stopper	1	141692-001	
50- 7	Oil Tube (E)	1	141666-001		88	Screw 3.57 x 5	1	009670-512	
50- 8	Oil Tube (F)	1	141667-001		107	Tube Holder	1	142268-001	
50- 9	Oil Tube (G)	1	141668-001		108	Screw 3.57 x 5	1	009670-512	
50-10	Wick	1	141669-000		110	Wick	1	142298-000	
50-11	Oil Tube (H)	1	150396-001		111	Screw 3.57 x 5	1	009670-512	
51	Screw 3.57 x 8	2	009670-812		118	Vinyl Tube	1	142742-000	
52	Oil Feeding Pipe	1	142359-001		119	Vinyl Tube	2	120774-001	
53	Vinyl Tube	1	141670-000		120	Oil Gauge Window	1	143713-001	
54	Vinyl Tube Holder	1	141671-001		121- 1	Pipe for Oil Gauge Window	1	143715-001	T-121 Oil Gauge Window Pipe Assembly 143714-001
55	Screw 3.57 x 8	2	009670-812		121- 2	Screw	1	143716-001	
56	Felt	1	141672-000		122	Tube Holder	1	112743-001	
57	Oil Feeding Pipe	2	142359-001		143	Vinyl Tube Assembly	1	148472-001	
58- 1	Wick Base (A)	1		T-58 Wick Base Assembly 142413-001	146	Felt	1	148745-000	
58- 2	Cap	1	141674-001		147	Felt Presser Spring	1	148746-001	
59	Screw 3.57 x 8	2	009670-812		148	Screw 4.37 x 6	1	009680-612	

[NOTE! PREFIX ALL NUMBERS BY 'BR.']
 [EXAMPLE BR009681-0-14]

U. Threading mechanism (1)

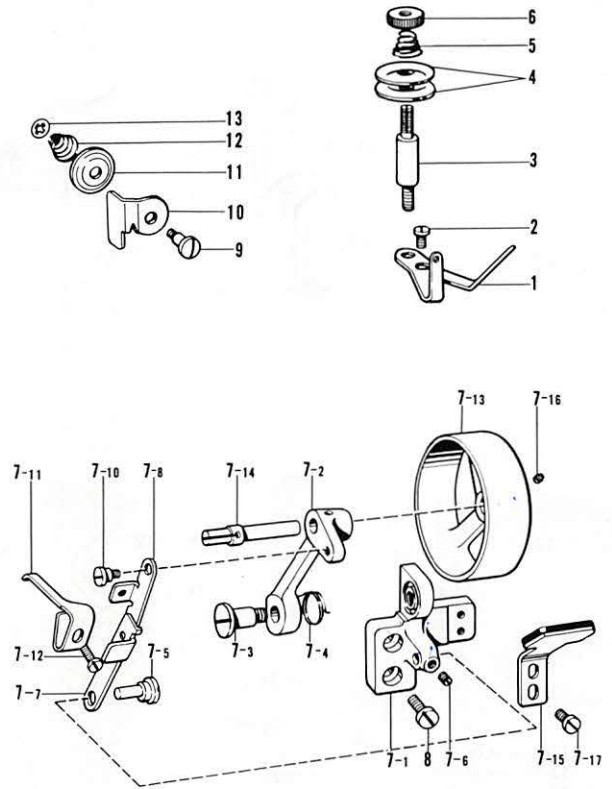
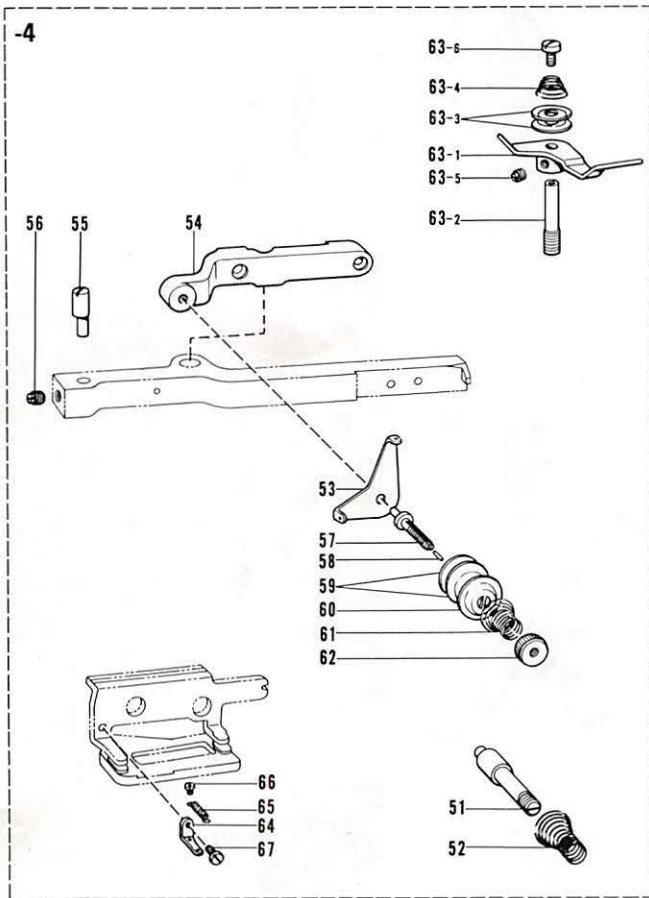


Ref. No.	Name of Parts	Q'ty	Parts No.	Assembly No.	Ref. No.	Name of Parts	Q'ty	Parts No.	Assembly No.
1	Thread Retainer (Upper)	1	141590-001		26	Tension Control Nut	1	100136-001	
2	Nut 5.95	1	150553-003		27	Screw 3.57	1	100402-004	
3	Upper Tension Stud	1	107602-001		28	Tension Thread Guide	1	142733-001	
4	Tension Disc	2	145446-001		29	Screw 4.76 x 10	1	013711-010	
5	Presser for Tension Disc	1	159805-001		30	Arm Thread Guide (Upper)	2	142735-001	
6	Tension Spring	1	117215-001		31	Screw 3.57	2	112751-003	
7	Tension Control Nut	1	100136-001		32	Thread Guide	1	141594-001	
8	Tension Release Pin	1	107612-001		33-1	Sub Tension Plate	1		U-33 Sub Tension Assembly 148831-001
9	Upper Tension Releaser	1	145673-001		33-2	Sub Tension Thread Guide	1		
10	Thread Guide Pin	1	141592-001		33-3	Washer	1		
11	Screw 4.37 x 8	2	009680-812		33-4	Screw 3.57 x 6	1		
12	Washer 4.37	2	025680-232		33-5	Spring	1	148058-001	
13	Thread Guide	1	141593-001		33-6	Screw 3.57 x 3.5	1		
14	Screw 4.37	1	100644-005		33-7	Washer 3.6	1		
15	Washer 4.37	1	025680-232		33-8	Washer 3.5	1		
16	Thread Retainer	1	145961-001		34	Screw 3.57 x 5	1	001670-512	
17	Screw 4.37	1	151602-002		35	Thread Release Lever	1	141596-002	
18	Upper Tension Regulator Bracket	1	144741-001		36	Thread Release Shaft	1	141597-001	
19	Screw 5.95	1	103950-002		37	Screw 5.95	1	151604-002	
20	Tension Stud	1	100398-001		38	Screw 4.76	1	141598-001	
21	Thread Take-up Spring	1	100399-001		39	Thread Release Lever Bracket	1	141599-002	
22	Tension Disc	2	145446-001		40	Screw 4.37 x 10	2	009681-012	
23	Tension Release Pin	1	100400-000		41	Spring Plate	1	142258-001	
24	Presser for Tension Disc	1	159805-001		42	Screw 3.57 x 5	1	009670-512	
25	Tension Spring	1	107606-001						

[NOTE! PREFIX ALL NUMBERS BY 'BR'.]
 EXAMPLE BR009681-0-14

U. Threading mechanism (2)

V. Bobbin winder

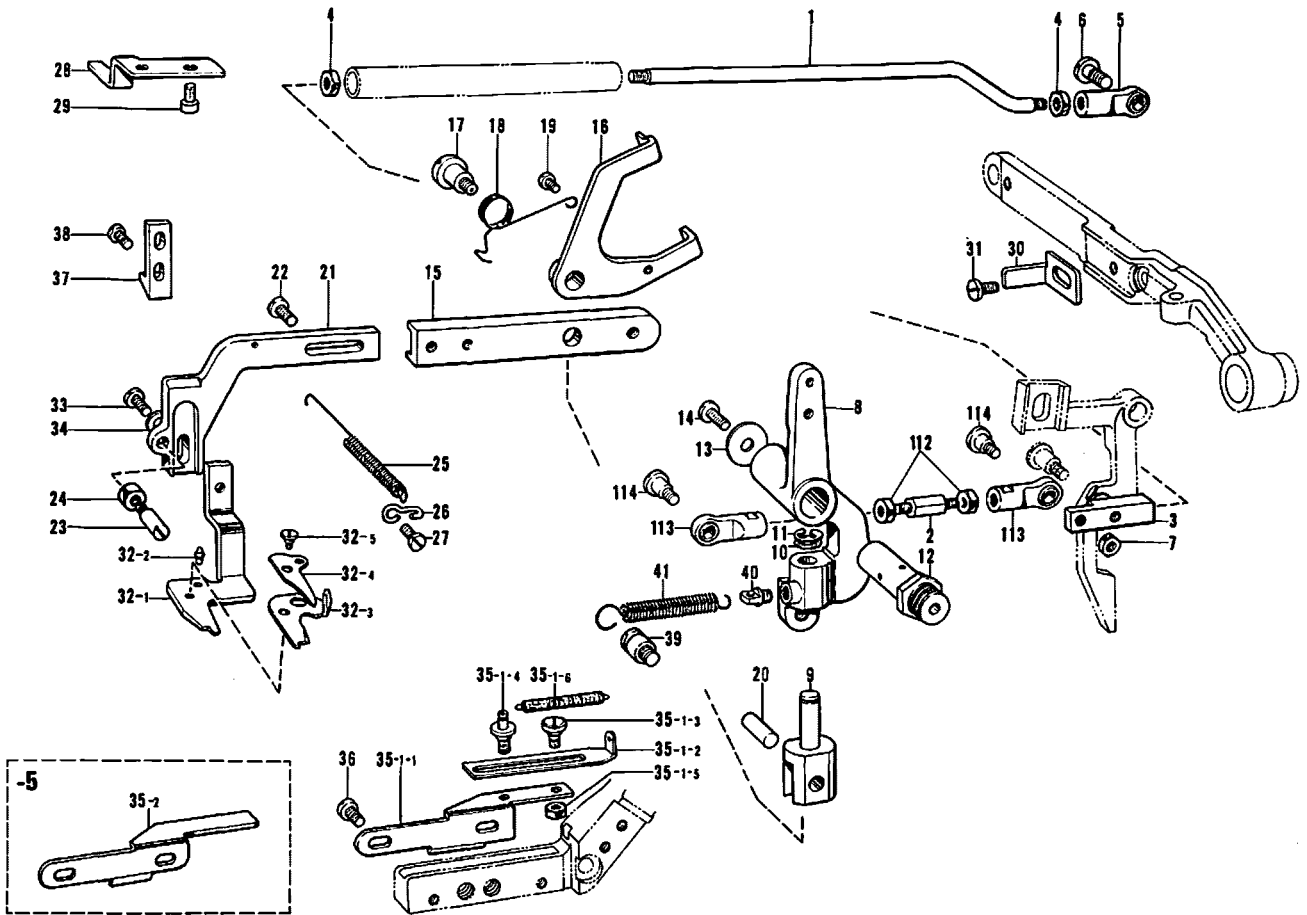


Ref. No.	Name of Parts	Q'ty	Parts No.	Assembly No.
51	Tension Stud	1	145437-001	
52	Tension Spring	1	115958-001	
53	Needle Thread Guide Plate	1	110813-001	
54	Gimp Tension Bracket	1	145438-002	
55	Gimp Release Pin	1	145439-001	
56	Screw 4.37	1	151601-002	
57	Tension Stud	1	145440-001	
58	Pin	1	105423-001	
59	Tension Disc	2	145446-001	
60	Presser for Tension Disc	1	159805-001	
61	Tension Spring	1	115958-001	
62	Tension Control Nut	1	100136-001	
63-1	Pre-Tension Body	1	145724-001	U-63 Pre-Tension Assembly 145723-001
63-2	Pre-Tension Shaft	1	145725-001	
63-3	Thread Guide Disc	2	144504-001	
63-4	Spring	1	144505-000	
63-5	Screw	1	102716-003	
63-6	Screw 3.18 x 5	1	001660-513	
64	Gimp Stopper	1	145991-001	
65	Spring	1	511091-001	
66	Screw 2.38	2	122771-002	
67	Screw 3.18 x 4.5	1	009669-412	

[NOTE! PREFIX ALL NUMBERS BY 'BR'.]
EXAMPLE BR009681-0-14

Ref. No.	Name of Parts	Q'ty	Parts No.	Assembly No.
1	Bobbin Winder Thread Guide	1	141600-001	
2	Screw 4.37	1	107407-003	
3	Stud	1	107678-001	
4	Disc	2	107680-001	
5	Spring	1	107681-001	
6	Tension Control Nut	1	107682-001	
7- 1	Bobbin Winder Bracket	1	141602-002	V-7 Bobbin Winder Assembly 141601-002
7- 2	Bobbin Winder Arm	1	141603-002	
7- 3	Screw 6.35	1	141604-001	
7- 4	Spring	1	142259-001	
7- 5	Stud	1	141605-001	
7- 6	Screw 3.57	1	013679-412	
7- 7	Bobbin Winder Link (A)	1	141606-001	
7- 8	Bobbin Winder Link (B)	1	141607-001	
7-10	Screw 3.18	1	100659-001	
7-11	Bobbin Presser	1	141608-001	
7-12	Screw	1	507142-002	
7-13	Bobbin Winder Wheel	1	141609-002	
7-14	Bobbin Winder Shaft	1	141610-001	
7-15	Bobbin Winder Brake	1	141611-001	
7-16	Screw 4.37	1	151601-002	
7-17	Screw 4.37 x 7	2	009680-712	
8	Screw 5.95 x 12	2	009761-212	
9	Screw 4.37	1	118764-002	
10	Knife	1	146198-001	
11	Disc	1	146199-001	
12	Spring	1	144505-000	
13	Stop Ring CS4	1	146200-001	

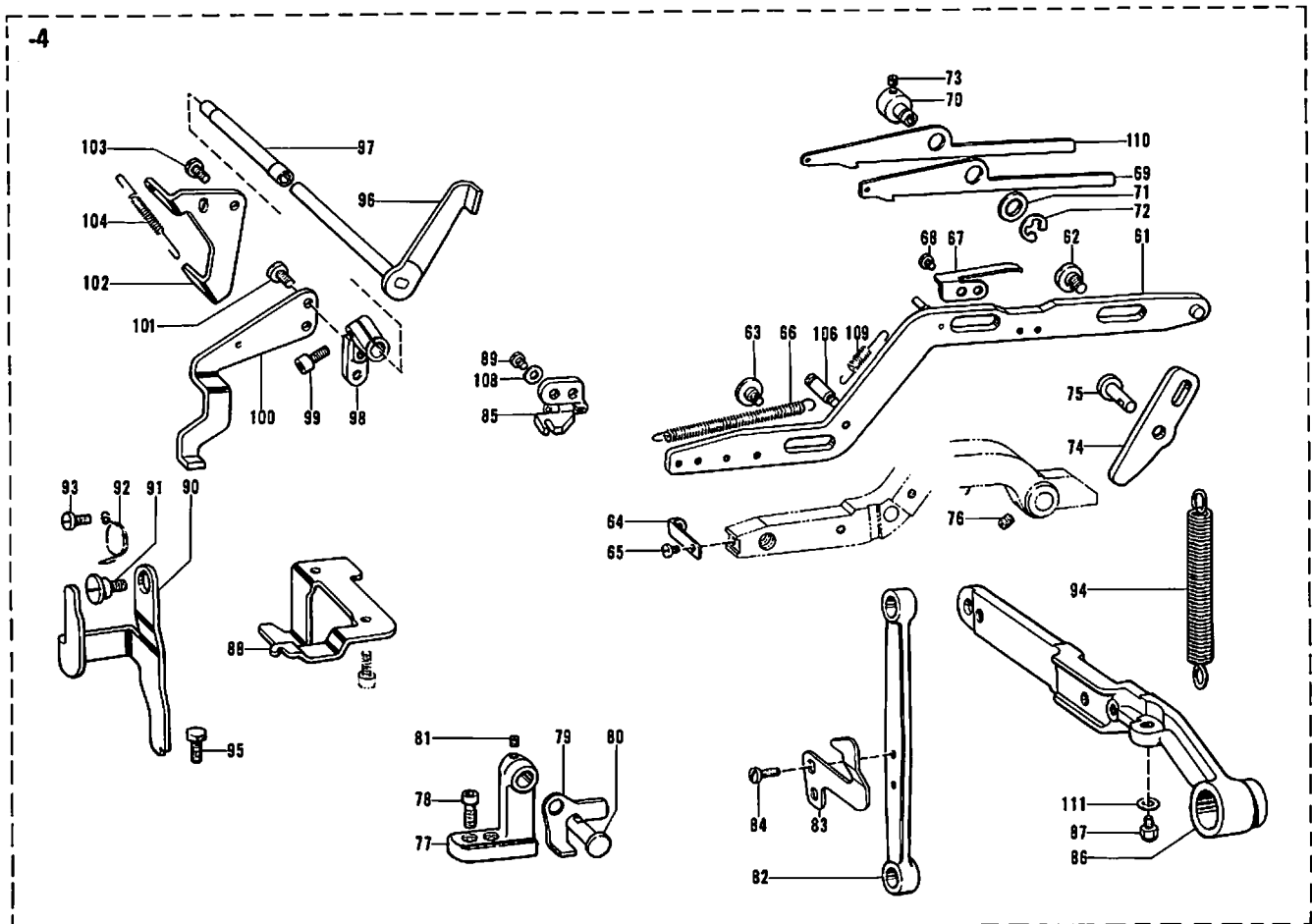
W. Upper Thread Trimmer mechanism (1)



Ref. No.	Name of Parts	Q'ty	Parts No.	Assembly No.	Ref. No.	Name of Parts	Q'ty	Parts No.	Assembly No.
1	Upper Thread Trimming Connecting Bar (L)	1	141489-001		27	Screw 4.37 x 7	1	009680-712	
2	Upper Thread Trimming Connecting Bar (S)	1	141490-001		28	Stopper Plate	1	141507-001	
					29	Bolt 4 x 8	2	018400-822	
3	Upper Thread Trimming Connecting Block	1	141491-001		30	Upper Thread Trimming Detach Plate	1	141508-001	
					31	Screw 4.37	1	107407-003	
4	Nut 5.95	2	100022-005		32-1	Upper Thread Lower Blade	1		W-32 Upper Thread Trimming Assembly 141509-001
5	Joint	1	141492-001		32-2	Stopper Pin	1	141511-001	
6	Screw	1	141494-001		32-3	Upper Thread Middle Blade	1	141512-001	
7	Nut 5.95	1	100022-005		32-4	Upper Thread Upper Blade	1	141513-001	
8	Upper Thread Trimming Lever Holder	1	147565-001		32-5	Screw	1	141514-001	
9	Hinge	1	141496-001		33	Screw 4.76 x 8	1	009710-812	
10	Washer	1	100281-001		34	Washer 4.76	1	025710-232	
11	Stop Ring E6	1	048060-342		35-1-1	Thread Scissor Guide	1	141515-001	W-35-1 Thread Scissor Guard Supporter 145999-001
12	Connecting Shaft	1	141463-001		35-1-2	Thread Trimming Supporter	1	146000-001	
13	Washer	1	149095-001		35-1-3	Screw 3.18	1	146001-001	
14	Screw 5.95 x 12	1	009761-212		35-1-4	Screw 3.18	1	146002-001	
15	Upper Thread Trimming Lever (A)	1	141497-001		35-1-5	Nut 3.18	2	021660-102	
16	Lever Driving Positioner	1	145998-001		35-1-6	Spring	1	118352-001	
17	Screw 4.76	1	141499-001		35-2	Thread Scissor Guide	1	147558-001	
18	Spring	1	141500-001		36	Screw 4.37 x 7	2	009680-712	
19	Screw 3.57 x 4	1	009670-412		37	Upper Thread Trimming Cam	1	141516-001	
20	Pin	1	141501-001		38	Screw 4.37 x 10	2	009681-012	
21	Upper Thread Trimming Lever (B)	1	141502-001		39	Spring Hook	1	141472-002	
22	Screw 4.37	2	107407-003		40	Spring Hook	1	107639-001	
23	Screw	1	141504-001		41	Spring	1	141517-001	
24	Nut 4.76	1	110161-004		112	Nut 5.95	2	100022-005	
25	Spring	1	141505-001		113	Joint	2	141492-001	
26	Spring Hook	1	141506-001		114	Screw	2	141494-001	

[NOTE! PREFIX ALL NUMBERS BY 'BR'.]
 [EXAMPLE BR009681-0-14]

W. Upper Thread Trimmer mechanism (2)

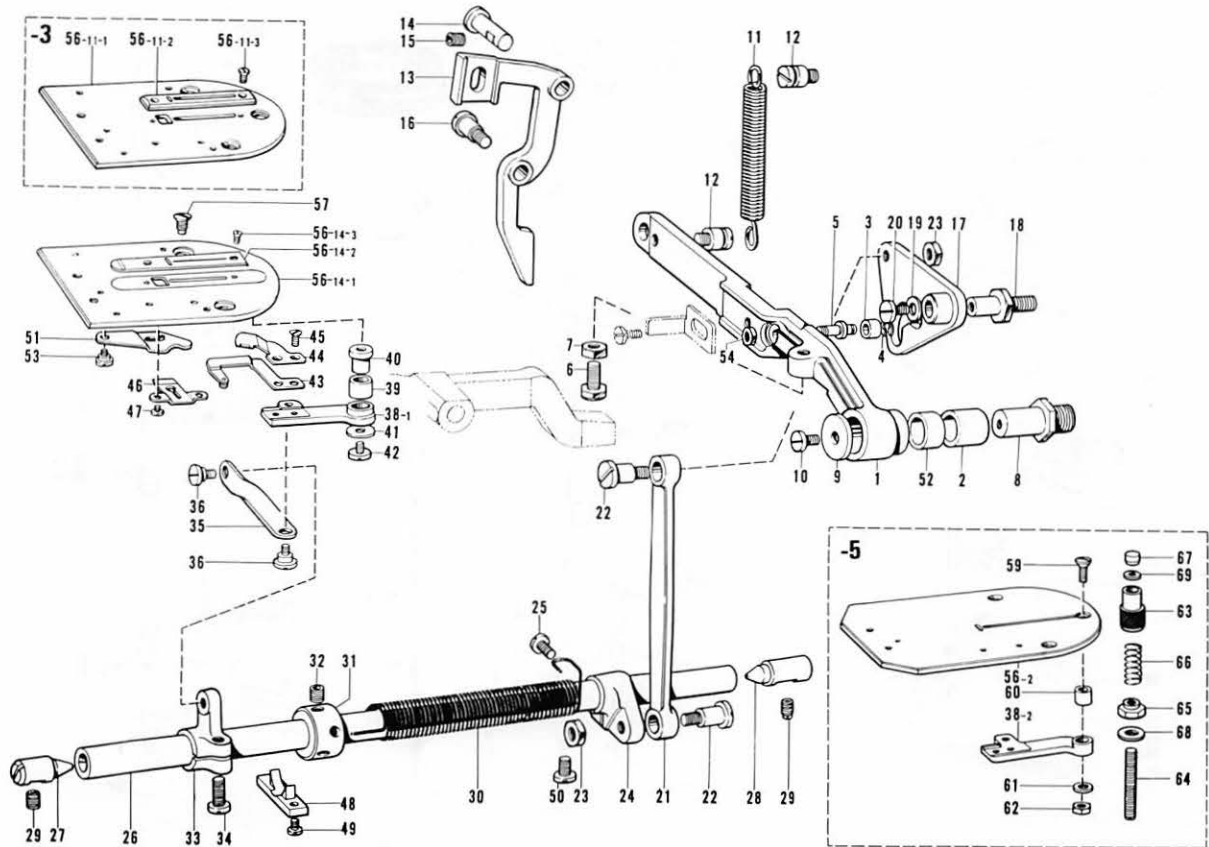


Ref. No.	Name of Parts	Q'ty	Parts No.	Assembly No.	Ref. No.	Name of Parts	Q'ty	Parts No.	Assembly No.
61	Gimp Trimming Connector	1	145407-001		86	Clamping Foot Lifter Lever	1	145426-002	
62	Screw 5.95	2	118244-001		87	Bolt 7.94	1	145427-001	
63	Screw 4.37	1	116755-001		88	Stopper	1	145428-001	
64	Spring Hook	1	145411-001		89	Screw 4.37 x 6	2	009680-612	
65	Screw 4.37 x 4.5	1	009689-412		90	Stopper	1	145429-001	
66	Spring	1	145412-001		91	Screw 4.37	1	116755-001	
67	Spring	1	145413-001		92	Spring	1	145430-001	
68	Screw 3.18 x 5	2	001660-512		93	Screw 4.37 x 6	1	009680-612	
69	Gimp Trimming Set Plate	1	145415-001		94	Spring	1	145431-001	
70	Stud	1	145416-001		95	Bolt 4.37 x 10	1	017681-012	
71	Washer	1	100197-002		96	Thread Trimming Detach Lever	1	145433-001	
72	Stop Ring E6	1	048060-342		97	Bushing	1	145434-001	
73	Screw 4.37	1	151601-002		98	Detach Lever Holder	1	145435-001	
74	Gimp Trimming Arm	1	145417-001		99	Bolt 4 x 8	1	018400-822	
75	Stud	1	143788-001		100	Gimp Trimming Detach Lever	1	145414-001	
76	Screw 6.35 x 6	1	014770-622		101	Screw 4.37	2	100644-005	
77	Gimp Pulling Bracket	1	145418-002		102	Stopper	1	145436-001	
78	Bolt 4 x 16	2	018401-622		103	Screw 3.57 x 8	2	001670-812	
79	Gimp Trimming Link	1	145419-001		104	Spring	1	113897-001	
80	Stud	1	143788-001		106	Spring Hook	1	107657-001	
81	Screw 4.37	1	151601-002		108	Washer	2	100645-003	
82	Lower Thread Trimming Connecting	1	145420-001		109	Spring	1	113897-001	
83	Gimp Pulling Plate	1	145421-001		110	Gimp Trimming Safety Plate	1	145983-001	
84	Screw 4.37	2	107407-003		111	Washer 8	2	025080-132	
85	Gimp Trimming Bracket	1	145732-001						

[NOTE! PREFIX ALL NUMBERS BY 'BR'.]
 EXAMPLE BR009681-0-14

From the library of: Diamond Needle Corp

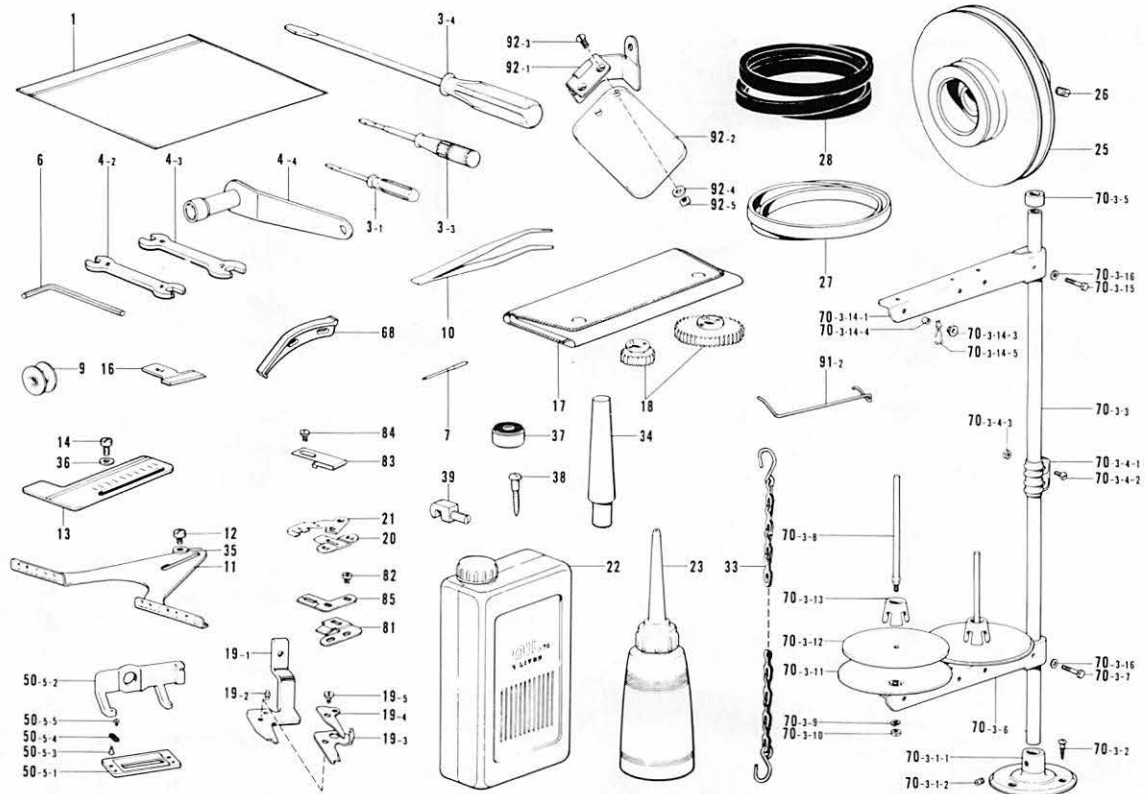
X. Lower Thread Trimmer mechanism



Ref. No.	Name of Parts	Q'ty	Parts No.	Assembly No.	Ref. No.	Name of Parts	Q'ty	Parts No.	Assembly No.
1	Lower Thread Cutter Lever	1	141518-002		36	Screw 4.76	2	141535-001	
2	Bushing	1	142372-000		38-1	Knife Setting Plate	1	141537-001	
3	Roller	1	107744-001		38-2	Knife Setting Plate	1	147235-001	
4	Stop Ring E3	1	048030-342		39	Bushing (A)	1	141538-001	
5	Roller Shaft	1	141519-001		40	Bushing (B)	1	141539-001	
6	Bolt 7.94	1	115585-001		41	Washer	1	512769-001	
7	Nut 7.94	1	152997-001		42	Screw 3.57	1	105451-001	
8	Lower Thread Trimming Lever Shaft	1	141520-001		43	Lower Thread Release Plate	1	142416-001	
9	Washer	1	149095-001		44	Movable Knife	1	141541-001	
10	Screw 5.95 x 10	1	009761-012		45	Screw 3.18	2	141542-001	
11	Spring	1	141521-001		46	Fixed Knife	1	141543-001	
12	Spring Hook	2	141472-002		47	Screw 3.18	2	141544-001	
13	Lower Thread Trimming Safety Stopper	1	141522-001		48	Shaft Supporter	1	141545-001	
14	Stud	1	143788-001		49	Screw 3.57 x 6	2	009670-612	
15	Screw 5.95 x 6	1	014760-622		50	Screw 5.95 x 12	1	009761-212	
16	Screw 5.95	1	115493-002		51	Lower Thread Releaser	1	142419-001	
17	Lower Thread Trimming Cam	1	141523-001		52	Bushing	1	142373-000	
18	Lower Thread Trimming Cam Shaft	1	141526-001		53	Screw 3.18	1	142420-001	
19	Washer 5	1	025050-232		54	Nut 4.76	1	110161-004	
20	Screw 4.37	1	106629-002		56-2	Throat Plate 50	1	147234-001	
21	Lower Thread Trimming Connecting Link	1	141527-001		56-11-1	Base Plate	1	144634-001	X-56-11 Throat Plate Assembly 1.2
22	Screw 6.35	2	141528-001		56-11-2	Throat Plate 1.2	1	144635-001	144633-001
23	Nut 6.35	2	150556-001		56-11-3	Screw 2.38	2	111073-001	
24	Lower Thread Trimming Shaft Arm	1	141529-000		56-14-1	Base Plate	1	145245-001	X-56-14 Throat Plate Assembly 145244-001
25	Screw 4.37 x 12	1	009681-212		56-14-2	Throat Plate	1	145246-001	
26	Lower Thread Trimming Shaft	1	141530-001		56-14-3	Screw 2.38	2	145247-001	
27	Taper Center (Left)	1	104847-001		57	Screw 4.37	2	100032-004	
28	Taper Center (Right)	1	104848-001		59	Screw 4.37	1	105955-002	
29	Screw 5.95	2	151605-002		60	Bushing	1	147236-001	
30	Spring	1	141531-001		61	Washer	1	140025-002	
31	Collar	1	141532-001		62	Nut 4.37	1	102571-003	
32	Screw 6.35 x 6	2	014770-622		63	Lever Stopper	1	143394-001	
33	Lower Thread Trimming Shaft Arm (B)	1	141533-001		64	Screw 7.94	1	140649-001	
34	Screw 5.56 x 16	1	009751-612		65	Nut	1	140650-001	
35	Link	1	141534-001		66	Spring	1	140651-001	
					67	Cushion	1	146011-001	
					68	Washer 8	1	025080-132	
					69	Washer	1	111920-000	

[NOTE! PREFIX ALL NUMBERS BY 'BR'.]
[EXAMPLE BR009681-0-14]

Z. Accessories mechanism (1)

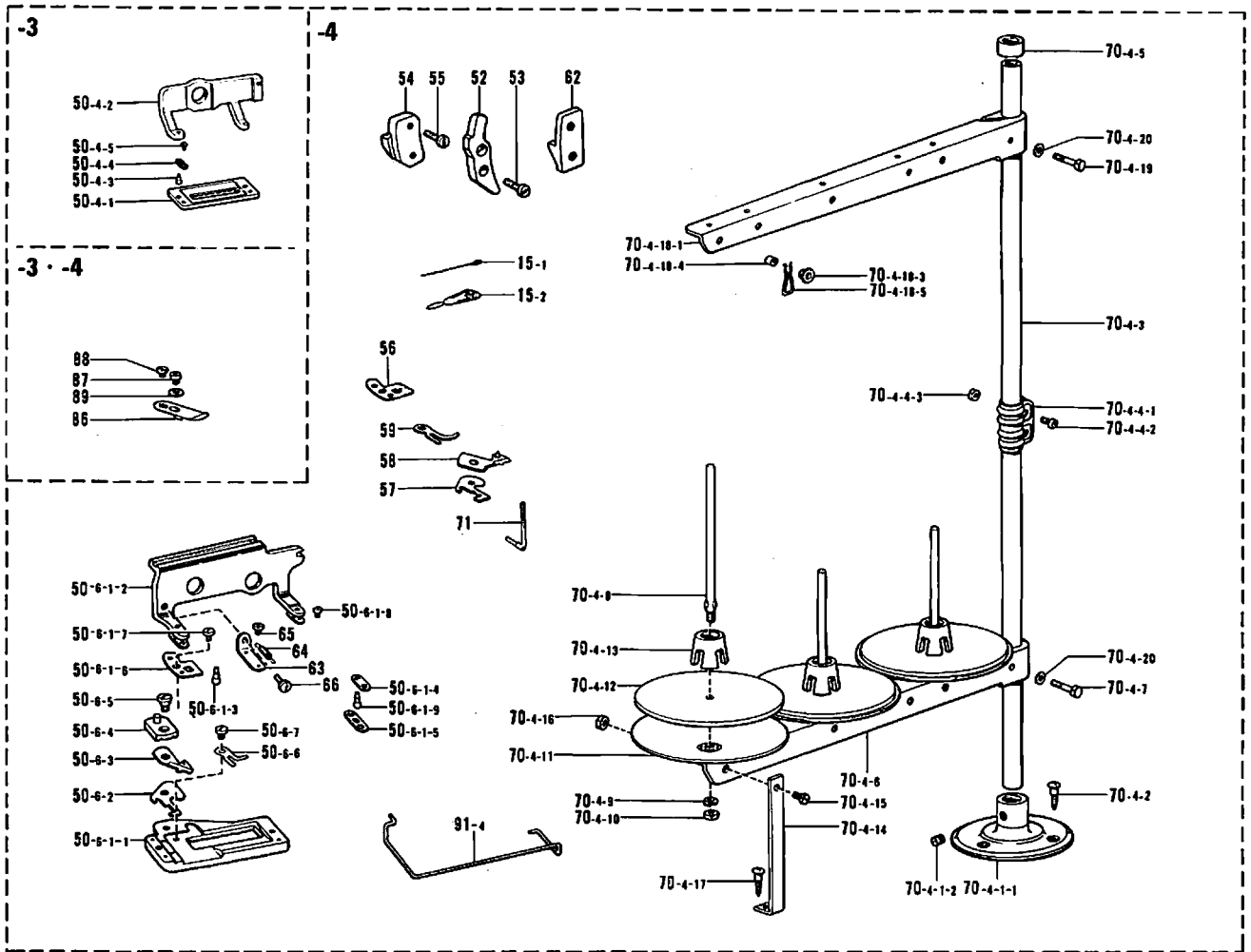


Ref. No.	Name of Parts	Q'ty	Parts No.	Assembly No.	Ref. No.	Name of Parts	Q'ty	Parts No.	Assembly No.
1	Vinyl Bag	1	122991-002		50-5- 1	Upper Clamping Foot	1	144575-001	Z-50-5 Upper Clamping Foot Assembly 150765-001
3-1	Screw Driver 1.9 x 52	1	142443-001		50-5- 2	Upper Clamping Foot Supporter	1		
3-3	Screw Driver 3.4 x 70	1	118837-001		50-5- 3	Pin	2	144496-001	
3-4	Screw Driver 5.5 x 190	1	101572-101		50-5- 4	Spring	2	107401-001	
4-2	Wrench 8 x 9	1	100887-001		50-5- 5	Screw 1.98	2	107404-001	
4-3	Wrench 10 x 12	1	107780-001		70-3- 1-1	Thread Unwinder	1	150189-001	Z-70-3-1 Thread Unwinder Base Assembly 150139-001
4-4	Box Spanner 12	1	143949-001		70-3- 1-2	Screw 6 x 7	2	150181-101	
6	Spanner 3	1	142721-001		70-3- 2	Screw 4.5 x 22	3	031452-203	Z-70-3-4 Joint Assembly 150106-001
7	Needle Cat. No. 1955-01	5	154483-0-		70-3- 3	Pipe	2	150172-001	
9	Bobbin	3	146025-001		70-3- 4-1	Joint	1	150173-001	
10	Tweezers	1	117466-000		70-3- 4-2	Screw 5 x 14	2	150202-001	
11	Ruler	1	141705-001		70-3- 4-3	Nut 5	2	021500-103	
12	Screw 4.37 x 5	2	009680-512		70-3- 5	Cap	1		Z-70-3 Thread Unwinder Assembly 150150-003
13	Ruler	1	147156-001		70-3- 6	Spool Holder 2	1	150178-001	
14	Screw 4.37 x 5	2	009680-512		70-3- 7	Bolt 5 x 28	1	017502-803	
16	Cutter	1			70-3- 8	Spool Shaft (B)	2	150179-001	
17	Change Gear Box		142745-002		70-3- 9	Washer 2-5	2	028050-243	
18	Gear	1			70-3- 10	Nut 5	2	021500-103	Z-70-3-14 Thread Hanger Assembly 150192-003
19-1	Upper Thread Lower Blade	1		Z-19 Upper Thread Trimming Assembly 141509-001	70-3- 11	Spool Stand Base	2	150180-000	
19-2	Stopper Pin	1	141511-000		70-3- 12	Spool Mat	2	150182-000	
19-3	Upper Thread Middle Blade	1	141512-001		70-3- 13	Spool Cushion	2	126863-000	
19-4	Upper Thread Upper Blade	1	141513-001		70-3- 14-1	Spool Holder 2	1	150178-001	
19-5	Screw	1	141514-001		70-3- 14-3	Thread Hanger	2		
20	Fixed Knife	1	141543-001		70-3- 14-4	Thread Bushing	2	142990-001	
21	Movable Knife	1	141541-001		70-3- 14-5	Thread Guide Spring	2	150184-001	
22	Oil Tank	1	145277-104		70-3- 15	Bolt 5 x 28	1	017502-803	Z-70-3-16 Washer 5
23	Oiler	1	114483-002		81	Tape Guard (Rear)	1	144998-001	
25	Pulley	1			82	Screw 2.38	2	105288-002	Z-92 Plastic Eye Guard Assembly 143971-001
26	Screw 5.95	2	151605-002		83	Tape Guard Front (A)	1	144997-001	
27	Belt	1	141711-000		84	Screw 2.38	2	122771-002	Z-92 Plastic Eye Guard Assembly 143971-001
28	V Belt	1	082104-		85	Tape Guide (Front)	1	144999-001	
33	Chain Assembly	2	149247-001		91-2	Finger Guard (L)	1	150563-000	Z-92 Plastic Eye Guard Assembly 143971-001
34	Head Rest	1	142005-000		92-1	Eye Guard Hinge Assembly	1		
35	Washer	2	116662-003		92-2	Eye Guard	1		
36	Washer 4.37	2	025680-232		92-3	Screw 3.18 x 7	2	005660-712	
37	Collar	4	146254-001		92-4	Washer 3	2	025030-232	
38	Screw 6.2 x 32	4	101125-000		92-5	Nut 3.18	2	021660-102	
39	Head Hinge	2	141256-001						
68	Stop Cam Segment (Small)	1	142734-001						

[NOTE! PREFIX ALL NUMBERS BY 'BR'.]
EXAMPLE BR009681-0-14

*The details of included accessories are subject to change.

Z. Accessories mechanism (2)



Ref. No.	Name of Parts	Q'ty	Parts No.	Assembly No.	Ref. No.	Name of Parts	Q'ty	Parts No.	Assembly No.
15-1	Threader	3	111507-000		66	Screw 3.18 x 4.5	1	009669-412	
15-2	Threader	3	103896-001		70-4-1-1	Thread Unwinder Base	1	150189-001	Z-70-4-1 Thread Unwinder Base Assembly 150139-001
50-4-1	Upper Clamping Foot	1	144632-001	Z-50-4 Upper Clamping Foot Assembly 150769-001	70-4-1-2	Screw 6 x 7	2	150181-101	
50-4-2	Upper Clamping Foot Supporter	1			70-4-2	Screw 4.5 x 22	3	031452-203	
50-4-3	Pin	2	144496-001		70-4-3	Pipe	2	150172-001	
50-4-4	Spring	2	144707-001		70-4-4-1	Joint	1	150173-001	Z-70-4-4 Joint Assembly 150106-001
50-4-5	Screw 1.98	2	107404-001		70-4-4-2	Screw 5 x 14	2	150202-001	
50-6-1-1	Upper Clamping Foot	1	145375-001	Z-50-6 Upper Clamping Foot Assembly 150771-001	70-4-4-3	Nut 5	2	021500-103	
50-6-1-2	Upper Clamping Foot Supporter	1			70-4-5	Cap	1		
50-6-1-3	Pin	1	144496-001		70-4-6	Spool Holder 3	1	150176-001	
50-6-1-4	Spring	1	107401-001		70-4-7	Bolt 5 x 28	1	017502-803	
50-6-1-5	Spring Plate	1	145365-001		70-4-8	Spool Shaft (B)	3	150179-001	
50-6-1-6	Thread Presser	1	145366-001		70-4-9	Washer 2-5	3	028050-243	
50-6-1-7	Screw 2.38	2	111105-001		70-4-10	Nut 5	3	021500-103	Z-70-4 Thread Unwinder Assembly 150151-003
50-6-1-8	Screw 1.98	1	107404-001		70-4-11	Spool Stand Base	3	150180-000	
50-6-1-9	Pin	1	146034-001		70-4-12	Spool Mat	3	150182-000	
50-6-2	Gimp Fixed Knife	1	145367-001		70-4-13	Spool Cushion	3	126863-000	
50-6-3	Gimp Trimming Knife	1	145731-001		70-4-14	Spool Holder Supporter (A)	1	150188-001	
50-6-4	Gimp Trimming Crank	1	145369-001		70-4-15	Screw 5 x 10	1	007501-003	
50-6-5	Screw 3.57	1	145370-001		70-4-16	Nut 5	1	021500-103	
50-6-6	Gimp Detach Lever	1	145373-001		70-4-17	Screw 4.5 x 22	1	031452-203	
50-6-7	Screw 2.38	1	145371-001		70-4-18-1	Spool Holder 3	1	150176-001	Z-70-4-18 Thread Hanger Assembly 150193-003
52	Stop Cam	1	145352-001		70-4-18-3	Thread Hanger	3		
53	Screw 4.37 x 8	2	009680-812		70-4-18-4	Thread Bushing	3	142990-001	
54	Cutter Cam	1	145353-001		70-4-18-5	Thread Guide Spring	3	150184-001	
55	Screw 4.37 x 10	2	009681-012		70-4-19	Bolt 5 x 28	1	017502-803	
56	Thread Presser	1	145366-001		70-4-20	Washer 5	2	025050-233	
57	Gimp Fixed Knife	1	145367-001		71	Gimp Guide Pipe	1	145380-001	
58	Gimp Trimming Knife	1	145731-001		86	Tape Guard Front (F)	1	144628-001	
59	Gimp Detach Lever	1	145373-001		87	Screw 2.38	1	122771-002	
62	Zigzag Cam	1	145350-001		88	Screw 2.38	1	105970-001	
63	Gimp Stopper	1	145991-001		89	Collar	1	110067-001	
64	Spring	1	511091-001		91-4	Finger Guard (L)	1	150567-000	
65	Screw 2.38	2	122771-002						

[NOTE! PREFIX ALL NUMBERS BY 'BR'.
EXAMPLE BR009681-0-14]

*The details of included accessories are subject to change.

DIFFERENT PARTS LIST

Ref. No.	Name of Parts	Sub-class	-2	-3	-4	-5
A-25	Oil Gauge Window		143985-001		145343-001	143985-001
A-35	Side Cover		154473-001		154474-001	154473-001
A-39	Gear Case Cap Assembly		154485-001		154486-001	154485-001
A-43	Cam Cover		141266-002		145339-002	141266-002
A-50	Gear Separation Plate		141269-001		145345-001	141269-001
A-64	Screw 3.57 x 5		001670-512		Q'ty 3	001670-512 Q'ty 2
A-65	Bed Cover (Left)		143742-001			
A-66	Bed Cover (Right)		143741-001			
A-67	Screw 4.37		107407-003			
A-68	Cover		143911-001			143911-001
A-69	Screw 4.37 x 6		009680-612			009680-612
A-71	Oil Cap				145342-001	
B- 5	Thread Take-up Lever Assembly		147650-101		145719-101	147650-101
B- 8	Needle Bar Assembly		141293-101		146075-001	141293-101
B- 9	Needle Cat. No. 1955-01		154483-014	154483-011	154483-014	
D-53	Zigzag Connecting Shaft		141359-001		Q'ty 2	141359-001 Q'ty 1
D-59	Stud				145344-001	
D-60	Bushing (Right)		141716-000		Q'ty 3	141716-000 Q'ty 3
D-61	Bushing (Left)		141365-000		Q'ty 3	141365-000 Q'ty 3
D-62	Collar		141366-001		Q'ty 3	141366-001 Q'ty 3
E- 3	Stop Cam Segment (B)		141547-001		145442-001	141547-001
K- 7	Presser Bar Roller Bracket Assembly		141455-001		145377-001	141455-001
L- 4	Feed Cam Assembly		143942-001		146336-001	143942-001
L-16	Length Feed Adjusting Lever		143739-002			147229-002
L-20	Length Feed Indicator Plate		143740-001		145359-001	
L-22- 1	Length Feed Indicator		141419-001			
L-22- 2	Washer 6					025060-332
L-26	Feed Lever (B) Assembly		141422-001		145445-001	147939-001
L-26- 4	Spring Pin Aw 4x8				047400-842	
L-31	Nut 5.95		118262-002			106588-003
L-34	Feed Guide Shaft Bracket		141427-002		145354-002	151583-002
L-43	Length Feed Arm		141433-002		145356-002	147228-002
L-44	Feed Arm Shaft		141434-001		145355-001	141434-001
L-47- 3	Upper Clamping Foot Assembly		150764-001			
L-47- 6	Upper Clamping Foot Assembly			150768-001		
L-47- 8	Upper Clamping Foot Assembly				150770-001	
L-47-12	Upper Clamping Foot Assembly					150766-001
L-49	Guide Plate		141440-001			147232-001
L-55	Stopper		144541-001			
L-59	Lower Feed Arm		143738-002			

Ref. No.	Name of Parts	Sub-class	-2	-3	-4	-5
L-60	Screw 4.37 x 20		009682-012			
L-61	Length Feed Plate		145248-001	144627-001	145357-001	
L-62	Bolt 4.37 x 10		017681-012			
L-63	Washer		113431-002			
L-64	Length Feed Guide Plate		143743-001		145358-001	
L-65	Screw 3.57		106568-003			
L-67	Washer		100645-003			
L-69	Pin				115120-001	
L-70	Finger Guard		150562-000		150566-000	150564-000
M- 7	Gear 26			141374-000		
M- 7	Gear 32					141377-000
M- 7	Gear 34		141378-000		141378-000	
M- 7	Gear 42		141382-000		141382-000	
M- 7	Gear 44					141383-000
M- 7	Gear 50			141386-000		
M-10	Handle Lever		141395-002			147559-002
N-40	Cutter 7/16			107204-001		
N-40	Cutter 1/2		107200-001			
N-40	Cutter 5/8				10705-001	
N-40	Cutter 48					147941-001
Q- 1	Gimp Guide Pipe				145380-001	
Q- 2	Screw 3.57				111443-001	
Q- 3	Gimp Guide Bar				145381-001	
Q- 4	Screw 4.37 x 5				100366-002	
Q- 5	Gimp Guide Bar Supporter				145382-001	
Q- 6	Screw 4.37				107407-003	
Q- 7	Gimp Guide Changing Plate Assembly				145383-001	
Q- 8	Screw 4.37				107407-003	
Q- 9	Gimp Guide Connector				145384-001	
Q-10	Gimp Guide Hinge				145385-001	
Q-11	Hinge Roller				145386-001	
Q-12	Washer				145387-001	
Q-13	Screw 4.76 x 12				009711-212	
Q-14	Spring				145692-001	
Q-15	Spring Hock				145388-001	
Q-16	Washer 4.37				025680-232	
Q-17	Screw				146316-001	
Q-18	Grimp Guide Pushing Plate				145392-001	
Q-19	Screw 4.37				107407-003	

Ref. No.	Sub-class Name of Parts	-2	-3	-4	-5
Q-20	Spring			146951-001	
Q-21	Spring Hook			107640-001	
Q-23	Gimp Guide Push Lever (A)			145394-001	
Q-24	Screw 6.35 x 6			014770-622	
Q-25	Push Lever Shaft			145395-001	
Q-26	Gimp Guide Push Lever (B)			151018-001	
Q-27	Bolt 4 x 12			018401-222	
Q-28	Lever (A)			145397-001	
Q-29	Lever (B)			145398-101	
Q-30	Bolt 4 x 8			018400-822	
Q-31	Shaft			145399-001	
Q-32	Gimp Guide Lever			145400-001	
Q-33	Screw 5.95			115493-002	
Q-34	Stopper			145401-001	
Q-35	Screw 4.37 x 8			009680-812	
Q-36	Gimp Guide Position Bracket			145402-002	
Q-37	Gimp Guide Positioner			145403-001	
Q-38	Screw 3.57 x 6			006170-612	
Q-39	Position Supporter			145404-001	
Q-40	Screw 3.57			102850-002	
Q-41	Screw			145405-001	
Q-42	Lever Supporter			145406-001	
Q-43	Screw 3.57 x 8			009670-812	
R- 1	Tape Window Assembly		154500-001		
R- 2	Tape Guide Lower		143749-001		
R- 3	Tape Guide Upper		143748-001		
R- 4	Screw 3.18 x 4		009660-412		
R- 9	Screw 4.37		107407-003		
R-16	Tape Guide			145441-001	
R-17	Screw 3.18 x 4			009660-412	
U- 1	Thread Retainer (Upper)	141590-001			141590-001
U-20	Tension Stud	100398-001			100398-001
U-23	Tension Release Pin	100400-000			100400-000
U-24	Presser for Tension Disc	159805-001			159805-001
U-25	Tension Spring	107606-001			107606-001
U-35	Thread Release Lever	141596-002			141596-002
U-36	Thread Release Shaft	141597-001			141597-001
U-37	Screw 5.95	151604-002			151604-002
U-38	Screw 4.76	141598-001			141598-001
U-39	Thread Release Lever Bracket	141599-002			141599-002

Ref. No.	sub-class Name of Parts	-2	-3	-4	-5
U-51	Tension Stud			145437-001	
U-52	Tension Spring			115958-001	
U-53	Needle Thread Guide Plate			110813-001	
U-54	Gimp Tension Bracket			145438-002	
U-55	Gimp Release Pin			145439-001	
U-56	Screw 4.37			151601-002	
U-57	Tension Stud			145440-001	
U-58	Pin			105423-001	
U-59	Tension Disc			145446-001	
U-60	Presser for Tension Disc			159805-001	
U-61	Tension Spring			115958-001	
U-62	Tension Control Nut			100136-001	
U-63-1	Pre-Tension Body			145724-001	
U-63-2	Pre-Tension Shaft			145725-001	
U-63-3	Thread Guide Disc			144504-001	
U-63-4	Spring			144505-000	
U-63-5	Screw			102716-003	
U-63-6	Screw 3.18 x 5			001660-513	
U-64	Gimp Stopper			145991-001	
U-65	Spring			511091-001	
U-66	Screw 2.38			122771-002	
U-67	Screw 3.18 x 4.5			009669-412	
W-9	Hinge		141496-001		141496-001
W-15	Upper Thread Trimming Lever (A)		141497-001		141497-001
W-16	Lever Driving Positioner		145998-001		145998-001
W-17	Screw 4.76		141499-001		141499-001
W-18	Spring		141500-001		141500-001
W-19	Screw 3.57 x 4		009670-412		009670-412
W-20	Pin		141501-001		141501-001
W-21	Upper Thread Trimming Lever (B)		141502-001		141502-001
W-22	Screw 4.37		107407-003		107407-003
W-23	Screw		141504-001		141504-001
W-24	Nut 4.76		110161-004		110161-004
W-25	Spring		141505-001		141505-001
W-26	Spring Hook		141506-001		141506-001
W-27	Screw 4.37 x 7		009680-712		009680-712
W-28	Stopper Plate		141507-001		141507-001
W-30	Upper Thread Trimming Detach Plate		141508-001		141508-001
W-31	Screw 4.37		107407-003		107407-003
W-32	Upper Thread Trimming Assembly		141509-001		141509-001

Ref. No.	Sub-class Name of Parts	-2	-3	-4	-5
W-33	Screw 4.76 x 8		009710-812		009710-812
W-34	Washer 4.76		025710-232		025710-232
W-35-1-1	Thread Scissor Guide		141515-001		147558-001
W-35-1-2	Thread Trimming Supporter		146000-001		
W-35-1-3	Screw 3.18		146001-001		
W-35-1-4	Screw 3.18		146002-001		
W-35-1-5	Nut 3.18		021660-102		
W-35-1-6	Spring		118352-001		
W-36	Screw 4.37 x 7		009680-712		009680-712
W-37	Upper Thread Trimming Cam		141516-001		141516-001
W-39	Spring Hook		141472-002		141472-002
W-41	Spring		141517-001		141517-001
W-61	Gimp Trimming Connector			145407-001	
W-62	Screw 5.95			118244-001	
W-63	Screw 4.37			116755-001	
W-64	Spring Hook			145411-001	
W-65	Screw 4.37 x 4.5			009689-412	
W-66	Spring			145412-001	
W-67	Spring			145413-001	
W-68	Screw 3.18 x 5			001660-512	
W-69	Gimp Trimming Set Plate			145415-001	
W-70	Stud			145416-001	
W-71	Washer			100197-002	
W-72	Stop Ring E6			048060-342	
W-73	Screw 4.37			151601-002	
W-74	Gimp Trimming Arm			145417-001	
W-75	Stud			143788-001	
W-76	Screw 6.35 x 6			014770-622	
W-77	Gimp Pulling Bracket			145418-002	
W-78	Bolt 4 x 16			018401-622	
W-79	Gimp Trimming Link			145419-001	
W-80	Stud			143788-001	
W-81	Screw 4.37			151601-002	
W-82	Lower Thread Trimming Connector			145420-001	
W-83	Gimp Pulling Plate			145421-001	
W-84	Screw 4.37			107407-003	
W-85	Gimp Trimming Bracket			145732-001	
W-86	Clamping Foot Lifter Lever			145426-002	
W-87	Bolt 7.94			145427-001	
W-88	Stopper			145428-001	

Ref. No.	sub-class Name of Parts	-2	-3	-4	-5
W-89	Screw 4.37 x 6			009680-612	
W-90	Stopper			145429-001	
W-91	Screw 4.37			116755-001	
W-92	Spring			145430-001	
W-93	Screw 4.37 x 6			009680-612	
W-94	Spring			145431-001	
W-95	Bolt 4.37 x 10			017681-012	
W-96	Thread Trimming Detach Lever			145433-001	
W-97	Bushing			145434-001	
W-98	Detach Lever Holder			145435-001	
W-99	Bolt 4 x 8			018400-822	
W-100	Gimp Trimming Detach Lever			145414-001	
W-101	Screw 4.37			100644-005	
W-102	Stopper			145436-001	
W-103	Screw 3.57 x 8			001670-812	
W-104	Spring			113897-001	
W-106	Spring Hook			107657-001	
W-108	Washer			100645-003	
W-109	Spring			113897-001	
W-110	Gimp Trimming Safely Plate			145983-001	
W-111	Washer 8			025080-132	
X-1	Lower Thread Cutter Lever		141518-002		141518-002
X-6	Bolt 7.94		115585-001		115585-001
X-7	Nut 7.94		152997-001		152997-001
X-11	Spring		141521-001		141521-001
X-21	Lower Thread Trimming Connecting Link		141527-001		141527-001
X-38	Knife Satting Plate		141537-001		147235-001
X-39	Bushing (A)		141538-001		
X-40	Bushing (B)		141539-001		
X-41	Washer		512769-001		
X-42	Screw 3.57		105451-001		
X-56-2	Throat Plate 50				147234-001
X-56-11	Throat Plate Assembly		144633-001		
X-56-14	Throat Plate Assembly	145244-001		145244-001	
X-59	Screw 4.37				105955-002
X-60	Bushing				147236-001
X-61	Washer				140025-002
X-62	Nut 4.37				102571-003
X-63	Lever Stopper				143394-001
X-64	Screw 7.94				140649-001

Ref. No.	Name of Parts	Sub-class	-2	-3	-4	-5
X-65	Nut					140650-001
X-66	Spring					140651-001
X-67	Cushion					146011-001
X-68	Washer 8					025080-132
X-69	Washer					111920-000
Z- 7	Needle Cat No. 1955-01		154483-014	154483-011	154483-014	
Z-11	Ruler		141705-001			
Z-12	Screw 4.37 x 5		009680-512			
Z-13	Ruler		147156-001			
Z-14	Screw 4.37 x 5		009680-512			
Z-15- 1	Threader				111507-000	
Z-15- 2	Threader				103896-001	
Z-16	Cutter 7/16		107204-001			
Z-16	Cutter 1/2		107200-001			
Z-16	Cutter 5/8		107205-001			
Z-16	Cutter 3/8		109837-001			
Z-16	Cutter 3/4		107207-001			
Z-16	Cutter 7/8		109838-001			
Z-16	Cutter 1		107210-001			
Z-16	Cutter 32		143780-001			
Z-16	Cutter 48					147941-001
Z-17	Change Gear Box		142745-002	Q'ty 1	142745-002	Q'ty 2
Z-18	Gear 26				141374-000	
Z-18	Gear 28				141375-000	
Z-18	Gear 30		141376-000			
Z-18	Gear 32		141377-000		141377-000	
Z-18	Gear 34			141378-000		141378-000
Z-18	Gear 36		141379-000			
Z-18	Gear 38		141380-000		141380-000	
Z-18	Gear 40		141381-000			
Z-18	Gear 42			141382-000		141382-000
Z-18	Gear 44		141383-000		141383-000	
Z-18	Gear 46		141384-000			
Z-18	Gear 48				141385-000	
Z-18	Gear 50				141386-000	
Z-19	Upper Thread Trimming Assembly		141509-001			141509-001
Z-25	Pulley 50, 60 Hz 2800		141709-001			
Z-25	Pulley 60 Hz 2800		143890-001			
Z-28	V-Belt 40		082104-090			
Z-28	V-Belt 41		082104-190			
						Q'ty 2

Ref. No.	Name of Parts	Sub-class	-2	-3	-4	-5
Z-35	Washer			116662-003		
Z-36	Washer 4.37			025680-232		
Z-50-5	Upper Clamping Foot Assembly		150765-001			
Z-50-4	Upper Clamping Foot Assembly			150769-001		
Z-50-6	Upper Clamping Foot Assembly				150771-001	
Z-52	Stop Cam				145352-001	
Z-53	Screw 4.37 x 8				009680-812	
Z-54	Cutter Cam				145353-001	
Z-55	Screw 4.37 x 10				009681-012	
Z-56	Thread Presser				145366-001	
Z-57	Gimp Fixed Knife				145367-001	
Z-58	Gimp Trimming Knife				145731-001	
Z-59	Gimp Detach Lever				145373-001	
Z-62	Zigzag Cam				145350-001	
Z-63	Gimp Stopper				145991-001	
Z-64	Spring				511091-001	
Z-65	Screw 2.38				122771-002	
Z-66	Screw 3.18 x 4.5				009669-412	
Z-68	Stop Cam Segment (Small)			142734-001		
Z-70-3	Thread Unwinder Assembly			150150-003		150150-003
Z-70-4	Thread Unwinder Assembly				150151-003	
Z-71	Gimp Guide Pipe				145380-001	
Z-81	Tape Guide (Rear)			144998-001		
Z-82	Screw 2.38			105288-002		
Z-83	Tape Guide Front (A)		144997-001			
Z-84	Screw 2.38		122771-002			
Z-85	Tape Guide (Front)			144999-001		
Z-86	Tape Guide Front (F)			144628-001		
Z-87	Screw 2.38			122771-002		
Z-88	Screw 2.38			105970-001		
Z-89	Collar				110067-001	
Z-91	Finger Guard (L)			150563-000	150567-000	

GAUGE PARTS LIST

Upper Clamping Foot

Sub-class	Name of Parts	Parts No.	
		Upper Clamping Foot Assembly	Clamping Foot
-2	Upper Clamping Foot (for 25 mm) & finger guard	150764-001	144498-001
-3	Upper Clamping Foot (for 25 mm) & finger guard	150768-001	1444630-001
-4	Upper Clamping Foot (for 25 mm) & finger guard	150770-001	145362-001
-5	Upper Clamping Foot (for 50 mm) & finger guard	150766-001	147230-001

Needle Plate

Sub-class	Name of Parts	Parts No.	
		Needle Plate Assembly	Needle Plate
-2 -4	Needle Plate Assembly 1.4	145244-001	145246-001
	Needle Plate Assembly 1.2	147312-001	147313-001
	Needle Plate Assembly 1.6	147314-001	147315-001
	Needle Plate Assembly for Small Hole (with Bushing)	151612-001	151613-001
	Needle Plate Assembly 1.2 for Flat Cutter	/	151842-001
-3	Needle Plate 1.2 Assembly	144633-001	144635-001
	Needle Plate 1.4 Assembly	144636-001	144637-001
	Needle Plate 1.6 Assembly	144638-001	144639-001
-5	Needle Plate 50	/	147234-001

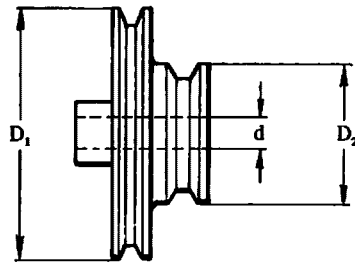
Cutter

Name of Parts		Parts No.	Name of Parts		Parts No.
Cutter	7/16 (11 mm)	107204-001	Cutter	48 (48 mm)	147941-001
Cutter	1/2 (13 mm)	107200-001	Cutter	45 (45 mm)	147987-001
Cutter	5/8 (16 mm)	107205-001	Flat Cutter	3/8 (10 mm)	151837-001
Cutter	3/8 (10 mm)	109837-001	Flat Cutter	7/16 (11 mm)	151838-001
Cutter	3/4 (19 mm)	107207-001	Flat Cutter	1/2 (13 mm)	151839-001
Cutter	7/8 (22 mm)	109838-001	Flat Cutter	5/8 (16 mm)	151840-001
Cutter	1 (25 mm)	107210-001	Flat Cutter	3/4 (19 mm)	151841-001
Cutter	50 (50 mm)	147233-0-01	Flat Cutter	7/8 (22 mm)	153340-001
			Flat Cutter	1 (25 mm)	159722-0-01

Change Gear

Number of Stitches	Change Gear L	Change Gear R	Number of Stitches	Change Gear L	Change Gear R
360	(54) 141388-000	(22) 141372-001	133	(36) 141379-000	(40) 141381-001
319	(52) 141387-000	(24) 141373-001	119	(34) 141378-000	(42) 141382-000
283	(50) 141386-000	(26) 141374-000	107	(32) 141377-000	(44) 141383-000
252	(48) 141385-000	(28) 141375-000	96	(30) 141376-000	(46) 141384-000
226	(46) 141384-000	(30) 141376-000	86	(28) 141375-000	(48) 141385-000
203	(44) 141383-000	(32) 141377-000	77 ✓	(26) 141374-000	(50) 141386-000
182	(42) 141382-000	(34) 141378-000	68 ✓	(24) 141373-001	(52) 141387-000
164	(40) 141381-000	(36) 141379-000	60	(22) 141372-001	(54) 141388-000
147	(38) 141380-000	(38) 141380-000			

MOTOR PULLEY AND BELTS



Machine Speed	Frequency	Motor Pulley		V-belt (inch)
		Pulley	Parts No.	
3200	50 Hz	$D_1 = 160$ $D_2 = 81$ $d = 14$	141707-001	082104-290 (43) 082104-390 (43)
		$D_1 = 160$ $D_2 = 81$ $d = 15.88$	145781-001	
	60 Hz	$D_1 = 134.2$ $D_2 = 69.5$ $d = 14$	141709-001	082104-190 (41) 082104-190 (41)
		$D_1 = 134.2$ $D_2 = 69.2$ $d = 15.88$	145780-001	
2800	50 Hz	$D_1 = 134.2$ $D_2 = 69.5$ $d = 14$	141709-001	082104-190 (41) 082104-190 (41)
		$D_1 = 134.2$ $D_2 = 69.2$ $d = 15.88$	145780-001	
	60 Hz	$D_1 = 119.5$ $D_2 = 69.5$ $d = 14$	143890-001	082104-090 (40) 082104-190 (41)
		$D_1 = 119.5$ $D_2 = 69.5$ $d = 15.88$	145782-001	

INDEX

Parts No.	Ref. No.	Remark	Parts No.	Ref. No.	Remark	Parts No.	Ref. No.	Remark	Parts No.	Ref. No.	Remark
001660-512	W-68		009681-012	K- 8		014770-622	D- 9		025680-232	H-10	
001660-513	U-63- 6			L- 4- 1- 9			D-55			Q-16	
001670-512	A-64			L- 4- 2- 7			E-38			U-12	
				L- 4- 2-13			E-51- 4			U-15	
	K- 7- 1- 7			U-40			G-10			Z-36	
	K- 7- 2- 7			W-38			K- 3		025710-232	W-34	
	U-34			Z-55			L-33		025900-232	L- 1- 3	
001670-612	N- 5		009681-212	A-37			L-39		028050-240	E-21	
	Q-38			A-44			L-45		028050-243	Z-70- 3- 9	
001670-614	T-125			C- 5			M- 2			Z-70- 4- 9	
001670-812	W-103			L- 4- 1- 5			M- 4		031452-203	Z-70- 3- 2	
003660-812	F- 3- 6			L- 4- 1- 7			P- 1- 2			Z-70- 4- 2	
	F- 3-12			L- 4- 2- 3			P-32			Z-70- 4-17	
005660-712	Z-92- 3			L- 4- 2- 5			Q-24		041170-204	A-39- 1- 3	
007501-003	Z-70- 4-15			X-25			S- 1- 2			A-39- 2- 3	
007671-212	J- 1-13		009681-412	A-33			S- 1- 4		047161-042	T-60	
009660-412	R- 4			P-39			S- 7- 2		047250-842	J- 1-19	
	R-17		009682-012	A-38			S- 7- 4		047301-842	P-44	
009669-312	L-54			L-60			S-11		047400-842	L-26	
009669-412	T-71		009689-412	A- 9			T-17- 1- 2		048030-342	J- 1-18	
	U-67			A-11			T-17- 2- 2			X- 4	
	Z-66			M-21			W-76		048040-342	L-42	
009670-412	W-19			W-65			X-32		048050-342	L-29	
009670-512	A-49		009710-614	A-74		017502-803	Z-70- 3- 7		048060-342	K- 7- 1- 4	
	T-24		009710-812	W-33			Z-70- 3-15			K- 7- 2- 4	
	T-44		009711-012	G-21			Z-70- 4- 7			T-129- 4	
	T-74		009711-212	Q-13			Z-70- 4-19			W-11	
	T-88		009711-412	D-41		017681-012	H- 8			W-72	
	T-108			E-48			L-62		048070-342	E-62	
	T-111			F- 3- 9			W-95			G-22	
	U-42			T-141		017751-412	P-21		048080-342	P-49	
009670-612	A-51		009751-612	X-34		017761-412	E- 4		048090-342	J- 1- 7	
	D-18		009761-012	E-34		017772-012	P-13		048100-142	E-31	
	J- 1-10			E-42		017781-412	E- 7		048110-142	D-58	
	L-21			L-27		017782-512	E-14		048150-142	C-16	
	T-34			X-10		018081-422	L-36		048200-142	F- 3-13	
	T-37		009761-212	D-34		018082-522	E-36		048250-142	C-15	
	X-49			E-17			F- 2		072600-040	J- 1- 2	
009670-812	P-46			E-54		018400-822	Q-30		072600-560	C-12	
	Q-43			L- 2			W-29		072620-260	C- 6	
	T-51			P- 7			W-99		081014-670	T-93	
	T-55			T-130		018401-222	Q-27		082104-090	Z-28	
	T-59			V- 8					082104-190	Z-28	
009680-512	S-16			W-14		018401-622	W-78			Z-28	
	Z-12			X-50		021400-102	L-15		100022-005	W- 4	
	Z-14		009761-412	A-18		021500-103	Z-70- 3-4-3			W- 7	
009680-612	A-69		009762-012	A-17			Z-70- 3-10			W-112	
	L-50			A-21			Z-70- 4-4-3		100032-004	X-57	
	T-76		013670-712	C-20			Z-70- 4-10		100075-004	E-65	
	T-78			T-41			Z-70- 4-16		100136-001	R- 1- 7	
	T-148		013679-412	V- 7- 6		021660-102	W-35- 1- 5			U- 7	
	W-89		013711-010	U-29			Z-92- 5			U-26	
	W-93		013760-612	D-30		021710-202	E-22			U-62	
009680-712	A-62			N- 7		021750-102	G- 8		100197-002	W-71	
	D-15		013760-712	A-70		021860-202	E-28		100242-003	T-81	
	P-37		013761-410	S- 5		021910-302	L- 1- 4		100250-001	B- 2	
	T-89		013771-410	S-13		025030-232	Z-92- 4		100251-001	T- 3	
	V- 7-17		013781-012	F- 4		025050-232	X-19		100257-010	T-91	
	W-27			P-27		025050-233	Z-70- 3-16		100281-001	K- 5	
	W-36		014760-622	A-53			Z-70- 4-20			W-10	
009680-812	G-12			D-50		025060-232	T-131		100366-002	K- 7- 1- 5	
	G-19			M- 8- 5		025060-332	E-16			K- 7- 2- 5	
	J- 4			T- 6			L-22- 2			Q- 4	
	L- 4- 2- 9			X-15		025080-132	W-111		100398-001	U-20	
	L- 4- 2-11		014770-622	B- 3			X-68		100399-001	U-21	
	P-16			B- 6		025100-132	E-27		100400-000	U-23	
	Q-35			B- 7			E-30		100402-004	U-27	
	U-11			B-13		025350-332	K- 7- 1- 6		100511-003	D-39	
	Z-53			C-28			K- 7- 2- 6		100644-005	A-45	
009681-012	A-34			D- 2			N-11			U-14	

Parts No.	Ref. No.	Remark	Parts No.	Ref. No.	Remark	Parts No.	Ref. No.	Remark	Parts No.	Ref. No.	Remark
100644-005	W-101		107401-001	L-47-12- 4		111920-000	X-69		126863-000	Z-70- 3-13	
100645-003	L-67			Z-50- 5- 4		111937-001	F- 5			Z-70- 4-13	
	W-108			Z-50- 6-1-4		112144-001	P-52		129986-001	A-42	
100659-001	V- 7-10		107404-001	L-47- 3- 5		112359-001	T-61		140004-001	B- 5- 1- 5	
				L-47- 6- 5		112467-002	T-133- 9			B- 5- 2- 5	
100887-001	Z- 4- 2			L-47- 8-1-8		112743-001	T-122		140025-002	X-61	
101125-000	Z-38			L-47-12- 5		112744-001	T-23		140326-001	B-18	
101572-101	Z- 3- 4			Z-50- 4- 5		112751-003	U-31		140430-001	B- 5- 1-14	
101671-002	N- 9			Z-50- 5- 5		113431-002	L-63			B- 5- 2-14	
101706-001	C-29			Z-50- 6-1-8		113897-001	W-104		140553-102	B-10	
	S- 6- 2		107407-003	A-67			W-109		140649-001	X-64	
	S-14- 2			B-15		114294-001	T-117		140650-001	X-65	
101706-003	L-46- 2			H- 2		114483-002	Z-23		140651-001	X-66	
102023-005	A-22			L- 4- 1- 3		114747-001	A-54		140947-002	L-14	
102424-004	A- 6			L- 4- 1-11		115120-001	L-69		141243-002	A- 4	
102538-002	T-32			P-50- 3		115493-002	Q-33		141244-000	A- 5	
102571-003	X-62			Q- 6			X-16		141245-002	A- 7	
102707-002	D-17			Q- 8		115503-001	P-41		141246-001	A- 8	
102716-003	U-63- 5			Q-19		115542-001	E-15		141247-001	A-10	
102843-004	C- 9			R- 9		115544-001	E-18		141248-001	A-12	
	C-14			V- 2		115545-001	E-19		141249-002	A-16	
102850-002	Q-40			W-22		115546-001	E-20		141252-000	A-23	
103896-001	Z-15- 2			W-31		115550-001	E-25		141254-000	A-24	
103950-002	U-19			W-84		115551-001	E-26		141256-001	Z-39	
103978-002	B-17		107419-002	T-83		115552-001	E-29		141257-001	A-29	
104449-001	T-96		107453-001	P-20		115558-002	E-40		141258-001	A-30	
104450-001	T-102		107550-002	L-24		115559-002	E-41		141259-002	A-31	
104564-001	T-30		107602-001	U- 3		115585-001	E-45		141262-001	A-36	
104821-001	T-99		107606-001	U-25			G- 5		141264-002	A-39- 1- 1	
104833-001	T-45		107612-001	U- 8			X- 6			A-39- 2- 1	
104847-001	X-27		107639-001	W-40		115958-001	U-52		141265-001	A-39- 1- 2	
104848-001	X-28		107640-001	Q-21			U-61		141266-002	A-43- 1	
104908-002	D-11- 2- 3		107657-001	W-106		116662-003	A-46		141267-001	A-47	
105234-003	A-13		107678-001	V- 3			Z-35		141268-002	A-48	
105288-002			107680-001	V- 4		116725-001	T-104		141269-001	A-50- 1	
	Z-82		107681-001	V- 5		116755-001	W-63		141271-001	C- 1	
105423-001	U-58		107682-001	V- 6			W-91		141272-001	C- 2	
105451-001	X-42		107744-001	X- 3		116795-000	T-116		141273-000	C- 3	
105812-002	D-47		107780-001	Z- 4- 3		116968-001	T-50- 6		141274-000	C- 4	
105812-003	D-45		108494-001	R- 1- 5		116975-001	T-73		141275-001	C- 7	
105955-002	X-59		108495-001	R- 1- 6			T-124		141276-001	C- 8	
105970-001			108520-001	T-126		117215-001	U- 6		141277-000	C-10	
	Z-88		109173-001	S-18- 5		117258-001	N-10		141278-001	C-11	
106147-002	L-12		109183-001	T-40		117348-001	C-26		141279-001	C-13	
106568-003	L-65		109203-001	T-95		117466-000	Z-10		141280-001	C-17	
106588-003	D-20		109208-001	S- 4		117598-001	T-115		141281-001	C-18	
	D-28		109837-001	Z-16		117934-001	A-72		141282-001	C-19	
	L-31- 2		109838-001	Z-16		118215-001	L-41		141283-001	C-21	
	P-10		109862-001	T-43		118244-001	W-62		141284-000	C-22	
106629-002	X-20		109893-002	P-12		118262-002	L-31- 1		141285-001	C-23	
107017-002	A-27		110067-001			118352-001	W-35- 1- 6		141286-001	C-24	
	A-41			Z-89		118682-001	B-16		141289-001	C-25	
107097-101	S-19- 2		110104-000	T-50- 2		118735-002	E- 6		141290-000	B- 1	
107126-001	P-53		110161-004	Q- 7- 3			E-13		141293-101	B- 8	
107153-001	T-15			W-24			L-66		141295-001	B-12	
107153-002	E-61			X-54		118759-001	S-14		141296-001	B-14	
107200-001	P-40		110185-002	J- 1- 5		118764-002	V- 9		141297-001	S- 2	
	Z-16		110367-001	B- 4					141298-000	S- 3	
107204-001	P-40		110641-002	T-94		118829-001	B- 5- 1- 3		141303-000	S- 8	
	Z-16		110744-002	P-18			B- 5- 2- 3		141304-001	S-10	
107205-001	P-40		110813-001	U-53		118837-001	Z- 3- 3		141305-000	S-12	
	Z-16		111073-001	X-56-11- 3		120774-001	T-119		141308-101	S-15	
107207-001	Z-16		111105-001	L-47- 8-1-7		120790-001	P-54		141309-001	D- 1	
107210-001	Z-16			Z-50- 6-1-7		122771-002			141310-001	D- 3	
107231-002	A-15		111237-001	B- 5- 1- 4					141311-000	D- 4	
107321-003	A-26			B- 5- 2- 4			U-66		141312-000	D- 6	
	A-40		111443-001	Q- 2			Z-65		141313-001	D- 8	
107372-001	A-14		111468-001	B- 5- 1- 9			Z-84		141316-001	J- 1- 4	
107401-001	L-47- 3- 4			B- 5- 2- 9			Z-87				
	L-47- 8-1-4		111507-000	Z-15- 1		122991-002	Z- 1				

Parts No.	Ref. No.	Remark	Parts No.	Ref. No.	Remark	Parts No.	Ref. No.	Remark	Parts No.	Ref. No.	Remark
			141409-001	L- 8		141504-001	Q- 7- 2		141589-001	G-20	
			141410-001	L- 9			W-23		141590-001	U- 1	
141326-001	D-11- 3		141411-001	L-10		141505-001	W-25		141592-001	U-10	
141328-001	D-14		141412-001	L-11		141506-001	W-26		141593-001	U-13	
141329-001	D-16		141413-001	L-13		141507-001	W-28		141594-001	U-32	
141332-001	D-19		141417-001	L-18		141508-001	W-30		141596-002	U-35	
141333-001	D-21			P-26		141509-001	W-32		141597-001	U-36	
141334-001	D-22		141419-001	L-22- 1			Z-19		141598-001	U-38	
	D-52		141420-001	L-23		141511-000	Z-19- 2		141599-002	U-39	
	E-43		141421-002	L-25		141511-001	W-32- 2		141600-001	V- 1	
	E-64		141422-001	L-26- 1		141512-001	W-32- 3		141601-002	V- 7	
141335-000	D-23		141426-001	L-32			Z-19- 3		141602-002	V- 7- 1	
141336-001	D-24		141427-002	L-34- 1		141513-001	W-32- 4		141603-002	V- 7- 2	
141337-001	D-25		141429-001	L-37			Z-19- 4		141604-001	V- 7- 3	
141338-001	D-26		141430-002	L-38		141514-001	W-32- 5		141605-001	V- 7- 5	
141339-001	D-27		141431-001	L-40			Z-19- 5		141606-001	V- 7- 7	
141340-001	D-29		141433-002	L-43- 1		141515-001	W-35- 1- 1		141607-001	V- 7- 8	
141341-001	D-31		141434-001	L-44- 1		141516-001	W-37		141608-001	V- 7-11	
141342-000	D-32		141439-001	L-48		141517-001	W-41		141609-002	V- 7-13	
141344-001	D-35		141440-001	L-49- 1		141518-002	X- 1		141610-001	V- 7-14	
141345-001	D-36		141441-001	L-51		141519-001	X- 5		141611-001	V- 7-15	
141346-001	D-38		141442-001	L-53		141520-001	X- 8		141614-001	N- 1	
141347-001	D-40		141445-001	L- 4- 1- 6		141521-001	X-11		141616-001	N- 3	
141348-001	D-42		141446-001	L- 4- 1- 8		141522-001	X-13		141617-001	N- 4	
141351-001	D-54		141448-001	L- 4- 1-10		141523-001	X-17		141618-001	E- 8	
141354-000	D-43		141449-001	K- 1		141526-001	X-18		141619-001	N- 6	
141355-001	D-44		141450-001	K- 2		141527-001	X-21		141620-001	N- 8	
141356-001	D-46		141451-001	K- 4		141528-001	X-22		141621-001	J- 1	
141357-000	D-49		141454-001	K- 6		141529-000	X-24		141622-000	J- 1- 1	
141358-001	D-51		141455-001	K- 7- 1		141530-001	X-26		141623-001	J- 1- 6	
141359-001	D-53		141462-001	P- 4		141531-001	X-30		141624-001	J- 1- 8	
141363-001	D-57		141463-001	P- 5		141532-001	X-31		141625-001	J- 1- 9	
141365-000	D-61			W-12		141533-001	X-33		141627-001	J- 1-12	
141366-001	D-62		141464-001	P- 8		141534-001	X-35		141628-001	J- 1-14	
141367-001	M- 1		141465-001	P- 9		141535-001	X-36		141629-001	J- 1-15	
141368-000	M- 3		141466-001	P-11		141537-001	X-38- 1		141630-001	J- 1-16	
141369-001	M- 5		141467-001	P-14		141538-001	X-39		141631-001	J- 1-17	
141374-000	M- 7		141468-001	P-15		141539-001	X-40		141632-001	J- 2	
	Z-18		141469-001	P-17		141541-001	X-44		141633-001	J- 3	
141375-000	Z-18		141471-001	P-22			Z-21		141636-000	T- 1	
141376-000	Z-18		141472-002	G-14		141542-001	X-45		141637-000	T- 2	
141377-000	M- 7			P-23		141543-001	X-46		141642-000	T-133- 2	
	Z-18			W-39			Z-20		141643-000	T-133- 3	
141378-000	M- 7			X-12		141544-001	X-47		141647-000	T-21	
	Z-18		141473-002	P-24		141545-001	X-48		141651-001	T-28	
141379-000	Z-18		141474-001	P-31		141547-001	E- 3- 1		141652-001	T-29	
141380-000	Z-18		141475-001	P-33		141548-001	E- 5		141653-001	T-31	
141381-000	Z-18		141476-001	P-34		141549-001	E- 9		141654-001	T-33	
141382-000	M- 7		141478-001	P-36		141550-001	E-10		141655-000	T-35	
	Z-18		141479-001	P-38		141553-001	E-12		141656-001	T-36	
141383-000	M- 7		141480-001	P-50- 2		141554-001	E-23		141659-001	D-56	
	Z-18		141481-001	P-29		141555-001	E-32		141661-001	T-50	
141384-000	Z-18		141484-001	P-42		141556-101	E-33		141663-001	T-50- 3	
141385-000	Z-18		141485-001	P-43		141557-002	E-35		141664-001	T-50- 4	
141386-000	M- 7		141486-001	P-45		141558-001	E-37		141665-001	T-50- 5	
	Z-18		141487-001	P-47		141559-001	E-39		141666-001	T-50- 7	
141389-001	M- 8		141488-001	P-48		141562-001	E-50		141667-001	T-50- 8	
141392-001	M- 8- 3		141489-001	W- 1		141564-001	E-53		141668-001	T-50- 9	
141393-001	M- 8- 4		141490-001	W- 2		141566-001	F- 3		141669-000	T-50-10	
141394-001	M- 9		141491-001	W- 3		141574-001	G- 1		141670-000	T-53	
141395-002	M-10- 1		141492-001	W- 5		141575-001	G- 2		141671-001	T-54	
141396-001	M-11			W-113		141576-001	G- 7		141672-000	T-56	
141397-001	M-12		141494-001	W- 6		141579-001	G- 9		141674-001	T-58- 2	
141398-001	M-13			W-114		141580-001	G-11		141679-001	T-66	
141399-001	M-14		141496-001	W- 9		141581-001	G-13		141680-001	T-68	
141400-001	L- 6		141497-001	W-15		141582-001	G-15		141681-000	T-69	
	M-16		141499-001	W-17		141583-001	G-16		141682-001	T-70	
141401-001	L- 1		141500-001	W-18		141584-001	G-17		141683-000	T-72	
141404-000	L- 3		141501-001	W-20		141586-001	G-17- 2		141685-001	T-75	
141408-001	L- 7		141502-001	W-21		141588-001	G-18		141686-001	T-77	

Parts No.	Ref. No.	Remark	Parts No.	Ref. No.	Remark	Parts No.	Ref. No.	Remark	Parts No.	Ref. No.	Remark
141687-000	T-79		142743-000	A- 2		144633-001	X-56-11		145395-001	Q-25	
141688-001	T-80		142744-001	S-18- 4		144634-001	X-56-11- 1		145397-001	Q-28	
141689-001	T-82		142745-002	Z-17		144635-001	X-56-11- 2		145398-101	Q-29	
141692-001	T-86					144707-001	L-47- 6- 4		145399-001	Q-31	
141696-001	T-92		142748-001	T-25			Z-50- 4- 4		145400-001	Q-32	
141697-000	T-105		142748-002	T-145		144741-001	U-18		145401-001	Q-34	
	T-149		142750-001	T-22		144876-001	T-133- 8		145402-002	Q-36	
141698-001	H- 1		142750-002	T-144		144946-000	A-19		145403-001	Q-37	
141699-001	H- 3		142751-001	C-30		144997-001			145404-001	Q-39	
141700-001	H- 4		142755-001	E-56			Z-83		145405-001	Q-41	
141701-001	H- 5		142766-001	T- 5		144998-001			145406-001	Q-42	
141702-001	H- 6		142771-001	E-63			Z-81		145407-001	W-61	
141703-001	H- 7		142779-001	P-51		144999-001			145411-001	W-64	
141704-001	H- 9		142990-001	Z-70- 3-14-4			Z-85		145412-001	W-66	
141705-001	Z-11			Z-70- 4-18-4		145244-001	X-56-14		145413-001	W-67	
141709-001	Z-25		143394-001	X-63		145247-001	X-56-14- 3		145414-001	W-100	
141711-000	Z-27		143445-001	A-63		145248-001	L-61- 1		145415-001	W-69	
141714-001	M- 6		143713-001	T-120		145277-104	Z-22		145416-001	W-70	
141716-000	D-60		143714-001	T-121		145339-002	A-43- 2		145417-001	W-74	
141717-001	P- 2		143715-001	T-121- 1		145342-001	A-71		145418-002	W-77	
141718-001	A-52		143716-001	T-121- 2		145343-001	A-25- 2		145419-001	W-79	
141953-001	E-58		143738-002	L-59		145344-001	D-59		145420-001	W-82	
142005-000	Z-34		143739-002	L-16- 1		145345-001	A-50- 2		145421-001	W-83	
142214-001	E-59		143740-001	L-20- 2		145348-001	L- 4- 2- 2		145426-002	W-86	
142258-001	U-41		143741-001	A-66		145350-001	L- 4- 2- 6		145427-001	W-87	
142259-001	V- 7- 4		143742-001	A-65			Z-62		145428-001	W-88	
142268-001	T-107		143743-001	L-64- 1		145351-001	L- 4- 2- 8		145429-001	W-90	
142269-000	A-28		143748-001	R- 3		145352-001	L- 4- 2-10		145430-001	W-92	
142272-001	M-18		143749-001	R- 2			Z-52		145431-001	W-94	
142273-001	M-19		143780-001	Z-16		145353-001	L- 4- 2-12		145433-001	W-96	
142297-001	C-27		143788-001	W-75			Z-54		145434-001	W-97	
142298-000	T-110			W-80		145354-002	L-34- 2		145435-001	W-98	
142312-001	A-61			X-14		145355-001	L-44- 2		145436-001	W-102	
142342-000	J- 1- 3		143793-001	S-18- 3		145356-002	L-43- 2		145437-001	U-51	
142351-001	T-26		143890-001	Z-25		145357-001	L-61- 3		145438-002	U-54	
142352-001	T-38		143911-001	A-68		145358-001	L-64- 2		145439-001	U-55	
142353-001	T-47		143914-001	J- 1-20		145359-001	L-20- 3		145440-001	U-57	
142354-001	T-62		143916-001	T-17- 1		145362-001	L-47- 8- 1-1		145441-001	R-16	
142355-001	T-64		143917-001	J- 1-11		145365-001	L-47- 8- 1-5		145442-001	E- 3- 2	
142359-001	T-20		143927-001	P-28			Z-50- 6- 1-5		145445-001	L-26- 2	
	T-49		143933-001	S-18		145366-001	L-47- 8- 1-6		145446-001	U- 4	
	T-52		143942-001	L- 4- 1			Z-50- 6- 1-6			U-22	
	T-57		143943-001	L- 4- 1- 2			Z-56			U-59	
142372-000	E-66- 2		143944-001	L- 4- 1- 4		145367-001	L-47- 8- 2		145465-001	B- 5- 1- 2	
	L-17		143945-001	P-19			Z-50- 6- 2			B- 5- 2- 2	
	X- 2		143949-001	Z- 4- 4			Z-57			T-133- 6	
142373-000			143980-001	R- 1- 4		145369-001	L-47- 8- 4		145673-001	U- 9	
	E-66- 3		143982-001	T- 4			Z-50- 6- 4		145692-001	Q-14	
	G- 4		143983-001	T-18		145370-001	L-47- 8- 5		145719-101	B- 5- 2	
	X-52		143984-002	A-20			Z-50- 6- 5		145723-001	U-63	
142374-000	L-35		143985-001	A-25- 1		145371-001	L-47- 8- 7		145724-001	U-63- 1	
142375-000	L- 5		143986-101	S-19			Z-50- 6- 7		145725-001	U-63- 2	
142376-000	P-25		144496-001	L-47- 3- 3		145373-001	L-47- 8- 6		145731-001	L-47- 8- 3	
142407-001	T-42			L-47- 6- 3			Z-50- 6- 6			Z-50- 6- 3	
142408-001	T-112			L-47- 8- 1-3			Z-59			Z-58	
142413-001	T-58			L-47-12- 3					145732-001	W-85	
142416-001	X-43			Z-50- 4- 3		145375-001	Z-50- 6- 1-1		145931-001	G-23	
142419-001	X-51			Z-50- 5- 3		145377-001	K- 7- 2		145961-001	U-16	
142420-001	X-53			Z- 50- 6-1-3		145380-001	Q- 1		145983-001	W-110	
142443-001	Z- 3- 1		144498-001	L-47- 3- 1			Z-71		145991-001	U-64	
142582-001	T-113		144504-001	U-63- 3		145381-001	Q- 3			Z-63	
142702-002	M-17		144505-000	U-63- 4		145382-001	Q- 5		145998-001	W-16	
				V-12		145383-101	Q- 7		145999-001	W-35- 1	
142721-001	Z- 6		144541-001	L-55		145384-001	Q- 9		146000-001	W-35- 1- 2	
142724-001	P-50		144575-001	Z-50- 5- 1		145385-001	Q-10		146001-001	W-35- 1- 3	
142733-001	U-28		144627-001	L-61- 2		145386-001	Q-11		146002-001	W-35- 1- 4	
142734-001	Z-68		144628-001			145387-001	Q-12		146011-001	X-67	
142735-001	U-30			Z-86		145388-001	Q-15		146025-001	S-20	
142736-001	B-11		144630-001	L-47- 6- 1		145392-001	Q-18			Z- 9	
142742-000	T-118		144632-001	Z-50- 4- 1		145394-001	Q-23		146034-001	L-47- 8- 1-9	

Parts No.	Ref. No.	Remark	Parts No.	Ref. No.	Remark	Parts No.	Ref. No.	Remark	Parts No.	Ref. No.	Remark
146034-001	Z-50- 6- 1-9		150176-001	Z-70- 4-18-1		156879-001	K- 7- 1- 2				
146041-002	E-11		150178-001	Z-70- 3- 6		156880-001	K- 7- 2- 2				
146075-001	B- 8- 2			Z-70- 3-14-1		158437-001	T-151				
146130-001	L- 4- 2-14		150179-001	Z-70- 3- 8		158449-001	D-48				
146198-001	V-10			Z-70- 4- 8		159805-001	U- 5				
146199-001	V-11		150180-000	Z-70- 3-11			U-24				
146200-001	V-13			Z-70- 4-11			U-60				
146209-001	T-127		150181-101	Z-70- 3- 1-2		180515-001	T-17- 2				
146254-001	Z-37			Z-70- 4- 1-2		181092-001	S- 1				
146316-001	Q-17		150182-000	Z-70- 3-12		181093-101	S- 7				
146336-001	L- 4- 2			Z-70- 4-12		181250-001	P- 1				
146338-001	L- 4- 2- 4					181708-001	E-66				
146355-001	S- 9					181969-003	L-46				
146951-001	Q-20		143971-001	Z-92		181994-001	D-10				
146955-004	E-44		150184-001	Z-70- 3-14-5		181995-001	S- 6				
147155-000	D-64			Z-70- 4-18-5		183120-000	T-150				
147156-001	Z-13		150188-001	Z-70- 4-14		403388-002	D-37				
147203-001	A-39- 2- 2		150189-001	Z-70- 3- 1-1		507142-002	V- 7-12				
147222-002	F- 1			Z-70- 4- 1-1		511091-001	U-65				
147223-001	T-129		150192-003	Z-70- 3-14			Z-64				
147226-001	T-128		150193-003	Z-70- 4-18		512769-001	X-41				
147228-002	L-43- 3		150202-001	Z-70- 3- 4-2							
147229-002	L-16- 2			Z-70- 4- 4-2		145245-001	X-56-14-1				
147230-001	L-47-12- 1		150396-001	T-50-11		145246-001	X-56-14-2				
147232-001	L-49- 2		150553-003	P-35		150566-000	L-70- 6				
147234-001	X-56- 2			U- 2							
147235-001	X-38- 2		150556-001	M-15							
147236-001	X-60			X-23							
147317-001	M-20		150562-000	L-70- 2							
147558-001	W-35- 2		150563-000	Z-91- 2							
147559-002	M-10- 2		150564-000	L-70- 4							
147565-001	W- 8		150567-000	Z-91- 4							
147639-001	E-24		150764-001	L-47- 3							
147650-101	B- 5- 1		150765-001	Z-50- 5							
147758-001	Q- 7- 1		150766-001	L-47-12							
			150768-001	L-47- 6							
147901-001	D-11		150769-001	Z-50- 4							
147939-001	L-26- 3		150770-001	L-47- 8							
147941-001	P-40		150771-001	Z-50- 6							
	Z-16		150568-002	A-32							
147945-001	L-28		151018-001	Q-26							
147985-001	S-18- 6		151074-001	T-90							
148052-001	B- 8- 1- 1		151583-002	L-34- 3							
148053-001	B- 8- 1- 2		151601-002	L-52							
148054-001	S-21			U-56							
148058-001	U-33- 5			V- 7-16							
148469-001	T-133- 4			W-73							
148470-001	T-133- 5			W-81							
148471-001	T-133- 7		151602-002	T-114							
148472-001	T-143			U-17							
148745-000	T-146		151604-001	D-10- 2							
148746-001	T-147		151604-002	E-60							
148761-001	T-133			U-37							
148831-001	U-33		151605-002	L-19							
149095-001	D-33			X-29							
	P- 6			Z-26							
	W-13		152997-001	E-46							
	X- 9			G- 6							
149247-001	Z-33			X- 7							
150106-001	Z-70- 3- 4		152998-001	P-30							
	Z-70- 4- 4		154473-001	A-35- 1							
150139-001	Z-70- 3- 1		154474-001	A-35- 2							
	Z-70- 4- 1		154483-011	B- 9							
150150-003	Z-70- 3			Z- 7							
150151-003	Z-70- 4		154483-014	B- 9							
150172-001	Z-70- 3- 3			Z- 7							
	Z-70- 4- 3		154485-001	A-39- 1							
150173-001	Z-70- 3- 4-1		154486-001	A-39- 2							
	Z-70- 4- 4-1		154499-001	E-51							
150176-001	Z-70- 4- 6		154500-001	R- 1							

SINGER

From the library of: Diamond Needle Corp

A TRADE MARK OF THE SINGER COMPANY

371U
195819-402
July, 1983
Printed in Japan